

PUBLIC LAND SURVEY MONUMENT RECORD

TYPE OF MONUMENT: HARRISON
 ADAMS COUNTY COORDINATES, NAD 83 (1905)

N. 282241.449

E. 522913.147

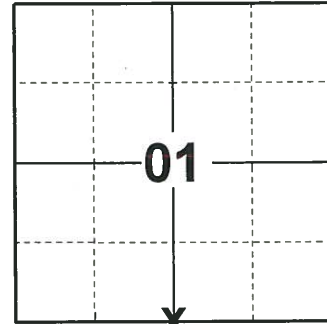
ELEVATION- - - - DATUM - - - -

FIELD WORK DATE: 09/30/2019

BASIS FOR MONUMENT LOCATION

1980 - PLS 1478 SET EQUIDISTANT AND ON LINE BETWEEN ADJACENT SECTION CORNERS. A.B.K. EXCAVATED WITH BACKHOE AND FOUND NO EVIDENCE OF ANY PREVIOUS MONUMENTATION. NO RECORD OF ANY MONUMENTATION SUBSEQUENT TO THE ORIGINAL WAS FOUND.

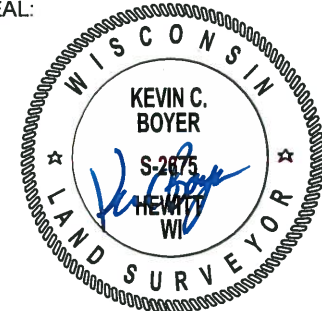
2019 - PLS 2675 FOUND HARRISON MONUMENT 1'± BELOW THE ROAD SURFACE AND DID NOT RECOVER ANY EXISTING WITNESSES OR TIES. THE MONUMENT IS ONLINE AND EQUIDISTANT BETWEEN ADJACENT CORNERS. ACCEPTED THE HARRISON MONUMENT AS THE CORNER LOCATION AND SET 4 NEW TIES.



LOCATION

(INDICATE CORNER BY "X")

SEAL:



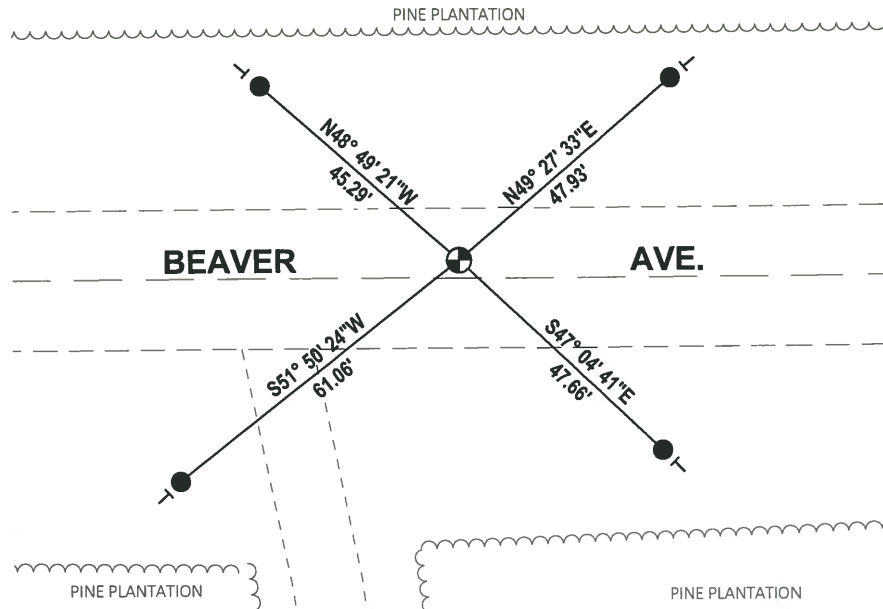
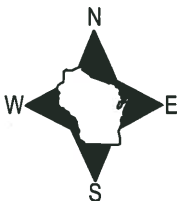
DATA SHOWN HERE ON THIS TIE SHEET IS CORRECT AND COMPLETE TO THE BEST OF MY KNOWLEDGE AND BELIEF.

PROFESSIONAL LAND SURVEYOR

DATE 11/25/19

- TIE SKETCH

NOTE: THE MONUMENT FALLS 3'± NORTH OF BEAVER AVE. CENTERLINE.



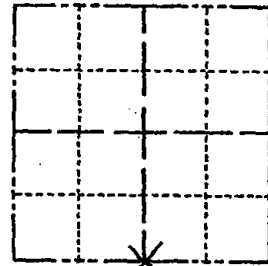
- SET 3/4" x 18" IRON REBAR, 1.50#/FT
- ⊕ FOUND HARRISON MONUMENT
- VINYL "T" POST

Government Land Corner Certificate

Adams County
 TYPE OF MONUMENT: HARRISON STANDARD *Point RR Spike*
 STATE PLANE COORDINATES: N _____ E _____
 ELEVATION — M.S.L. DATUM: _____
 THETA ANGLE: _____
 FIELD BOOK: 83 PAGE 37
 DRAWN BY: R. NUBER

CORNER NO. 32
 SECTION 1
 TOWN 19
 RANGE 5

SET MAR. 4/22/80
 KH-SS



LOCATION (Indicated by 'X')

SEAL:



DATA SHOWN HERE ON CERTIFIED CORRECT:

Gregory P. Rhinehart
Registered Land Surveyor

DATE: 1/8/80

BASIS FOR MONUMENT LOCATION

Show info such as: History of corner, with reference to Vol. and pg., dates, surveyor; exact description of monument replaced; if location computed, by taped or EDM traverse; landowner remarks, etc. (Use reverse side if necessary)

Set equidistant and on line between adjacent section corners. ABK excavated with backhoe and found no evidence of any previous monumentation. No record of any monumentation subsequent to the original was found.

- OK 4-17-84 DK-SS
- OK 1 MARCH 94 CR-XG
- OK, 2-12-98 - JG
- OK, 12-31-02 - JG
- 1 NEW TIE 2-11-09 SS

TIE SKETCH

Show at least four ties, also fence lines, roads, topo, size and type of witness trees and if off road - best way to arrive at corner.

Steel Fence Post +

