

PUBLIC LAND SURVEY MONUMENT RECORD

TYPE OF MONUMENT: HARRISON
 ADAMS COUNTY COORDINATES, NAD 83 (1905)

N. 279593.437
 E. 504347.151

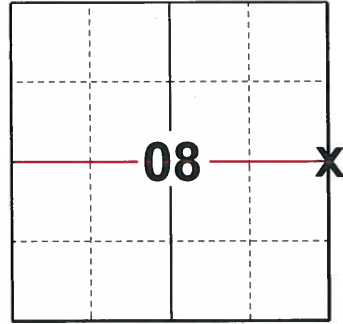
ELEVATION- - - - DATUM - - - -

FIELD WORK DATE: 10/14/2019

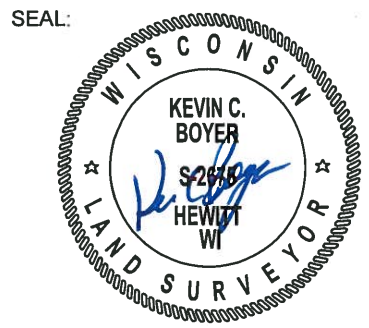
BASIS FOR MONUMENT LOCATION

1974 - PLS 1103 RAN TRAVERSE WITH EDM/TRANSIT AROUND SECTION 8. COULD NOT FIND NO EVIDENCE OF THE ORIGINAL EAST QUARTER CORNER OR ANY REMONUMENTATION. DID NOT USE THE "UNRECORDED PLAT" BY BALWEBER IMMEDIATELY TO THE EAST BECAUSE PLAT WAS TOTALLY INADEQUATE WITH RESPECT TO RETRACEABLE AND SECTION SUBDIVISION. SET QUARTER CORNER EQUIDISTANT AND ON LINE BETWEEN NORTHEAST AND SOUTHEAST SECTION CORNERS.

2019 - PLS 2675 FOUND HARRISON 12"± BELOW THE ROAD SURFACE AND 2 WITNESSES. THE MONUMENT AGREES WITH BOTH WITNESSES. ACCEPTED THE HARRISON MONUMENT AS THE CORNER LOCATION. SET 3 NEW TIES AND MEASURED TO A FOUND PROPERTY IRON AND THE EXISTING WITNESSES.



LOCATION
 (INDICATE CORNER BY "X")



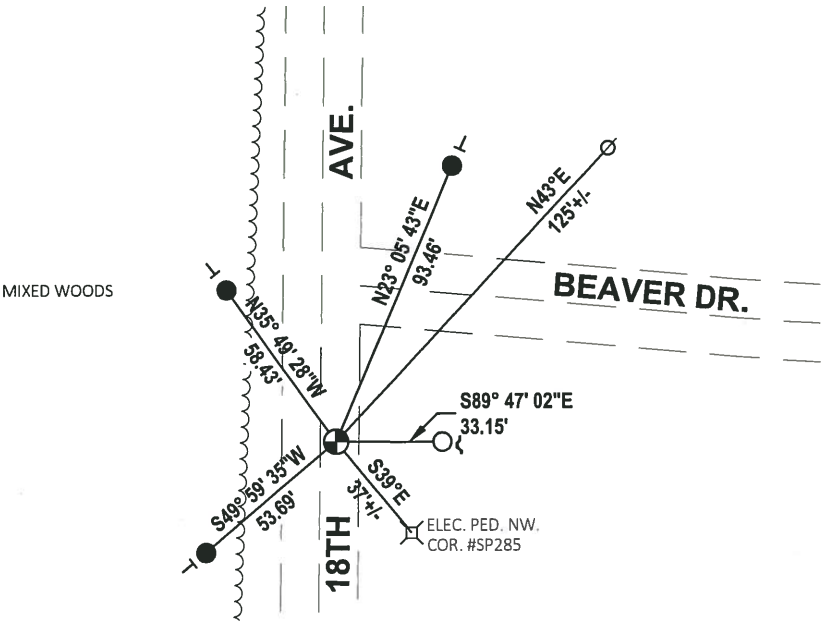
DATA SHOWN HERE ON THIS TIE SHEET IS CORRECT AND COMPLETE TO THE BEST OF MY KNOWLEDGE AND BELIEF.

PROFESSIONAL LAND SURVEYOR

DATE 11/25/19

- TIE SKETCH

NOTE: THE MONUMENT FALLS 4.8"± EAST OF 18TH AVE. CENTERLINE.



- SET 3/4" x 18" IRON REBAR, 1.50#/FT
- FOUND 3/4" IRON ROD
- ⊙ FOUND HARRISON MONUMENT
- ⊘ WITNESS POWER POLE
- ⌒ STEEL FENCE POST
- ⊥ VINYL "T" POST

ADAMS COUNTY

Survey Monument Record

TYPE OF MONUMENT: 30" Harrison Standard

STATE PLANE COORDINATES: N _____

E _____

ELEVATION — M.S.L. DATUM: _____

THETA ANGLE: _____

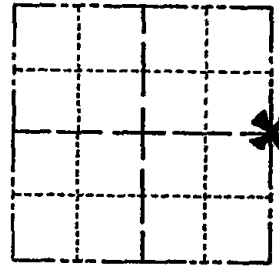
FIELD BOOK: _____ PAGE _____

CORNER NO. 638

SECTION 8

TOWN 19

RANGE 5



LOCATION (Indicated by 'X')

SEAL:

BASIS FOR MONUMENT LOCATION

(Use reverse side if necessary)

Show info such as: History of corner, with reference to Vol. and pg, dates, surveyor; exact description of monument replaced; if location computed, by taped or EDM traverse; landowner remarks, etc.



Ran Traverse with EDM/transit around Section 8. Could find no evidence of the original East Quarter corner or any remonumentation. Did not use the "Unrecorded Plat" by Balweber immediagely to the East because plat was totaly inadequate with respect to retracability and section subdivision.

Set Quarter Corner equidistant and on line between Northeast and Southeast Section corners.

Ok 4-12-84 DK-SS

- OK 2-25-94 CR-JG
- OK 3-14-79 RN-SS
- " 12-28-88 SS

- OK 1-25-99-JG
- 5-GONE, 4-NEW, 1-15-04 JG-JS
- OK 1-26-09 SS-MS

CERTIFIED CORRECT:

Dale C. Hagen
Registered Land Surveyor

DATE: December 24, 1974

TIE SKETCH

(Show at least four ties)

Note

Ties in trees to nail in disc.

