

## PUBLIC LAND SURVEY MONUMENT RECORD

TYPE OF MONUMENT: HARRISON  
 ADAMS COUNTY COORDINATES, NAD 83 (1905)

N. 276945.351

E. 501622.992

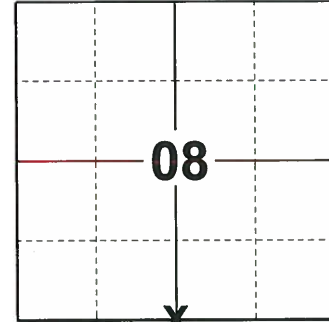
ELEVATION- - - - - DATUM - - - - -

FIELD WORK DATE: 10/14/2019

### BASIS FOR MONUMENT LOCATION

1974 - PLS 1103 RAN EDM/TRANSIT TRAVERSE AROUND SECTION 8 TO DETERMINE SEARCH AREA FOR INVESTIGATION. EXCAVATION WITH BACKHOE YIELDED NO EVIDENCE OF THE ORIGINAL CORNER OR ANY REMONUMENTATION. SET SOUTH QUARTER CORNER EQUIDISTANT AND ON LINE BETWEEN SOUTHEAST AND SOUTHWEST SECTION CORNERS.

2019 - PLS 2675 FOUND HARRISON MONUMENT 12"± BELOW THE ROAD SURFACE AND DID NOT RECOVER ANY TIES OR WITNESSES ON CURRENT TIE SHEET (UPDATED 1-26-2009). THE MONUMENT IS ONLINE AND EQUIDISTANT BETWEEN ADJACENT CORNERS. ACCEPTED THE HARRISON MONUMENT AS THE CORNER LOCATION. SET 4 NEW TIES AND MEASURED TO A UNKNOWN WITNESS TREE.



**LOCATION**

(INDICATE CORNER BY "X")

SEAL:



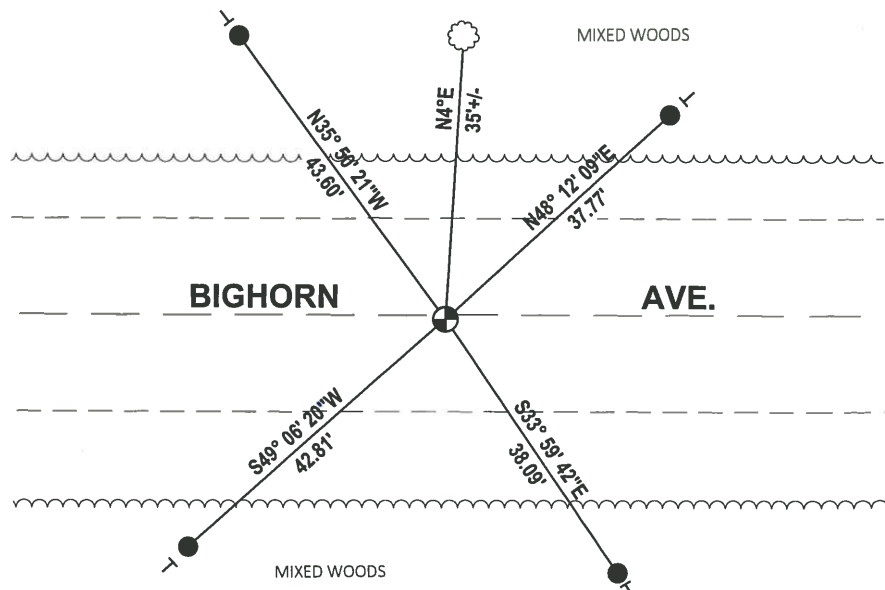
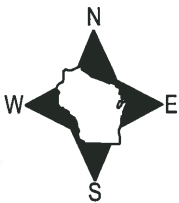
DATA SHOWN HERE ON THIS TIE SHEET IS CORRECT AND COMPLETE TO THE BEST OF MY KNOWLEDGE AND BELIEF.

PROFESSIONAL LAND SURVEYOR

DATE 11/25/19

### - TIE SKETCH

NOTE: THE CORNER FALLS 6"± SOUTH OF BIGHORN AVE. CENTERLINE.



- SET 3/4" x 18" IRON REBAR, 1.50#/FT
- ⊕ FOUND HARRISON MONUMENT
- ┆ VINYL "T" POST
- ⊙ WITNESS TREE

ADAMS COUNTY

Survey Monument Record

TYPE OF MONUMENT: 30" Harrison Standard

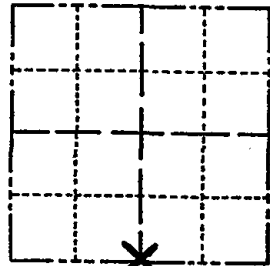
STATE PLANE COORDINATES: N \_\_\_\_\_  
E \_\_\_\_\_

ELEVATION — M.S.L. DATUM: \_\_\_\_\_

THETA ANGLE: \_\_\_\_\_

FIELD BOOK: \_\_\_\_\_ PAGE \_\_\_\_\_

CORNER NO. 636 <sup>(44)</sup>  
SECTION 8  
TOWN 19  
RANGE 5



LOCATION  
(Indicated by 'X')

SEAL:



BASIS FOR MONUMENT LOCATION

(Use reverse side if necessary)

Show info such as: History of corner, with reference to Vol. and pg, dates, surveyor; exact description of monument replaced; if location computed, by taped or EDM traverse; landowner remarks, etc.

Ran EDM/transit traverse around Section 8 to determine search area for investigation. Excavation with back-hoe yielded no evidence of the original corner or any remonumentation.

Set South Quarter corner equidistant and on line between Southeast and Southwest section corners.

- OK 2-25-94 CR-JG
- OK 3-14-79 RN-SS
- Ok 3-21-84 SS
- " 11-29-88 SS
- 2-GONE, 2-NEW, 2-8-99 JG-SS
- OK, 1-5-04-JG

CERTIFIED CORRECT:

Dale C. Hagen  
Registered Land Surveyor

DATE: December 24, 1974

TIE SKETCH

(Show at least four ties)

OK 1-26-09 SS-MS

NOTE

Ties in trees to nail in disc.

