

PUBLIC LAND SURVEY MONUMENT RECORD

TYPE OF MONUMENT: HARRISON (BROKEN-TOP)
 ADAMS COUNTY COORDINATES, NAD 83 (1905)

N. 276957.748
 E. 522867.415

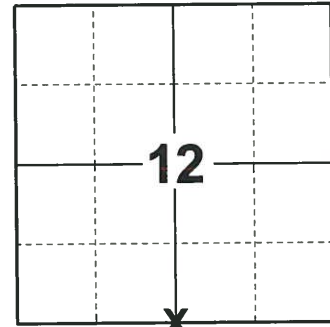
ELEVATION- _____ DATUM _____

FIELD WORK DATE: 10/08/2019

BASIS FOR MONUMENT LOCATION

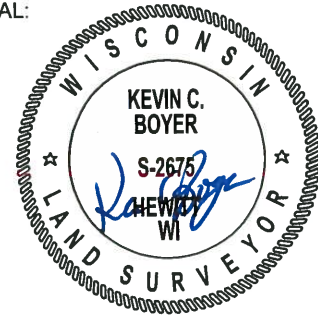
1975 - PLS RAN EDM/TRANSIT TRAVERSE AROUND SECTION 13 TO DETERMINE THE SEARCH AREAS FOR INVESTIGATION. EXCAVATION WITH BACKHOE BY A.B. KIEDROWSKI, COUNTY SURVEYOR, YIELDED NO EVIDENCE OF THE ORIGINAL CORNER OR ANY REMONUMENTATION. SET CORNER EQUIDISTANT AND ON LINE BETWEEN ADJACENT SECTION CORNERS.

2019 - PLS 2675 FOUND HARRISON (BROKEN-TOP) MONUMENT 8"± BELOW THE GROUND AND 3 WITNESSES. THE 3 WITNESSES DO NOT MATCH TIE SHEET UPDATED 12-31-02. CORNER WAS VERIFIED TO BE ON A NEAR STRAIGHT LINE AND EQUIDISTANT BETWEEN THE SW AND SE CORNER OF SECTION 12. ACCEPTED THE HARRISON (BROKEN-TOP) MONUMENT AS THE CORNER LOCATION. SET 3 NEW TIES AND MEASURED TO A FOUND PROPERTY IRON AND 3 WITNESSES.



LOCATION
 (INDICATE CORNER BY "X")

SEAL:



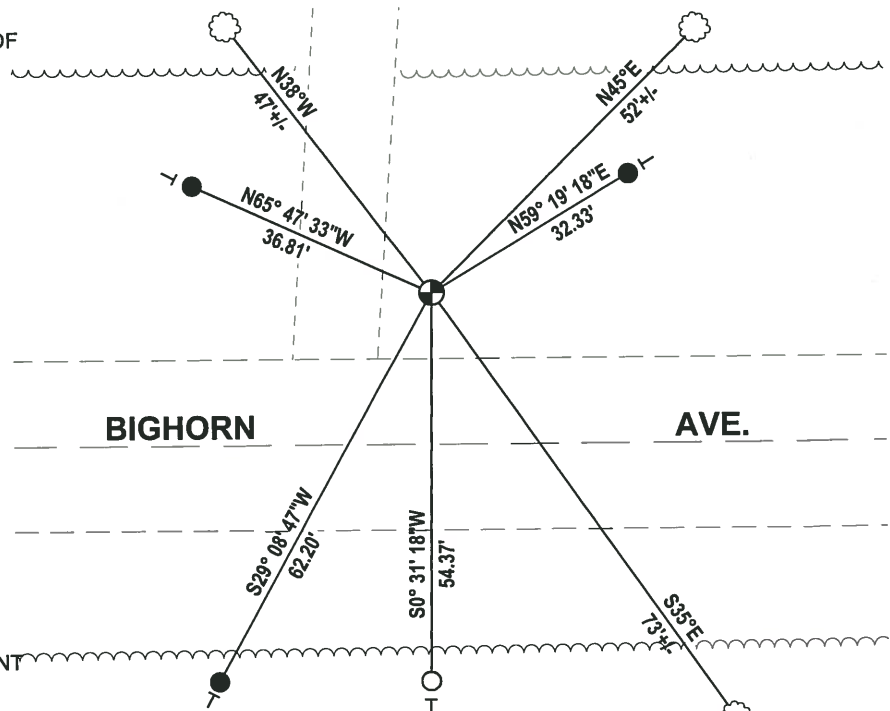
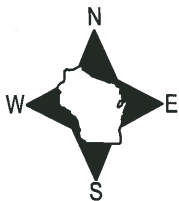
DATA SHOWN HERE ON THIS TIE SHEET IS CORRECT AND COMPLETE TO THE BEST OF MY KNOWLEDGE AND BELIEF.

PROFESSIONAL LAND SURVEYOR

DATE 11/25/19

TIE SKETCH

NOTE: THE CORNER FALLS 33.2'± NORTH OF BIGHORN AVE. CENTERLINE.



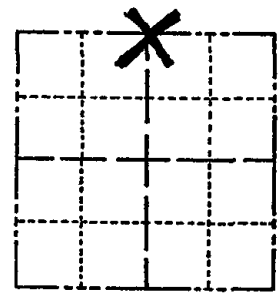
- SET 3/4" x 18" IRON REBAR, 1.50#/FT
- FOUND 3/4" IRON ROD
- ⊕ FOUND HARRISON (BROKEN-TOP) MONUMENT
- ┊ VINYL "T" POST
- ☁ WITNESS TREE

ADAMS COUNTY

Survey Monument Record

TYPE OF MONUMENT: Standard Harrison
 STATE PLANE COORDINATES: N _____
 E _____
 ELEVATION — M.S.L. DATUM: _____
 THETA ANGLE: _____
 FIELD BOOK: _____ PAGE _____

CORNER NO. 945
 SECTION 13
 TOWN 19
 RANGE 5



LOCATION
(Indicated by 'X')

BASIS FOR MONUMENT LOCATION

(Use reverse side if necessary)

Show info such as: History of corner, with reference to Vol. and pg, dates, surveyor; exact description of monument replaced; if location computed, by taped or EDM traverse; landowner remarks, etc.

Ran EDM/transit traverse around Section 13 to determine the search areas for investigation.

Excavation with backhoe by A.B.Kiedrowksi, County Surveyor, yielded no evidence of the original corner or any remonumentation.

Set corner equidistant and on line between adjacent section corners.

Three ties were replaced on 4-13-84.
 For new sketch see reverse of this sheet

SEAL:



CERTIFIED CORRECT:

Dale C. Hagen
 Registered Land Surveyor

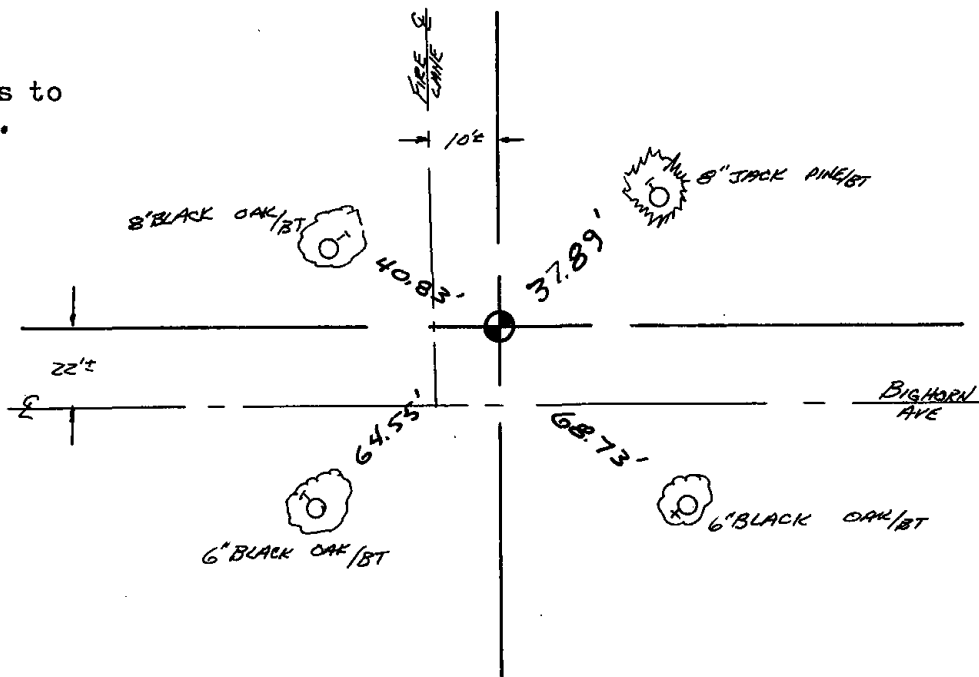
DATE: December 2, 1975

TIE SKETCH

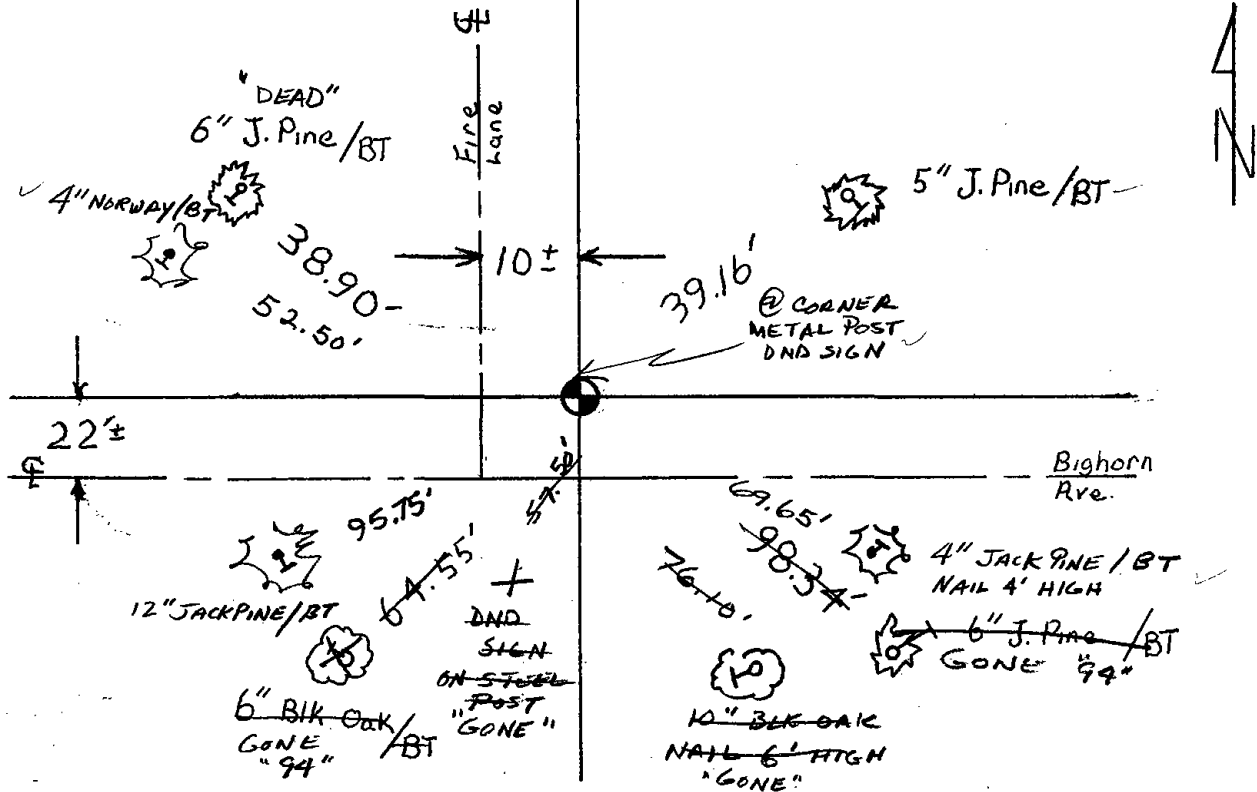
(Show at least four ties)

NOTE:

Ties in trees to nail in disc.



COR. OK 11-29-78 RN-DA



The top of this monument is broken off.
 New ties set on 4-13-84 DK-SS

TIES OK 12-28-88 SS

2-GONE, 2-NEW TIE, MON TOP BROKEN OFF, RR-JG 3/1/99

OK, 2-12-98 - JG

2-GONE, 3-NEW, 12-31-02 - JG