

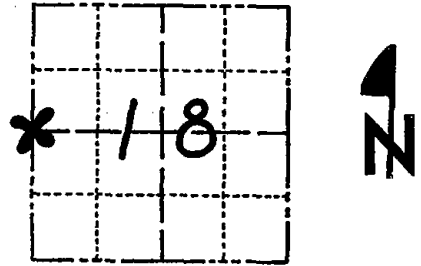
Government Land Corner Certificate

ADAMS County

CORNER NO. 54
 SECTION 18
 TOWN 19
 RANGE 5

TYPE OF MONUMENT: ~~HARRISON~~ MAG NAIL/DISC IN BITUMINOUS
 STATE PLANE COORDINATES: N _____
 E _____

ELEVATION — M.S.L. DATUM: _____
 THETA ANGLE: _____
 FIELD BOOK: 54 PAGE 45
 DRAWN BY: BETTY MERZ



LOCATION
(Indicated by 'X')

BASIS FOR MONUMENT LOCATION

Show info such as: History of corner, with reference to Vol. and pg., dates, surveyor; exact description of monument replaced; if location computed, by taped or EDM traverse; landowner remarks, etc. (Use reverse side if necessary)

This corner was set by doubling over a line between the SW corner of section 18 and the NW corner of the NWSW of Section 18. Existing Iron Pipes were found along the North line of the NESE of Section 13-19-4. These were used to determine the location of the 40 corner. This ^{corner} matches the original note distances extremely well. Normal methods of setting this corner were unable to be used due to the flooding of Petenwell Flowage by the Wisconsin River Power Company earlier in the 1900's.

SEAL:



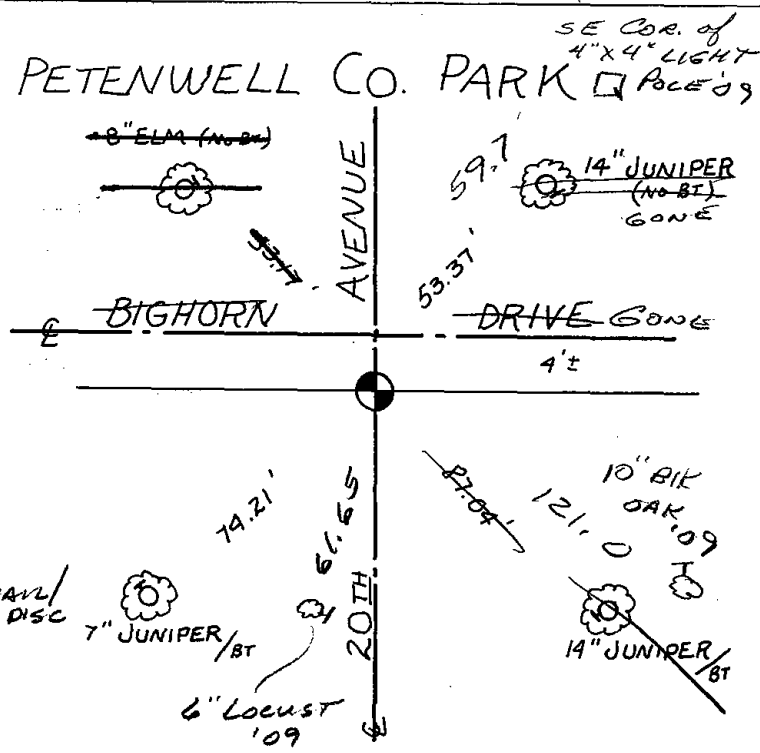
DATA SHOWN HERE ON CERTIFIED CORRECT:

Anthony B. Kiedrowski
 Registered Land Surveyor

DATE: 9/6/78

TIE SKETCH

Show at least four ties, also fence lines, roads, topo, size and type of witness trees' and if off road - best way to arrive at corner.



MAINTENANCE RECORD

Date	Init.	Remarks
3-14-79	RN-SS	OK
1-26-09	MS-SS	3 NEW TIES - FO MAG NAIL/DISC

Government Land Corner Certificate

ADAMS County

TYPE OF MONUMENT: HARRISON

STATE PLANE COORDINATES: N _____
E _____

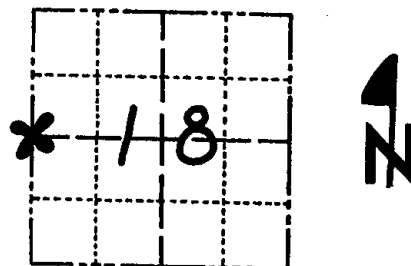
ELEVATION — M.S.L. DATUM: _____

THETA ANGLE: _____

FIELD BOOK: 54 PAGE 45

DRAWN BY: BETTY MERZ

CORNER NO. 54
SECTION 18
TOWN 19
RANGE 5



LOCATION
(Indicated by 'X')

SEAL:



DATA SHOWN HERE ON
CERTIFIED CORRECT:

Anthony B. Kiedrowski
Registered Land Surveyor

DATE: 9/6/78

BASIS FOR MONUMENT LOCATION

Show info such as: History of corner, with reference to Vol. and pg., dates, surveyor; exact description of monument replaced; if location computed, by taped or EDM traverse; landowner remarks, etc. (Use reverse side if necessary)

This corner was set by doubling over a line between the SW corner of section 18 and the NW corner of the NWSW of Section 18. Existing Iron Pipes were found along the North line of the NESE of Section 13-19-4. These were used to determine the location of the 40 corner. This corner matches the original note distances extremely well.

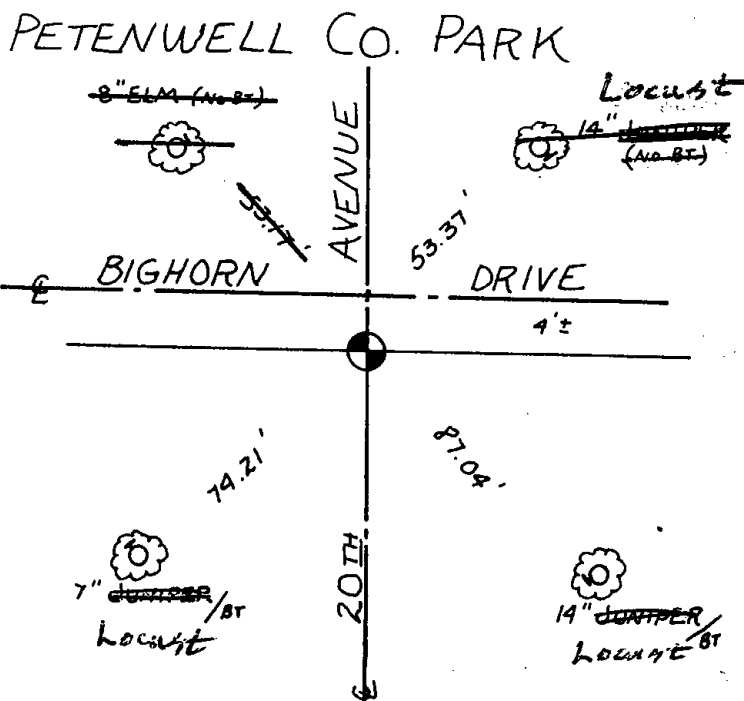
Normal methods of setting this corner were unable to be used due to the flooding of Petenwell Flowage by the Wisconsin River Power Company earlier in the 1900's.

Ties old Apr 5 83 Ken Carlson

* CORNER WAS REMOVED FOR CONSTRUCTION 1998
TO BE RESET IN 1999 - MSA PROFESSIONAL SERVICES-56

TIE SKETCH

Show at least four ties, also fence lines, roads, topo, size and type of witness trees and if off road - best way to arrive at corner.



filed for record this 15th

day of June 19 83
per 59.40 Wisconsin Statutes.

[Signature]
ADAMS COUNTY SURVEYOR

MAINTENANCE RECORD

Date	Init.	Remarks
3-14-79	AK-SS	OK
4-2-84	DK-SS	1 gone no new taken
11-27-88	SS	OK
2-11-94	CR-JG	OK