

PUBLIC LAND SURVEY MONUMENT RECORD

TYPE OF MONUMENT: HARRISON
 ADAMS COUNTY COORDINATES, NAD 83 (2005)

N. 274301.613

E. 509528.888

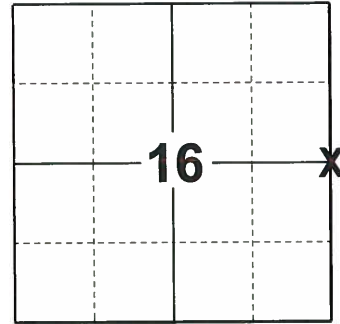
ELEVATION- - - - - DATUM - - - - -

FIELD WORK DATE: 10/16/2019

BASIS FOR MONUMENT LOCATION

1973 - PLS 878 EXCAVATED ENTIRE AREA WITH BACKHOE AND FOUND NOTHING; DETERMINED BY TRAVERSING THE SECTION. SET ON STRAIGHT LINE AND EQUIDISTANT BETWEEN SECTION CORNERS.

2019 - PLS 2675 FOUND HARRISON 12" BELOW THE ROAD SURFACE, 1 TIE, AND 1 WITNESS. THE MONUMENT AGREES WITH THE TIE AND WITNESS. ACCEPTED THE HARRISON AS THE CORNER LOCATION. SET 3 NEW TIES AND MEASURED TO THE EXISTING TIE AND WITNESS.



LOCATION
 (INDICATE CORNER BY "X")

SEAL:



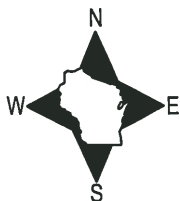
DATA SHOWN HERE ON THIS TIE SHEET IS CORRECT AND COMPLETE TO THE BEST OF MY KNOWLEDGE AND BELIEF.

PROFESSIONAL LAND SURVEYOR

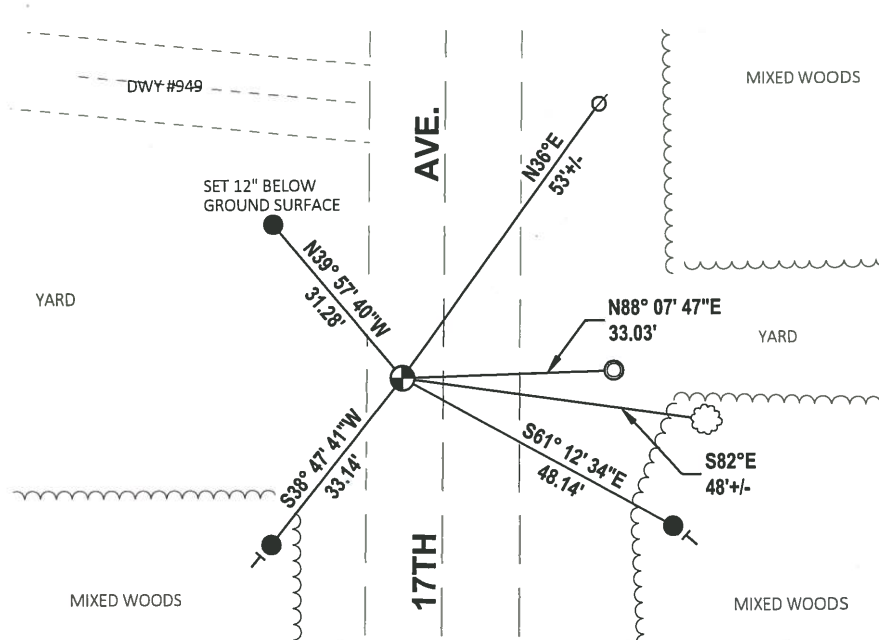
DATE 11/25/19

- TIE SKETCH

NOTE: THE CORNER LANDS 6'+/- WEST OF CENTERLINE OF 17TH AVE.



- SET 3/4" x 18" IRON REBAR, 1.50#/FT
- FOUND 1-1/4" O.D. IRON PIPE
- ⊕ FOUND HARRISON MONUMENT
- ∅ WITNESS POWER POLE
- ├ VINYL "T" POST
- ⊙ WITNESS TREE



ADAMS COUNTY

Survey Monument Record

TYPE OF MONUMENT: HARRISON MONUMENT

STATE PLANE COORDINATES: N _____

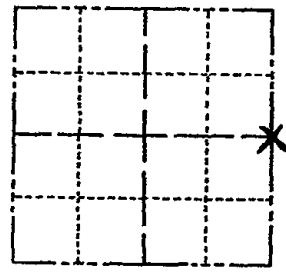
E _____

ELEVATION — M.S.L. DATUM: _____

THETA ANGLE: _____

FIELD BOOK: 105 PAGE 50 51

CORNER NO. 178
SECTION 16
TOWN 19
RANGE 5



LOCATION
(Indicated by 'X')

SEAL:



BASIS FOR MONUMENT LOCATION

(Use reverse side if necessary)

Show info such as: History of corner, with reference to Vol. and pg, dates, surveyor; exact description of monument replaced; if location computed, by taped or EDM traverse; landowner remarks, etc.

Area
Excavated entire intersection with backhoe and found nothing; determined by traversing the section

August 9, 1972

Anthony B. Kiedrowski R.L.S. 878
Set on straight line
Eq. distant between
2cc corners?

- OK 3-20-79 RN-SS
- OK 4-21-84 DK-SS
- " 1-29-88 SS
- OK 2-25-94 CR-JB
- OK 1-22-99 -JG

CERTIFIED CORRECT:

Anthony B. Kiedrowski
Registered Land Surveyor

DATE: 2-2-73

TIE SKETCH 2-GONE, 3-NEW, 1-6-04-JG (MON. IS OVER 1' DEEP)

(Show at least four ties)
OK 1-28-09 SS-MS

