

PUBLIC LAND SURVEY MONUMENT RECORD

TYPE OF MONUMENT: HARRISON (BROKEN-TOP)
 ADAMS COUNTY COORDINATES, NAD 83 (2005)

N. 271643.725

E. 496270.609

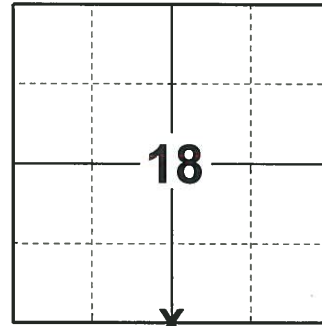
ELEVATION- - - - DATUM - - - -

FIELD WORK DATE: 10/22/2019

BASIS FOR MONUMENT LOCATION

1977 - PLS 878 EXCAVATED WITH BACKHOE. FOUND 1" IRON PIPE DRIVEN INTO STAIN FROM 4" WOOD POST. REPLACED PIPE WITH HARRISON. LOCATION VERIFIED BY EDM TRAVERSE.

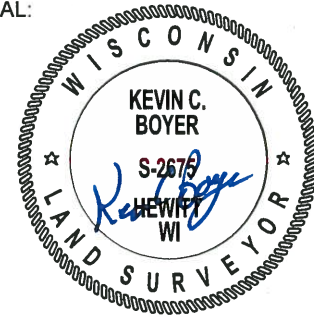
2019 - PLS 2675 FOUND A MAG NAIL IN THE ROAD SURFACE AND 2 TIES. REMOVED THE MAG NAIL AND FOUND A HARRISON MONUMENT WITH A BROKEN-TOP 18" BELOW THE ROAD SURFACE. THE MONUMENT AGREES WITH THE EXISTING TIES. ACCEPTED THE HARRISON MONUMENT WITH A BROKEN-TOP AS THE CORNER LOCATION. SET 2 NEW TIES AND MEASURED TO THE TIES.



LOCATION

(INDICATE CORNER BY "X")

SEAL:



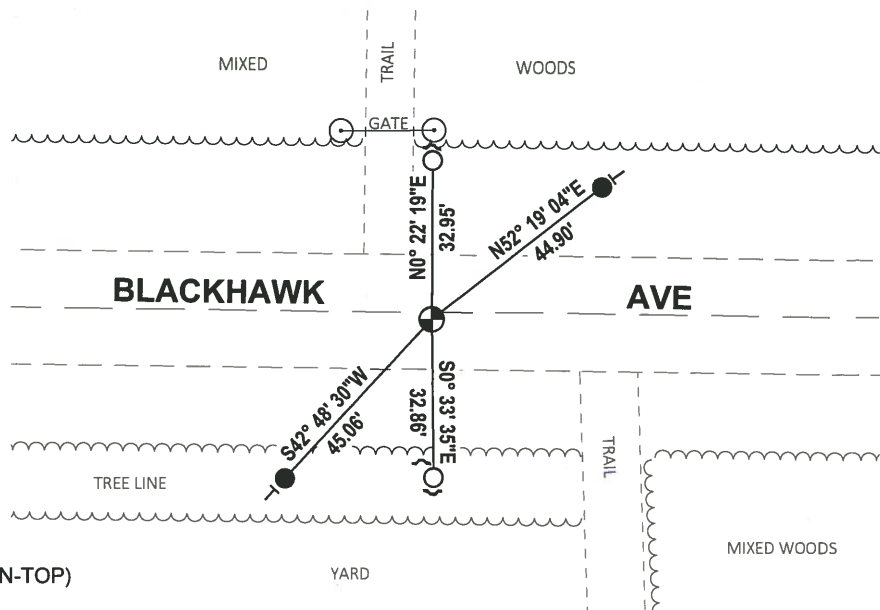
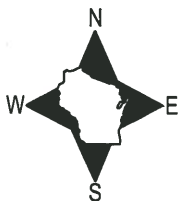
DATA SHOWN HERE ON THIS TIE SHEET IS CORRECT AND COMPLETE TO THE BEST OF MY KNOWLEDGE AND BELIEF.

PROFESSIONAL LAND SURVEYOR

DATE 11/25/19

TIE SKETCH

NOTE: THE CORNER FALLS 1.5' ± SOUTH OF THE CENTERLINE OF BLACKHAWK AVE.



- SET 3/4" x 18" IRON REBAR, 1.50#/FT
- FOUND 3/4" IRON ROD
- ⊕ FOUND HARRISON MONUMENT (BROKEN-TOP)
- ↙ STEEL FENCE POST
- VINYL "T" POST

ADAMS COUNTY

Survey Monument Record

TYPE OF MONUMENT: Harrison

STATE PLANE COORDINATES: N _____

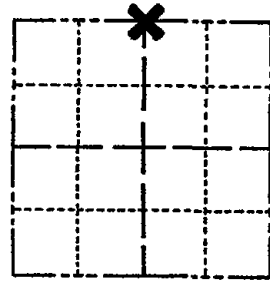
E _____

ELEVATION — M.S.L. DATUM: _____

THETA ANGLE: _____

FIELD BOOK: 38 PAGE 39

CORNER NO. 62
SECTION 19
TOWN 19
RANGE 5



LOCATION
(Indicated by 'X')

SEAL:



BASIS FOR MONUMENT LOCATION

(Use reverse side if necessary)

Show info such as: History of corner, with reference to Vol. and pg, dates, surveyor; exact description of monument replaced; if location computed, by taped or EDM traverse; landowner remarks, etc.

Excavated with backhoe. Found 1" iron pipe driven into stain from 4" wood post. Replaced pipe with Harrison. Location verified by EDM traverse.

Ok 4-2-84 SS-DK
" 11-29-88 SS

OK 3-14-79 RN-SS

1-GONE, cor OK 2-11-99-GR-JG

OK 1-28-99 - JG-JF

CERTIFIED CORRECT:

Anthony B. Kiedrowski

Registered Land Surveyor
DATE: 7/17/77 5/4/77

TIE SKETCH 2-GONE, 2-NEW, TOP BROKEN OFF MON, 1-5-09 - JG

(Show at least four ties)

1-26-09 SS

