

## PUBLIC LAND SURVEY MONUMENT RECORD

TYPE OF MONUMENT: HARRISON  
ADAMS COUNTY COORDINATES, NAD 83 (2005)

N. 271651.889  
E. 504214.434

ELEVATION- - - - DATUM - - - -

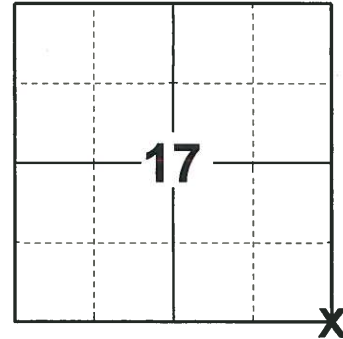
FIELD WORK DATE: 10/17/2019

### BASIS FOR MONUMENT LOCATION

1973 - PLS 878 FOUND R.R. SPIKE. ACCEPTED RR SPIKE AS CORRECT AFTER TRAVERSING ENTIRE SECTION AND COMPARING POSSESSION LINES. THIS POINT ALSO USED IN SURVEYS NORTHWEST OF HERE.

2000 - PLS 878 UPDATED TIE SHEET TO SHOW TIES IN PLACE AFTER MONUMENT WAS RESET FOLLOWING ROAD CONSTRUCTION.

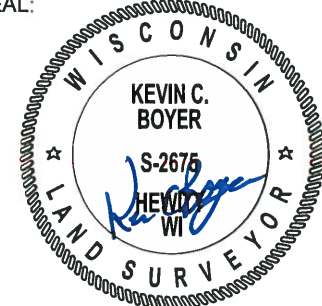
2019 - PLS 2675 FOUND HARRISON 6" BELOW THE ROAD SURFACE AND 1 WITNESS. THE MONUMENT AGREES WITH THE WITNESS. ACCEPTED THE HARRISON AS THE CORNER LOCATION. SET 4 NEW TIES AND MEASURED TO THE EXISTING WITNESS.



LOCATION

(INDICATE CORNER BY "X")

SEAL:



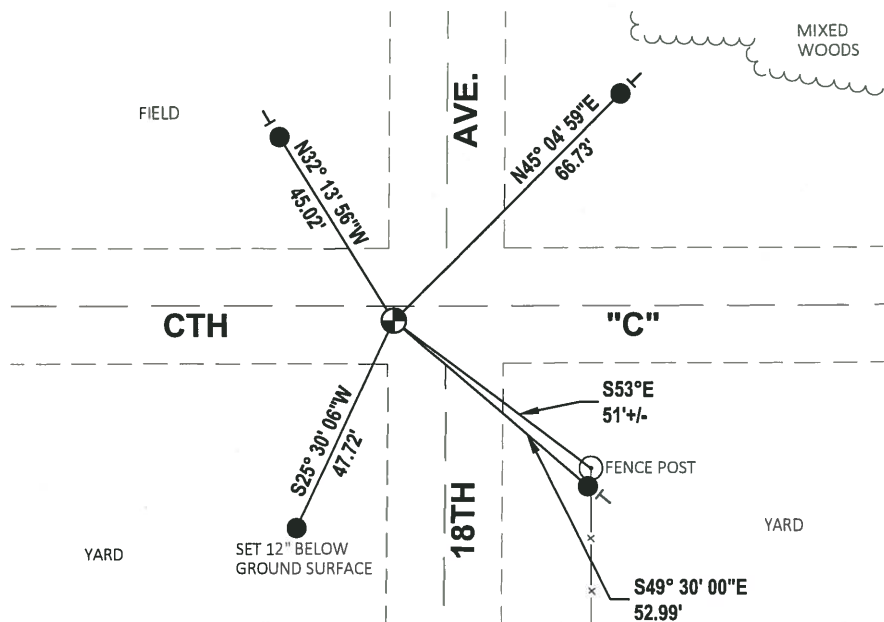
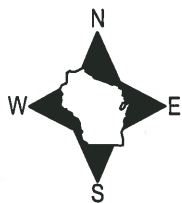
DATA SHOWN HERE ON THIS TIE SHEET IS CORRECT AND COMPLETE TO THE BEST OF MY KNOWLEDGE AND BELIEF.

PROFESSIONAL LAND SURVEYOR

DATE 11/25/19

### TIE SKETCH

NOTE: THE CORNER LANDS 3'+/- SOUTH OF CENTERLINE OF CTH "C" AND 11'+/- WEST OF CENTERLINE OF 18TH AVE.

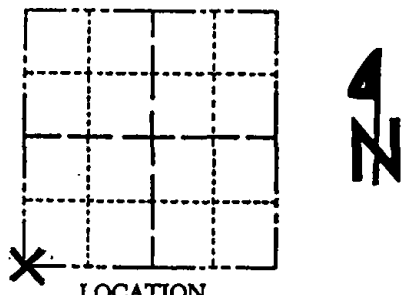


- SET 3/4" x 18" IRON REBAR, 1.50#/FT
- ⊙ FOUND HARRISON MONUMENT
- ⌒ STEEL FENCE POST
- ⊥ VINYL "T" POST

# Government Land Corner Certificate

ADAMS County  
 TYPE OF MONUMENT: Harrison standard  
 STATE PLANE COORDINATES: N \_\_\_\_\_  
 E \_\_\_\_\_  
 ELEVATION — M.S.L. DATUM: \_\_\_\_\_  
 THETA ANGLE: \_\_\_\_\_  
 FIELD BOOK: \_\_\_\_\_ PAGE \_\_\_\_\_  
 DRAWN BY: \_\_\_\_\_

CORNER NO. 65  
 SECTION 16  
 TOWN 19  
 RANGE 5



LOCATION  
(Indicated by 'X')

## BASIS FOR MONUMENT LOCATION

Show info such as: History of corner, with reference to Vol. and pg., dates, surveyor; exact description of monument replaced; if location computed, by taped or EDM traverse; landowner remarks, etc. (Use reverse side if necessary)

SEAL: \_\_\_\_\_

This is an updated tie sheet to show ties in place after monument was reset following road construction. 7-25-00

SEE TIE SHEET BY A.B. KIEDROWSKI, 1-30-73, FOR ADDITIONAL INFORMATION.

DATA SHOWN HERE ON CERTIFIED CORRECT:

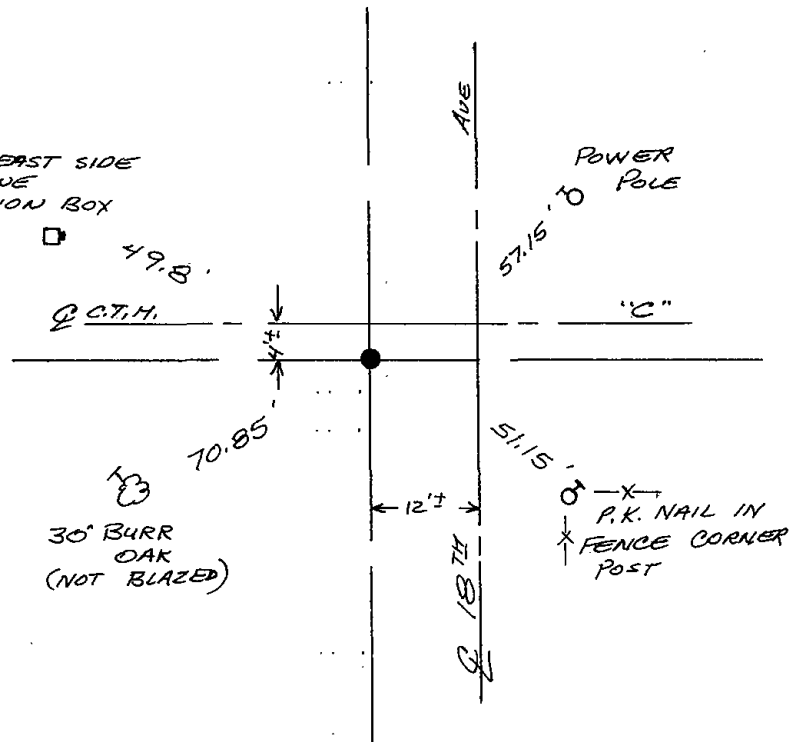
Registered Land Surveyor

DATE: \_\_\_\_\_

## TIE SKETCH

Show at least four ties, also fence lines, roads, topo, size and type of witness trees' and if off road - best way to arrive at corner.

NUT ON EAST SIDE  
TELEPHONE  
JUNCTION BOX



## MAINTENANCE RECORD

Date	Init.	Remarks
12-23-03	JG	OK
1-26-09	SS	OK

ADAMS COUNTY

Survey Monument Record

TYPE OF MONUMENT: HARRISON MONUMENT

STATE PLANE COORDINATES: N \_\_\_\_\_  
E \_\_\_\_\_

ELEVATION — M.S.L. DATUM: \_\_\_\_\_

THETA ANGLE: \_\_\_\_\_

FIELD BOOK: 105 PAGE 50

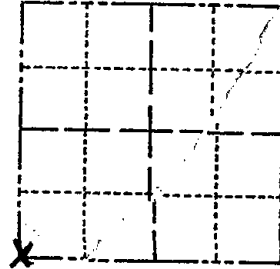
CORNER NO. 177

SECTION 16

TOWN 19

RANGE 5

65



LOCATION  
(Indicated by 'X')

BASIS FOR MONUMENT LOCATION

(Use reverse side if necessary)

Show info such as: History of corner, with reference to Vol. and pg, dates, surveyor; exact description of monument replaced; if location computed, by taped or EDM traverse; landowner remarks, etc.

Found r.r. spike

*Mon. Removed - ROAD  
CONST. 6-7-00 JG-SS  
Now DESTROYED  
RESET 7-25-00*

-Found

August 9, 1972

Anthony B. Kiedrowski R.L.S. 878

Accepted RR spike as correct after traversing entire section and comparing possession lines. This point also used in surveys northwest of here.

SEAL:



CERTIFIED CORRECT:

*Anthony B. Kiedrowski*  
Registered Land Surveyor

DATE: 1-30-73

OK 3-20-79 RD 25  
OK 2-14-94 CR-JG  
OK 3-21-84 SS

TIE SKETCH 2-GONE, 3-NEW TIES, 1-28-99 JG-JF

(Show at least four ties)

