

PUBLIC LAND SURVEY MONUMENT RECORD

TYPE OF MONUMENT: 1-1/4" IRON ROD
 ADAMS COUNTY COORDINATES, NAD 83 (2005)

N. 271658.624

E. 506855.473

ELEVATION- - - - - DATUM - - - - -

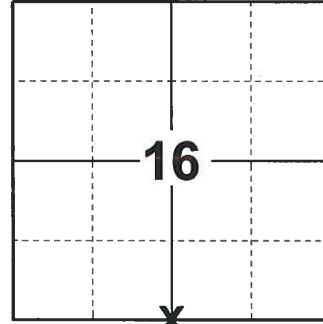
FIELD WORK DATE: 10/16/2019

BASIS FOR MONUMENT LOCATION

1972 - PLS 878 DETERMINED BY TRAVERSING.

2000 - PLS UNKNOWN UPDATED TIE SHEET TO SHOW TIES IN PLACE AFTER MONUMENT WAS RESET FOLLOWING ROAD CONSTRUCTION.

2019 - PLS 2675 FOUND 1 1/4" IRON ROD 6" BELOW THE ROAD SURFACE, 1 TIE, AND 1 WITNESS. THE MONUMENT AGREES WITH THE TIE AND WITNESS. ACCEPTED THE 1 1/4" IRON ROD AS THE CORNER LOCATION. SET 2 NEW TIES, MEASURED TO A FOUND PROPERTY IRON, AND THE EXISTING TIE AND WITNESS.



LOCATION

(INDICATE CORNER BY "X")

SEAL:



DATA SHOWN HERE ON THIS TIE SHEET IS CORRECT AND COMPLETE TO THE BEST OF MY KNOWLEDGE AND BELIEF.

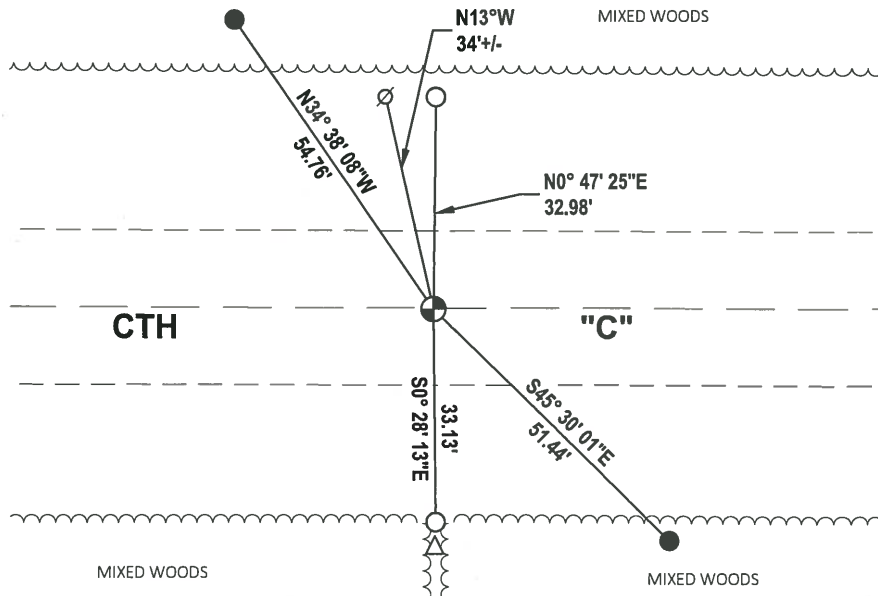
PROFESSIONAL LAND SURVEYOR

DATE 11/25/19

- TIE SKETCH



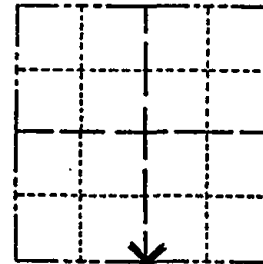
- SET 3/4" x 18" IRON REBAR, 1.50#/FT
- FOUND 3/4" IRON ROD
- ⊕ FOUND 1-1/4" IRON ROD
- ∅ WITNESS POWER POLE
- ↙ STEEL FENCE POST
- VINYL "T" POST
- △ NO TRESPASS SIGN



Government Land Corner Certificate

AOAMS County
 TYPE OF MONUMENT: 1 1/4" x 30" IRON ROD
 STATE PLANE COORDINATES: N _____
 E _____
 ELEVATION — M.S.L. DATUM: _____
 THETA ANGLE: _____
 FIELD BOOK: _____ PAGE _____
 DRAWN BY: _____

CORNER NO. 66
 SECTION 16
 TOWN 19
 RANGE 5



LOCATION
(Indicated by 'X')

SEAL: _____

BASIS FOR MONUMENT LOCATION

Show info such as: History of corner, with reference to Vol. and pg., dates, surveyor; exact description of monument replaced; if location computed, by taped or EDM traverse; landowner remarks, etc. (Use reverse side if necessary)

THIS IS AN UPDATED TIE SHEET TO SHOW TIES IN PLACE AFTER MONUMENT WAS RESET FOLLOWING ROAD CONSTRUCTION. AUG, 2000

SEE TIE SHEET BY A.B. KIEDROWSKI, DATED 8-9-72 FOR ADDITIONAL INFORMATION.

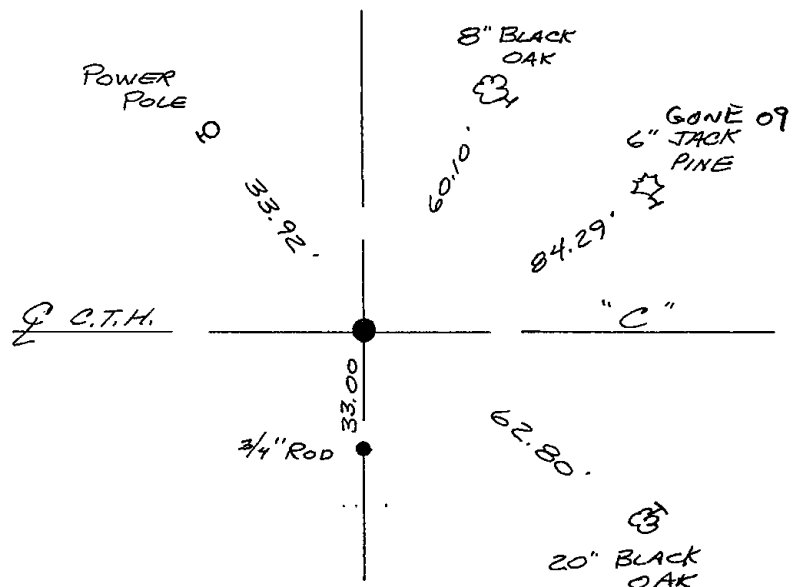
DATA SHOWN HERE ON
CERTIFIED CORRECT:

Registered Land Surveyor

DATE: _____

TIE SKETCH

Show at least four ties, also fence lines, roads, topo, size and type of witness trees' and if off road - best way to arrive at corner.



MAINTENANCE RECORD

Date	Init.	Remarks
12-23-03	JG	OK
1-26-09	SS	1 GONE

ADAMS COUNTY

CORNER NO. 179

Survey Monument Record

SECTION 16

TYPE OF MONUMENT: HARRISON MONUMENT

TOWN 19

STATE PLANE COORDINATES: N

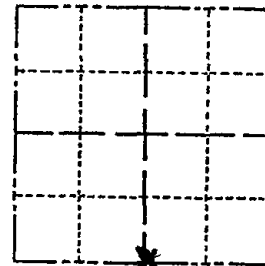
RANGE 5

E

ELEVATION -- M.S.L. DATUM:

THETA ANGLE:

FIELD BOOK: 105 PAGE 52



LOCATION (Indicated by 'X')

SEAL:



BASIS FOR MONUMENT LOCATION

(Use reverse side if necessary)

Show info such as: History of corner, with reference to Vol. and pg, dates, surveyor; exact description of monument replaced; if location computed, by taped or EDM traverse; landowner remarks, etc.

determined by traverseing

August 9, 1972

Anthony B. Kiedrowski R.L.S. 878

MOD. REMOVED-ROAD CONST. - STORED AT SOUTH
BASE OF 20" BK OAK BT - SE - 6-7-00 JG-SS
SET 1 1/4" ROD AUG, 2000

OK 1-25-99-JG

OK - 2-25-79 CR-JG

OK 3-20-79 AN-SS

OK 3-21-84 SS

CERTIFIED CORRECT:

Anthony B. Kiedrowski
Registered Land Surveyor

DATE: 8/9/72

TIE SKETCH

(Show at least four ties)

