

PUBLIC LAND SURVEY MONUMENT RECORD

TYPE OF MONUMENT: HARRISON
 ADAMS COUNTY COORDINATES, NAD 83 (2005)

N. 271655.691

E. 512153.532

ELEVATION- - - DATUM - -

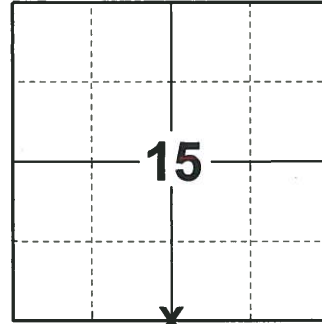
FIELD WORK DATE: 10/16/2019

BASIS FOR MONUMENT LOCATION

1980 - PLS 1478 SET EQUIDISTANT AND ON LINE BETWEEN ADJACENT SECTION CORNERS. NO EXCAVATION WAS MADE. NO RECORD OF ANY MONUMENTATION SUBSEQUENT TO THE ORIGINAL WAS FOUND.

2000 - PLS UNKNOWN UPDATED TIE SHEET TO SHOW TIES IN PLACE AFTER MONUMENT WAS RESET FOLLOWING ROAD CONSTRUCTION.

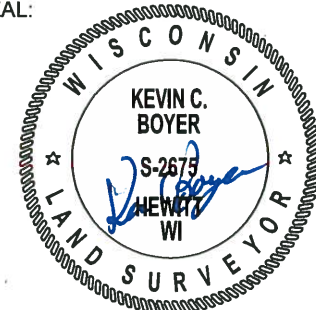
2019 - PLS 2675 FOUND HARRISON 6" BELOW THE ROAD SURFACE AND 1 WITNESS. THE MONUMENT AGREES WITH THE WITNESS. ACCEPTED THE HARRISON AS THE CORNER LOCATION. SET 4 NEW TIES AND MEASURED TO THE EXISTING WITNESS.



LOCATION

(INDICATE CORNER BY "X")

SEAL:



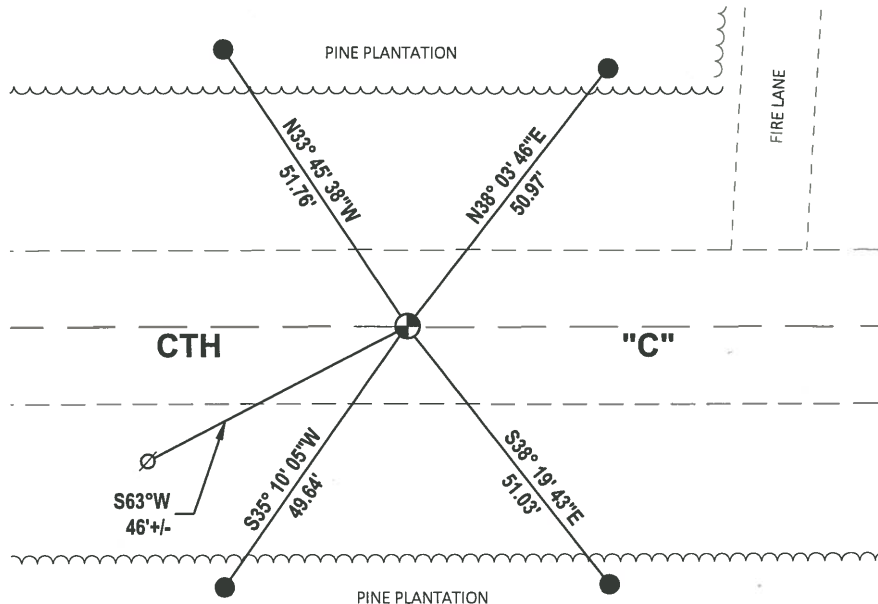
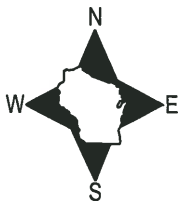
DATA SHOWN HERE ON THIS TIE SHEET IS CORRECT AND COMPLETE TO THE BEST OF MY KNOWLEDGE AND BELIEF.

PROFESSIONAL LAND SURVEYOR

DATE 11/25/19

- TIE SKETCH

NOTE: THE CORNER LANDS ON CENTERLINE OF CTH "C".

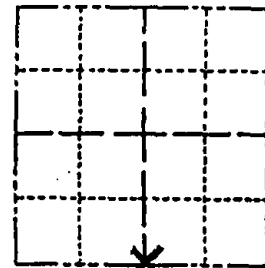


- SET 3/4" x 18" IRON REBAR, 1.50#/FT
- ⊕ FOUND HARRISON MONUMENT
- ⊙ WITNESS POWER POLE
- VINYL "T" POST

Government Land Corner Certificate

ADAMS County
 TYPE OF MONUMENT: Harrison standard
 STATE PLANE COORDINATES: N _____
 E _____
 ELEVATION — M.S.L. DATUM: _____
 THETA ANGLE: _____
 FIELD BOOK: _____ PAGE _____
 DRAWN BY: _____

CORNER NO. 68
 SECTION 15
 TOWN 19
 RANGE 5



LOCATION
(Indicated by 'X')

BASIS FOR MONUMENT LOCATION

Show info such as: History of corner, with reference to Vol. and pg., dates, surveyor; exact description of monument replaced; if location computed, by taped or EDM traverse; landowner remarks, etc. (Use reverse side if necessary)

SEAL:

This is an updated tie sheet to show ties in place after monument was reset following road construction. AUG, 2000
 SEE TIE SHEET BY G. RHINEMART, 2-20-80, FOR ADDITIONAL INFORMATION.

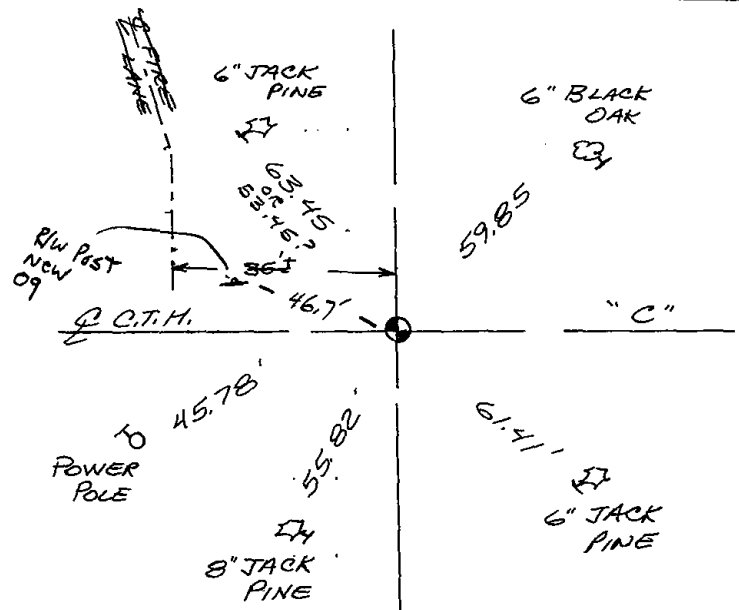
DATA SHOWN HERE ON CERTIFIED CORRECT:

Registered Land Surveyor

DATE: _____

TIE SKETCH

Show at least four ties, also fence lines, roads, topo, size and type of witness trees' and if off road - best way to arrive at corner.



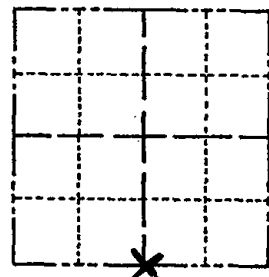
MAINTENANCE RECORD

Date	Init.	Remarks
1-5-04	JG	OK
1-28-09	SS	1 New

Government Land Corner Certificate

Adams County
 TYPE OF MONUMENT: Harrison Monument
 STATE PLANE COORDINATES: N _____
 E _____
 ELEVATION — M.S.L. DATUM: _____
 THETA ANGLE: _____
 FIELD BOOK: 83 PAGE 69
 DRAWN BY: Greg Rhinehart

CORNER NO. 68
 SECTION 15
 TOWN 19
 RANGE 5

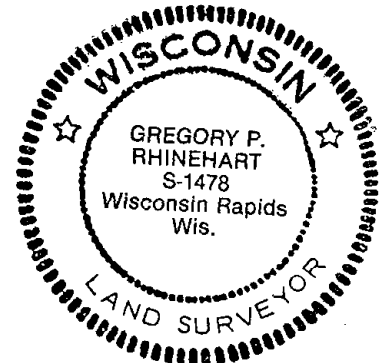


BASIS FOR MONUMENT LOCATION

Show info such as: History of corner, with reference to Vol. and pg., dates, surveyor; exact description of monument replaced; if location computed, by taped or EDM traverse; landowner remarks, etc. (Use reverse side if necessary)

Set equidistant and on line between adjacent section corners. No excavation was made. No record of any monumentation subsequent to the original was found.

SEAL:



DATA SHOWN HERE ON CERTIFIED CORRECT:

Gregory P Rhinehart
 Registered Land Surveyor

DATE: 2/20/80

Ok 4-12 - 84 SS
 OK - 2-25-94 CR - JG
 OK 1-28-99 - JG - JK

TIE SKETCH

Show at least four ties, also fence lines, roads, topo, size and type of witness trees' and if off road - best way to arrive at corner.

