

## PUBLIC LAND SURVEY MONUMENT RECORD

TYPE OF MONUMENT: HARRISON  
 ADAMS COUNTY COORDINATES, NAD 83 (2005)

N. 271667.488

E. 517513.399

ELEVATION- \_\_\_\_\_ DATUM \_\_\_\_\_

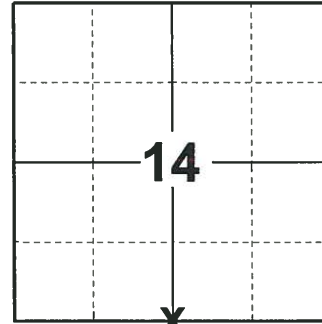
FIELD WORK DATE: 10/16/2019

### BASIS FOR MONUMENT LOCATION

1977 - PLS 878 SET CORNER PER PLAT OF PINE HILLS AS SURVEYED BY D. CHENEY IN APRIL OF 1969. SET A HARRISON MONUMENT.

YEAR UNKNOWN PLS 1478 UPDATED TIE SHEET TO SHOW TIES IN PLACE AFTER MONUMENT WAS RESET FOLLOWING ROAD CONSTRUCTION.

2019 - PLS 2675 FOUND HARRISON 6" BELOW THE ROAD SURFACE AND 2 WITNESS. THE MONUMENT AGREES WITH BOTH WITNESSES. ACCEPTED THE HARRISON AS THE CORNER LOCATION. SET 4 NEW TIES AND MEASURED TO THE EXISTING WITNESSES.



**LOCATION**  
 (INDICATE CORNER BY "X")

SEAL:



DATA SHOWN HERE ON THIS TIE SHEET IS CORRECT AND COMPLETE TO THE BEST OF MY KNOWLEDGE AND BELIEF.

PROFESSIONAL LAND SURVEYOR

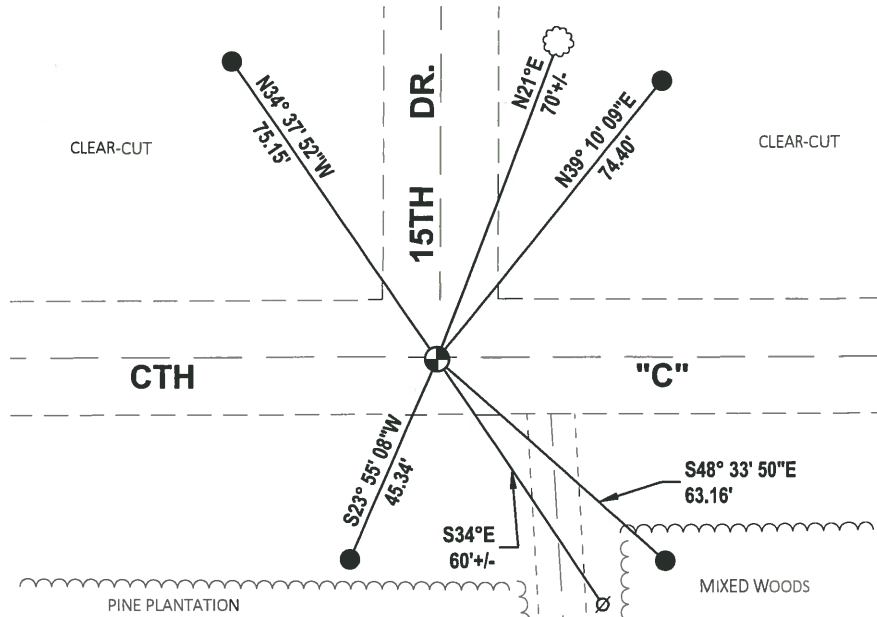
DATE 11/25/19

### TIE SKETCH

NOTE: THE CORNER LANDS 0.5'+/- SOUTH OF CENTERLINE OF CTH "C"



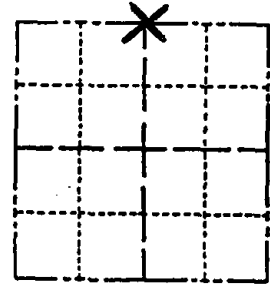
- SET 3/4" x 18" IRON REBAR, 1.50#/FT
- ⊕ FOUND HARRISON MONUMENT
- ∅ WITNESS POWER POLE
- VINYL "T" POST
- ☁ WITNESS TREE



# Government Land Corner Certificate

ADAMS County  
 TYPE OF MONUMENT: Harrison standard  
 STATE PLANE COORDINATES: N \_\_\_\_\_  
 E \_\_\_\_\_  
 ELEVATION — M.S.L. DATUM: \_\_\_\_\_  
 THETA ANGLE: \_\_\_\_\_  
 FIELD BOOK: \_\_\_\_\_ PAGE \_\_\_\_\_  
 DRAWN BY: \_\_\_\_\_

CORNER NO. 70  
 SECTION 23  
 TOWN 19  
 RANGE 5



LOCATION  
(Indicated by 'X')

## BASIS FOR MONUMENT LOCATION

Show info such as: History of corner, with reference to Vol. and pg., dates, surveyor; exact description of monument replaced; if location computed, by taped or EDM traverse; landowner remarks, etc. (Use reverse side if necessary)

SEAL:

This is an updated tie sheet to show ties in place after monument was reset following road construction.

SEE TIE SHEET BY A.B. KIEDROWSKI, 9-6-77,  
 FOR ADDITIONAL INFORMATION.

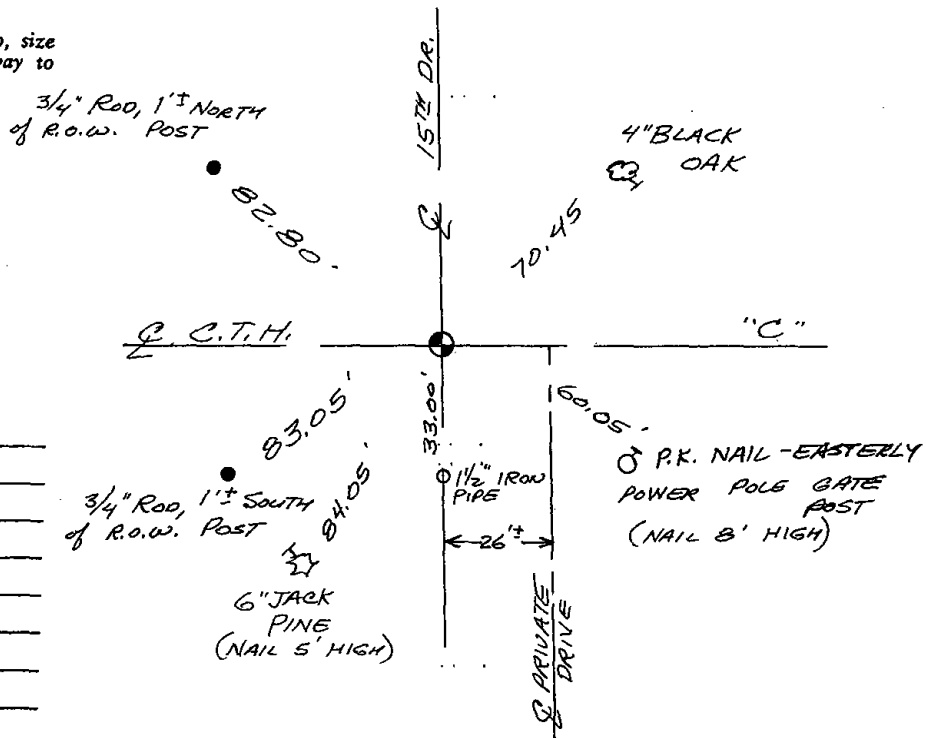
DATA SHOWN HERE ON  
 CERTIFIED CORRECT:

Registered Land Surveyor

DATE: \_\_\_\_\_

## TIE SKETCH

Show at least four ties, also fence lines, roads, topo, size and type of witness trees' and if off road - best way to arrive at corner.



## MAINTENANCE RECORD

Date	Init.	Remarks
1-02-03	JG	OK
1-28-09	SS	OK

ADAMS COUNTY

Survey Monument Record

TYPE OF MONUMENT: Standard Harrison

STATE PLANE COORDINATES: N \_\_\_\_\_

E \_\_\_\_\_

ELEVATION — M.S.L. DATUM: \_\_\_\_\_

THETA ANGLE: \_\_\_\_\_

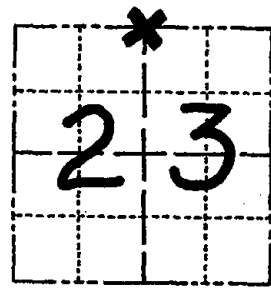
FIELD BOOK: 54 PAGE 3

CORNER NO. 70

SECTION 23

TOWN 19

RANGE 5



LOCATION  
(Indicated by 'X')

SEAL:



BASIS FOR MONUMENT LOCATION

(Use reverse side if necessary)

Show info such as: History of corner, with reference to Vol. and pg, dates, surveyor; exact description of monument replaced; if location computed, by taped or EDM traverse; landowner remarks, etc.

Set Corner per plat of Pine Hills as surveyed by D. Cheney in April of 1969.

Set Monument April 13, 1977

*Cor. OK 11-29-78 RN-DA*

See the reverse side for the updated map of 4-12 -84

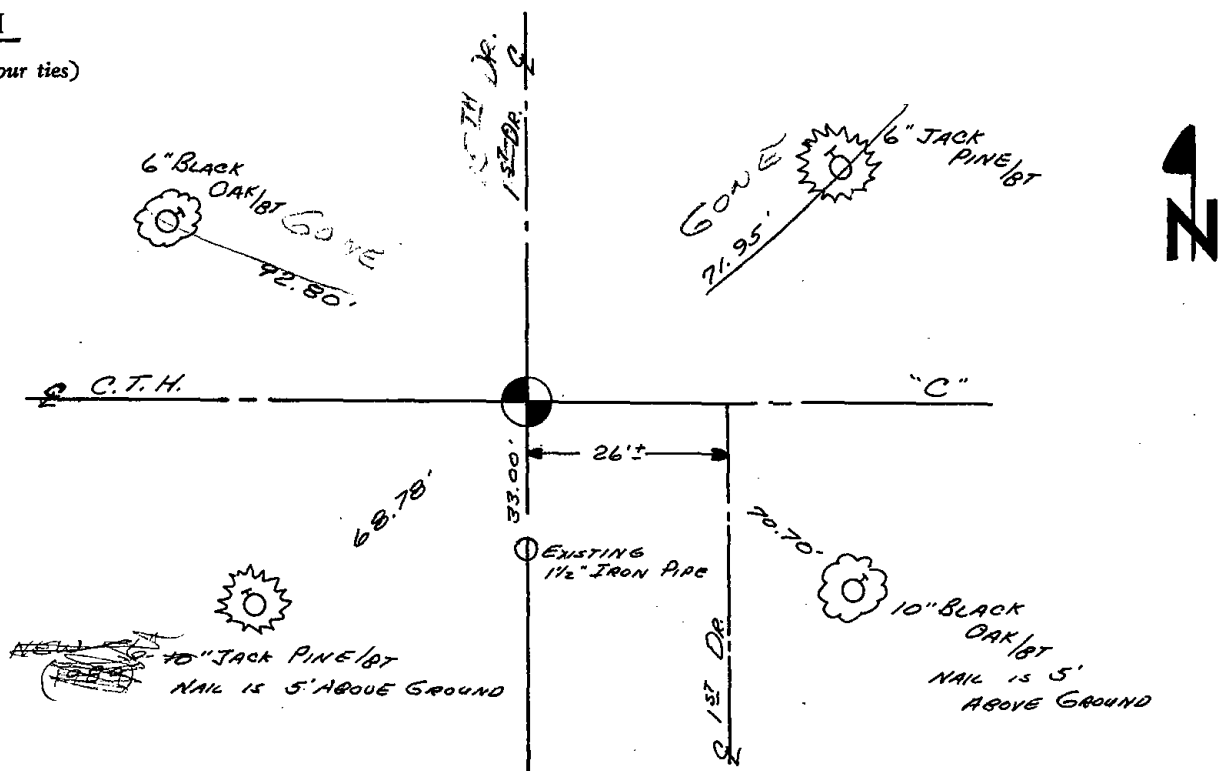
CERTIFIED CORRECT:

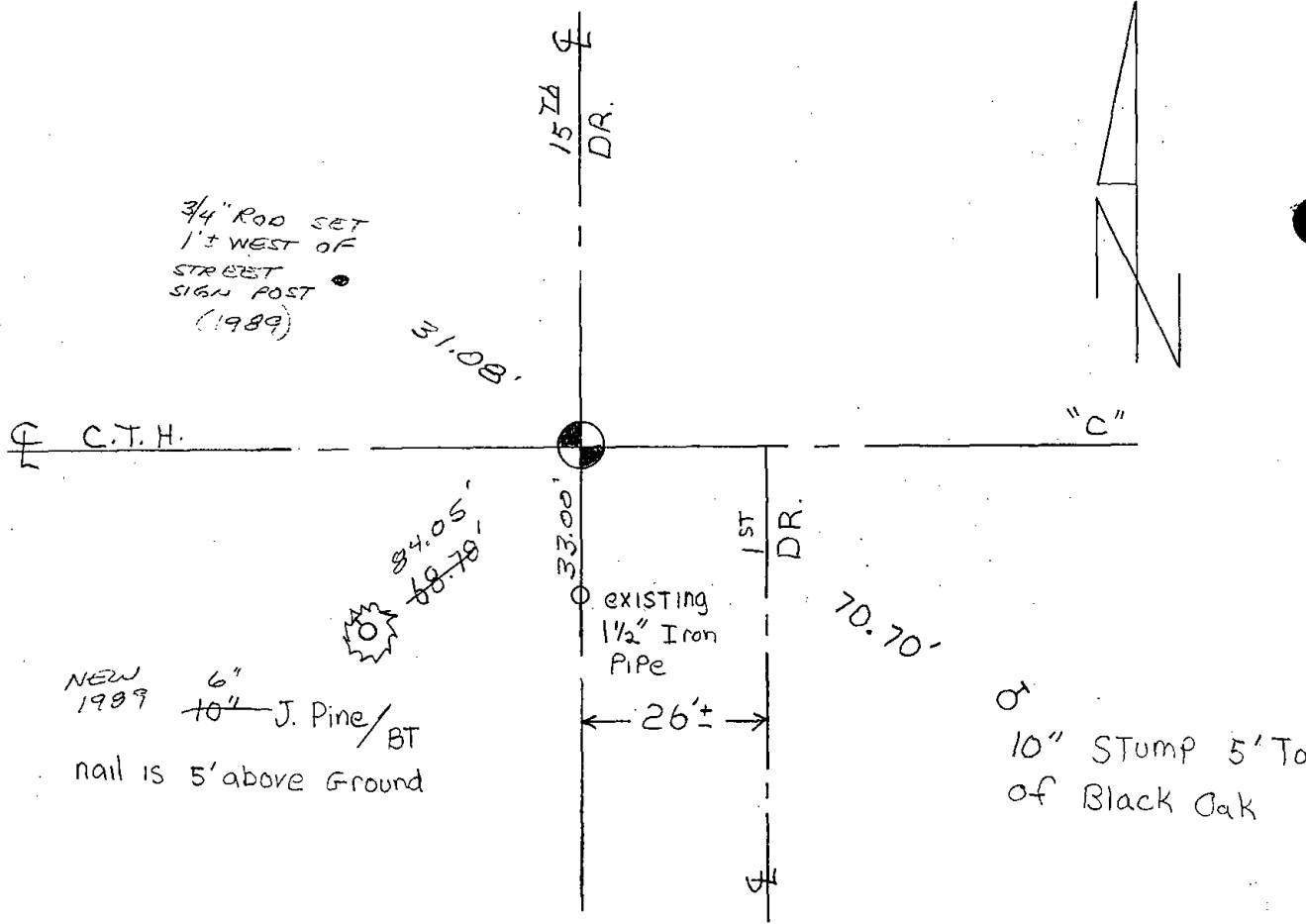
*Anthony B. Kiedrowski*  
Registered Land Surveyor

DATE: Sept, 6, 1977

TIE SKETCH

(Show at least four ties)





Map was updated on 4-12-84 SS-DK

7-7-89 2 NEW TIES MK-SS

OK 3-21-90 KEN CARLSON

OK 1 MARCH 94 CR-JG

OK 2-10-98-JG