

PUBLIC LAND SURVEY MONUMENT RECORD

TYPE OF MONUMENT: HARRISON
 ADAMS COUNTY COORDINATES, NAD 83 (2005)

N. 271673.866

E. 520161.457

ELEVATION- _____ DATUM _____

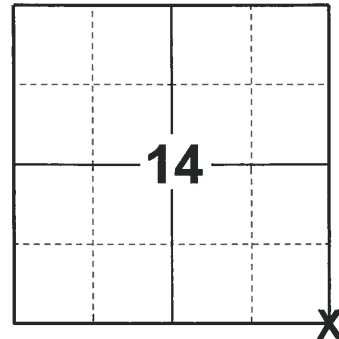
FIELD WORK DATE: 10/15/2019

BASIS FOR MONUMENT LOCATION

1971 - PLS 981 FOUND NAIL AND SET MONUMENT.

1984 - PLS UNKNOWN UPDATED TIE SHEET.

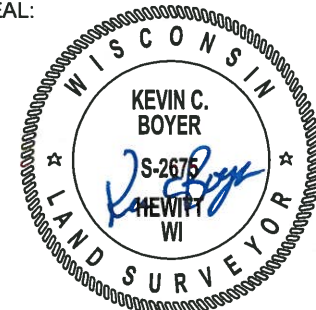
2019 - PLS 2675 FOUND HARRISON 4" BELOW THE ROAD SURFACE AND 2 WITNESSES. THE MONUMENT AGREES WITH BOTH WITNESSES. ACCEPTED THE HARRISON AS THE CORNER LOCATION. SET 4 NEW TIES AND MEASURED TO THE EXISTING WITNESSES.



LOCATION

(INDICATE CORNER BY "X")

SEAL:



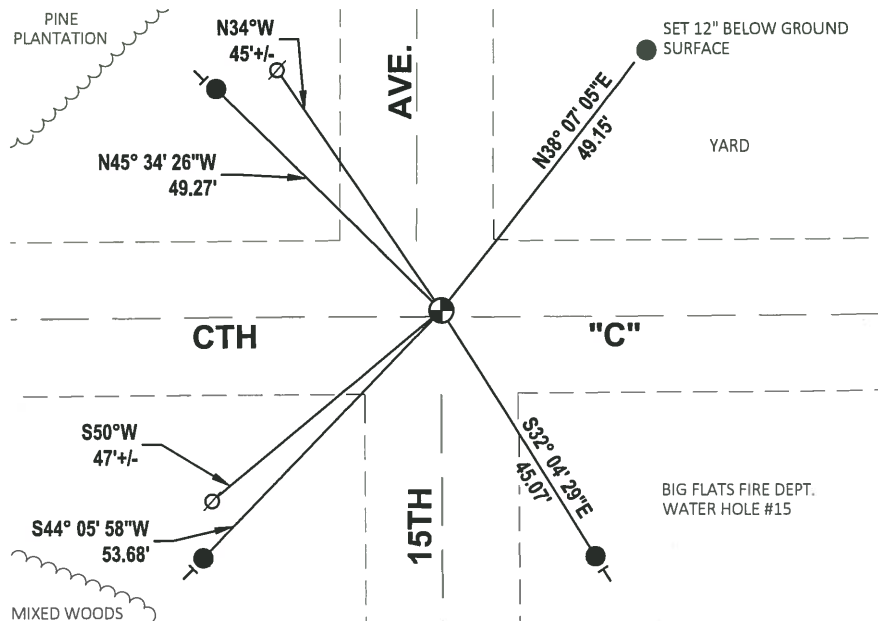
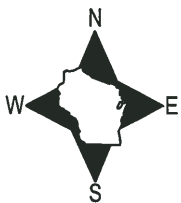
DATA SHOWN HERE ON THIS TIE SHEET IS CORRECT AND COMPLETE TO THE BEST OF MY KNOWLEDGE AND BELIEF.

PROFESSIONAL LAND SURVEYOR

DATE 11/25/19

- TIE SKETCH

NOTE: THE CORNER LANDS
 1'+/- NORTH OF CTH "C"



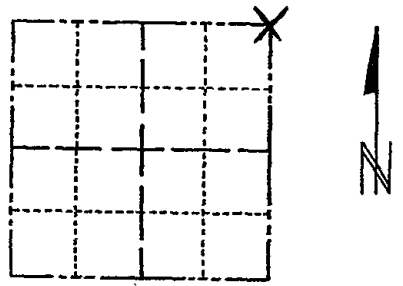
- SET 3/4" x 18" IRON REBAR, 1.50#/FT
- ⊕ FOUND HARRISON MONUMENT
- ⊘ WITNESS POWER POLE
- VINYL "T" POST

ADAMS COUNTY

Survey Monument Record

TYPE OF MONUMENT: 30" HARRISON
STATE PLANE COORDINATES: N _____
E _____
ELEVATION -- M.S.L. DATUM: _____
THETA ANGLE: _____
FIELD BOOK: 104 PAGE 54

CORNER NO. 22
SECTION 23
TOWN 19
RANGE 5



LOCATION (Indicated by 'X')

SEAL:

BASIS FOR MONUMENT LOCATION

(Use reverse side if necessary)

Show info such as: History of corner, with reference to Vol. and pg, dates, surveyor; exact description of monument replaced; if location computed, by taped or EDM traverse; landowner remarks, etc.

Found nail and set monument

July 14, 1971

Sam T. Mullen R.L.S. S-981

See the reverse side for the new map 4-12 -84

OK 1 MARCH 94 CR-V4

1-GONE, 2-NEW, 2-10-98-JG
(ALSO SEE CARLSON TIE SHEET DTD 3-21-90)
OK, 12-31-02-JG
1-GONE 1-28-09 SS-MS

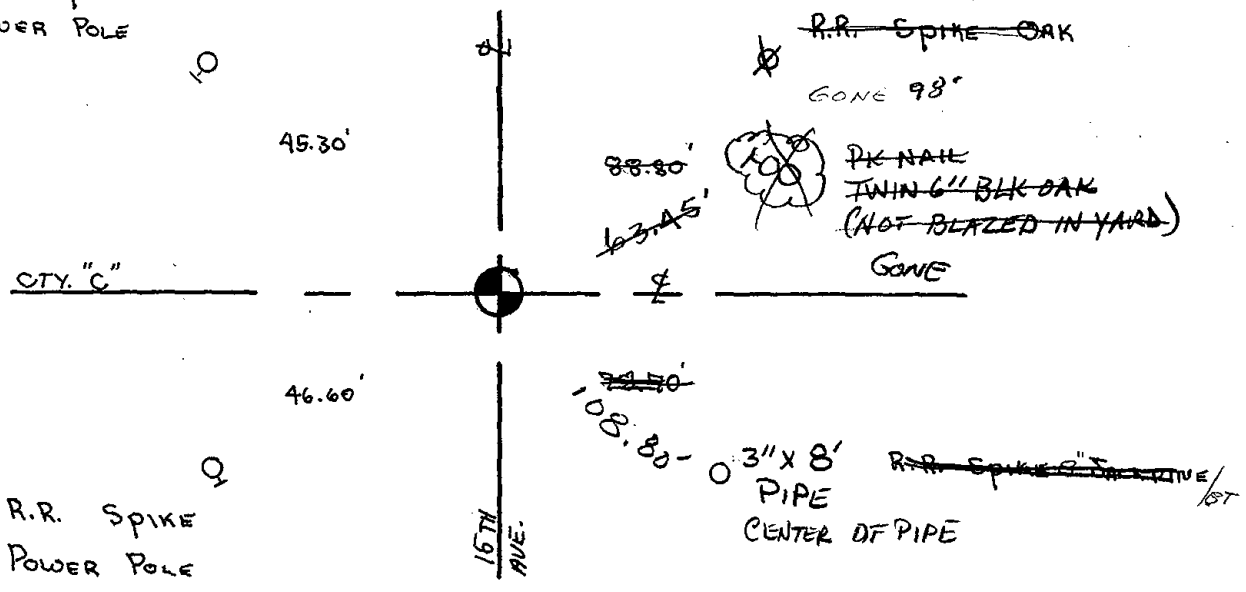
CERTIFIED CORRECT:

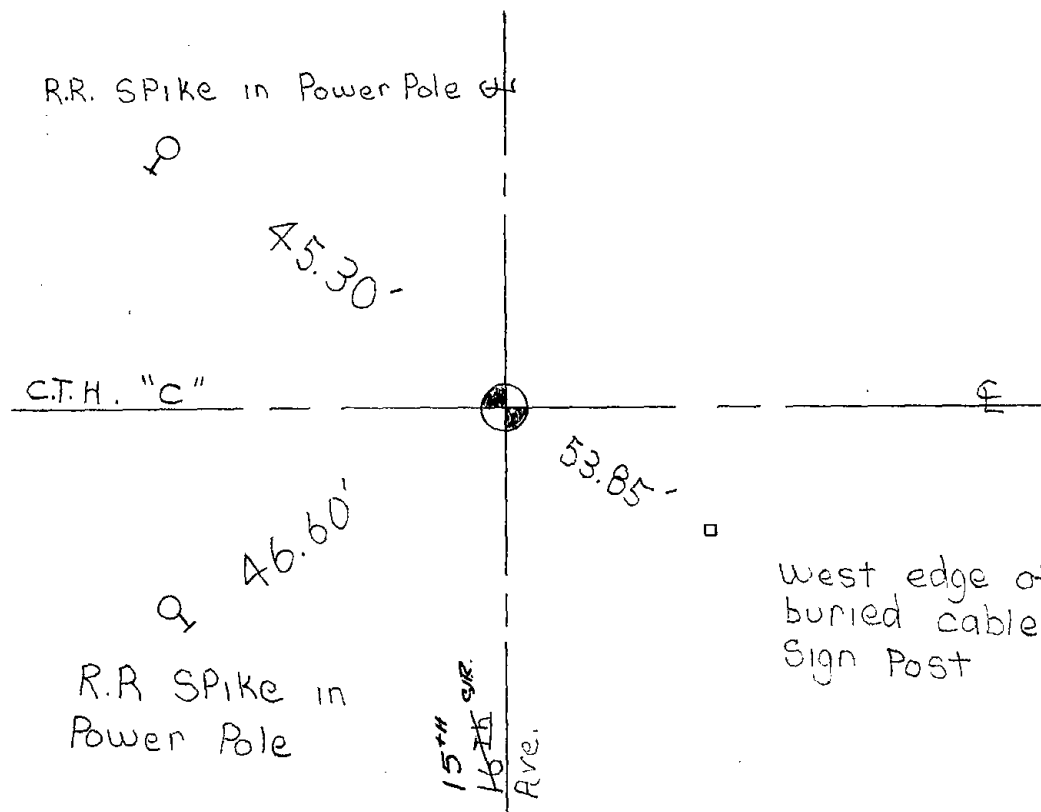
Registered Land Surveyor
DATE: _____

TIE SKETCH

(Show at least four ties)

R.R. SPIKE
POWER POLE





Map was updated on 4-12-84 SS-DK

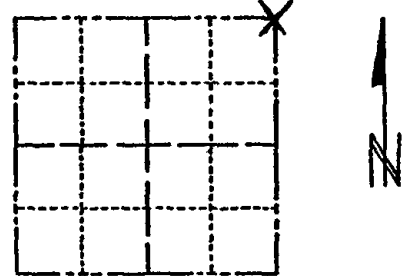
OK 11-28-83

SEE CARLSON 3-21-90 NEXT PAGE

DAMS COUNTY
Survey Monument Record

TYPE OF MONUMENT: 30" HARRISON
STATE PLANE COORDINATES: N _____
E _____
ELEVATION — M.S.L. DATUM: _____
THETA ANGLE: _____
FIELD BOOK: 104 PAGE 54

CORNER NO. 22
SECTION 23
TOWN 19
RANGE 5



LOCATION
(Indicated by 'X')

SEAL:

BASIS FOR MONUMENT LOCATION

(Use reverse side if necessary)

Show info such as: History of corner, with reference to Vol. and pg, dates, surveyor; exact description of monument replaced; if location computed, by taped or EDM traverse; landowner remarks, etc.

Found nail and set monument

July 14, 1971

Sam T. Mullen R.L.S. S-981

See the reverse side for the new map 4-12 -84

CERTIFIED CORRECT:

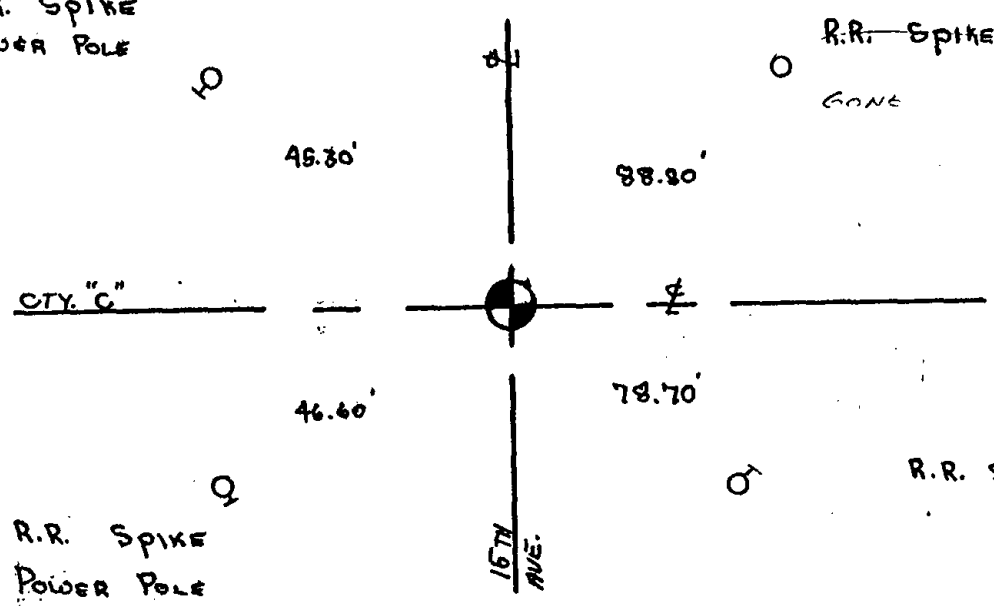
Registered Land Surveyor

DATE: _____

TIE SKETCH

(Show at least four ties)

R.R. SPIKE
POWER POLE



R.R. SPIKE — OAK
GONE

R.R. SPIKE
POWER POLE

R.R. SPIKE S' JACK PINE / 67

R.R. SPIKE in Power Pole



45.30'

C.T.H. "C"

33.81'

3/4" rod in approx. ditch line

53.85'

46.60'

West edge of buried cable Sign Post

R.R. SPIKE in Power Pole

16th Ave.

Map was updated on 4-12-84 SS-DK

OK 11-28-88

new tie. 3-21-90 Ken Carlson