

PUBLIC LAND SURVEY MONUMENT RECORD

TYPE OF MONUMENT: HARRISON
 ADAMS COUNTY COORDINATES, NAD 83 (2005)

N. 269019.787

E. 504249.208

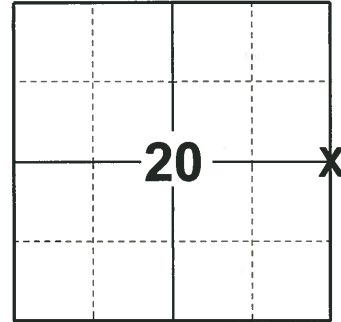
ELEVATION- DATUM

FIELD WORK DATE: 10/24/2019

BASIS FOR MONUMENT LOCATION

1973 - PLS 878 SET ON A STRAIGHT LINE EQUIDISTANT BETWEEN SECTION CORNERS. DID NOT EXCAVATE BECAUSE OF CUT AREA IN ROAD AND ANYTHING THERE WOULD BE DESTROYED.

2019 - PLS 2675 FOUND A RAIL ROAD SPIKE 4" BELOW THE ROAD SURFACE AND 1 WITNESS TREE. REMOVED THE RAIL ROAD SPIKE AND FOUND A HARRISON MONUMENT 18" BELOW. THE MONUMENT AGREES WITH THE EXISTING WITNESS TREE. ACCEPTED THE HARRISON MONUMENT AS THE CORNER LOCATION. SET 4 NEW TIES AND MEASURED THE TIES AND WITNESS TREE.



LOCATION
 (INDICATE CORNER BY "X")

SEAL:



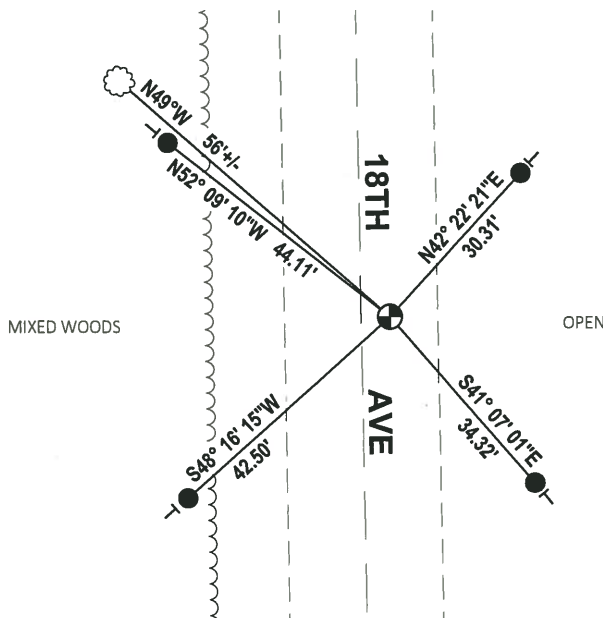
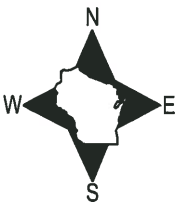
DATA SHOWN HERE ON THIS TIE SHEET IS CORRECT AND COMPLETE TO THE BEST OF MY KNOWLEDGE AND BELIEF.

PROFESSIONAL LAND SURVEYOR

DATE 11/25/19

- TIE SKETCH

NOTE: THE CORNER FALLS 5± WEST OF THE CENTERLINE OF 18TH AVE.



- SET 3/4" x 18" IRON REBAR, 1.50#/FT
- ⊕ FOUND HARRISON MONUMENT
- ⊥ VINYL "T" POST
- ☼ WITNESS TREE

ADAMS COUNTY

Survey Monument Record

TYPE OF MONUMENT: Harrison standard RR S&K

STATE PLANE COORDINATES: N _____

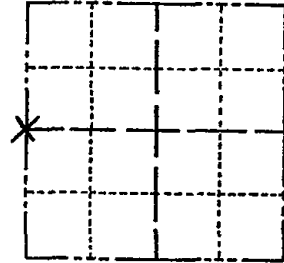
E _____

ELEVATION — M.S.L. DATUM: _____

THETA ANGLE: _____

FIELD BOOK: 108 PAGE 57

CORNER NO. 290
SECTION 21
TOWN 19
RANGE 5



LOCATION
(Indicated by 'X')

SEAL:

BASIS FOR MONUMENT LOCATION

(Use reverse side if necessary)

Show info such as: History of corner, with reference to Vol. and pg, dates, surveyor; exact description of monument replaced; if location computed, by taped or EDM traverse; landowner remarks, etc.

Set on a straight line equidistant between section corners.

Did not excavate because of cut area in road, and anything there would be destroyed.



Ok 3-21-84 SS

- OK 3-20-79 AN-SS
- " 1-29-88 SS
- 2 NEW TIES 9-13-89 KZ-SS
- 2 NEW TIES 2-14-94 CR-JG
- OK 1-25-99 - JG

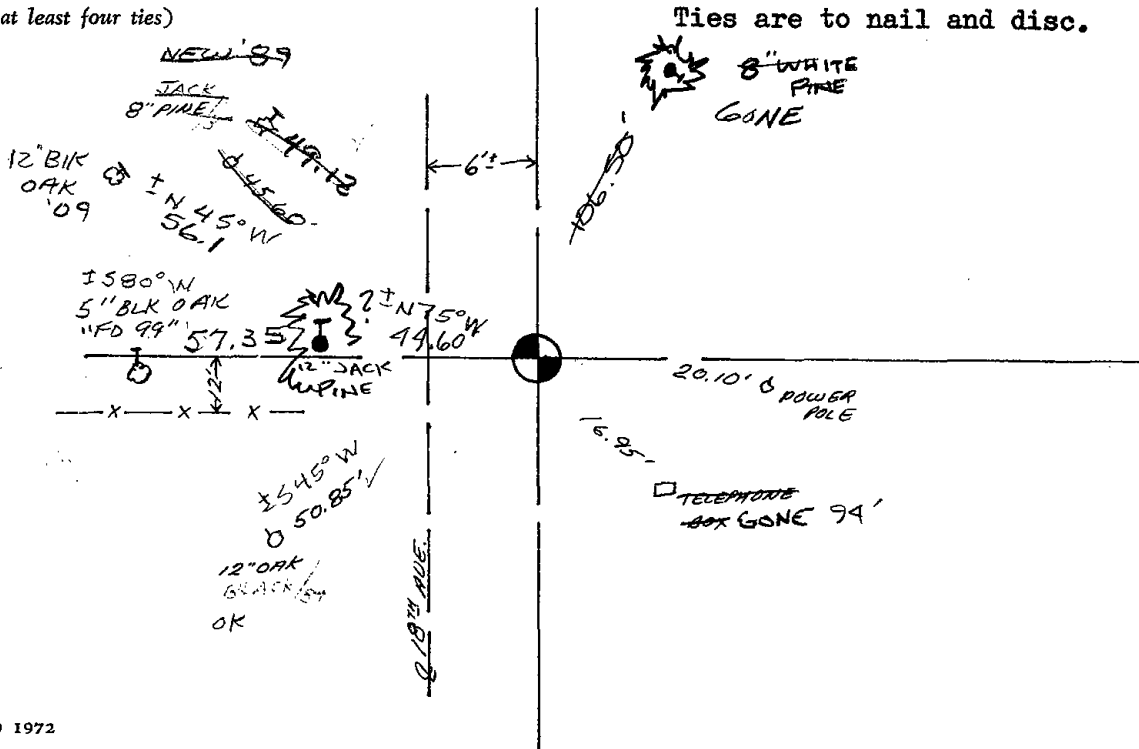
CERTIFIED CORRECT:

Anthony B. Kiedrowski
Registered Land Surveyor

DATE: 9/18/73

TIE SKETCH 1-GONE 4-LEFT 12-23-08-JG
1 New Tie 4-7-09 SS

(Show at least four ties)



Ties are to nail and disc.