

## PUBLIC LAND SURVEY MONUMENT RECORD

TYPE OF MONUMENT: HARRISON (BROKEN-TOP)  
 ADAMS COUNTY COORDINATES, NAD 83 (2005)

N. 269012.522

E. 514854.081

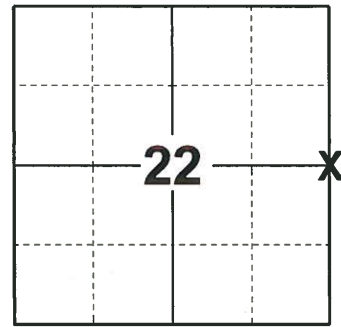
ELEVATION- \_\_\_\_\_ DATUM \_\_\_\_\_

FIELD WORK DATE: 10/23/2019

### BASIS FOR MONUMENT LOCATION

1977 -PLS 878 RAN EDM/T2 TRAVERSE ALONG WEST SIDE OF SECTION 23 AND TO ADJOINING SECTION CORNERS TO DETERMINE SEARCH AREA FOR INVESTIGATION. DID NOT EXCAVATE BECAUSE SEARCH AREA FALLS IN LARGE CUT SECTION OF ROAD. COULD FIND NO EVIDENCE OF THE ORIGINAL BEARING TREES OR ANY OTHER ACCESSORY MONUMENTS. SET CORNER BY SINGLE PROPORTIONATE MEASURE ON LINE BETWEEN ADJACENT SECTION CORNERS. SET HARRISON MONUMENT ON 4-3-1977.

2019 - PLS 2675 FOUND A HARRISON MONUMENT WITH A BROKEN-TOP 13" BELOW THE ROAD SURFACE, 1 TIE AND 1 WITNESS TREE. THE MONUMENT AGREES WITH THE EXISTING TIE AND WITNESS TREE. ACCEPTED THE HARRISON MONUMENT WITH A BROKEN-TOP AS THE CORNER LOCATION. SET 3 NEW TIES AND MEASURED TO THE TIES AND WITNESS TREE.



LOCATION  
(INDICATE CORNER BY "X")

SEAL:



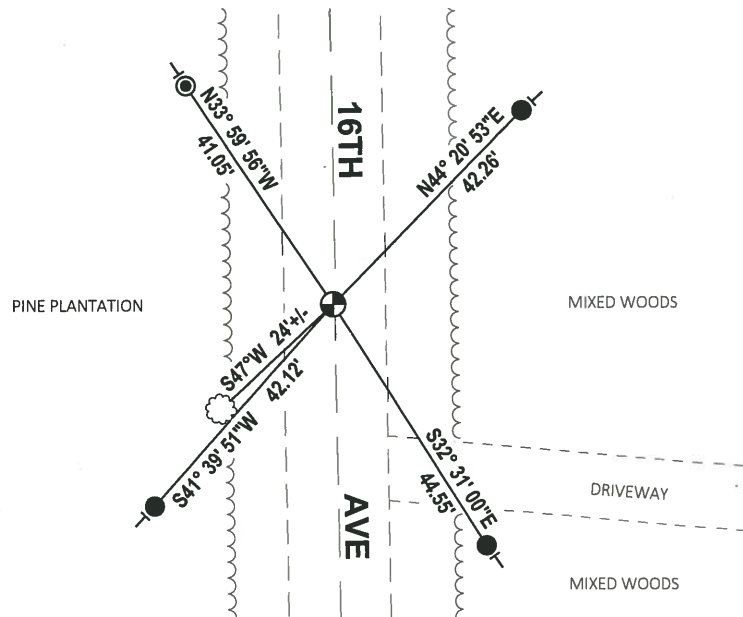
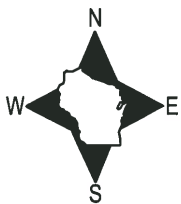
DATA SHOWN HERE ON THIS TIE SHEET IS CORRECT AND COMPLETE TO THE BEST OF MY KNOWLEDGE AND BELIEF.

PROFESSIONAL LAND SURVEYOR

DATE 11/25/19

### - TIE SKETCH

NOTE: THE CORNER FALLS 0.5' ± WEST OF THE CENTERLINE OF 16TH AVE.



- SET 3/4" x 18" IRON REBAR, 1.50#/FT
- ⊙ FOUND 1-1/4" IRON ROD
- ⊕ FOUND HARRISON MONUMENT (BROKEN-TOP)
- VINYL "T" POST
- ☼ WITNESS TREE

**ADAMS COUNTY**

**Survey Monument Record**

TYPE OF MONUMENT: Harrison

STATE PLANE COORDINATES: N \_\_\_\_\_

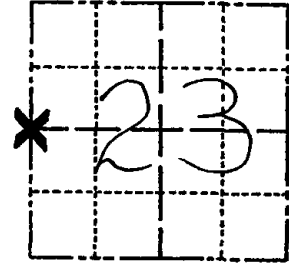
E \_\_\_\_\_

ELEVATION — M.S.L. DATUM: \_\_\_\_\_

THETA ANGLE: \_\_\_\_\_

FIELD BOOK: 54 PAGE 5  
101 72

CORNER NO. 78  
 SECTION 23  
 TOWN 19  
 RANGE 5



LOCATION  
(Indicated by 'X')

**BASIS FOR MONUMENT LOCATION**

(Use reverse side if necessary)

Show info such as: History of corner, with reference to Vol. and pg, dates, surveyor; exact description of monument replaced; if location computed, by taped or EDM traverse; landowner remarks, etc.

Ran EDM/T2 traverse along West side of Section 23 and to adjoining section corners to determine search area for investigation.

Did not excavate because search area falls in large cut section of road. Could find no evidence of the original bearing trees or any other accessory monuments.

Set corner by single proportionate measure on line between adjacent section corners.

Set Harrison on 4-13-77.

OK 2-25-94 CR-36  
 COR OK RN-DA-11-29-78  
 OK-7-17-84 DK-SS  
 " 11-29-88 SS

SEAL:



CERTIFIED CORRECT:

*Anthony B. Kiedrowski*  
 Registered Land Surveyor

DATE: 9-6-77

**TIE SKETCH** 2-GONE, 3-NEW, 2-10-98-J6 MON. BROKEN - FD 13" BELOW SURFACE  
 OK, 1-02-03-J6 2 NEW TIES 4-7-09 SS

(Show at least four ties)

**NOTE**

Ties in trees to nail in disc.

