

## PUBLIC LAND SURVEY MONUMENT RECORD

TYPE OF MONUMENT: HARRISON  
 ADAMS COUNTY COORDINATES, NAD 83 (2005)

N. 269021.671

E. 520199.468

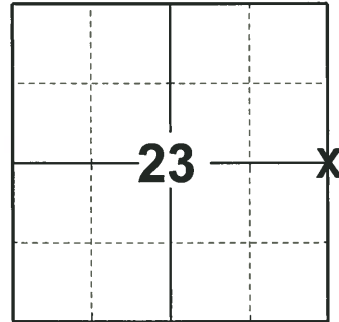
ELEVATION- \_\_\_\_\_ DATUM \_\_\_\_\_

FIELD WORK DATE: 10/22/2019

### BASIS FOR MONUMENT LOCATION

1973 - PLS 878 SET ON A STRAIGHT LINE EQUIDISTANT BETWEEN SECTION CORNERS. DID NOT EXCAVATE HERE BECAUSE ROAD WAS IN A CUT AREA.

2019 - PLS 2675 FOUND A HARRISON MONUMENT 3" BELOW THE ROAD SURFACE, 2 WITNESSES AND 2 PROPERTY IRONS. THE MONUMENT AGREES WITH THE EXISTING WITNESSES. ACCEPTED THE HARRISON MONUMENT AS THE CORNER LOCATION. SET 2 NEW TIES AND MEASURED TO THE TIES, PROPERTY IRONS AND WITNESSES.



**LOCATION**  
 (INDICATE CORNER BY "X")

SEAL:



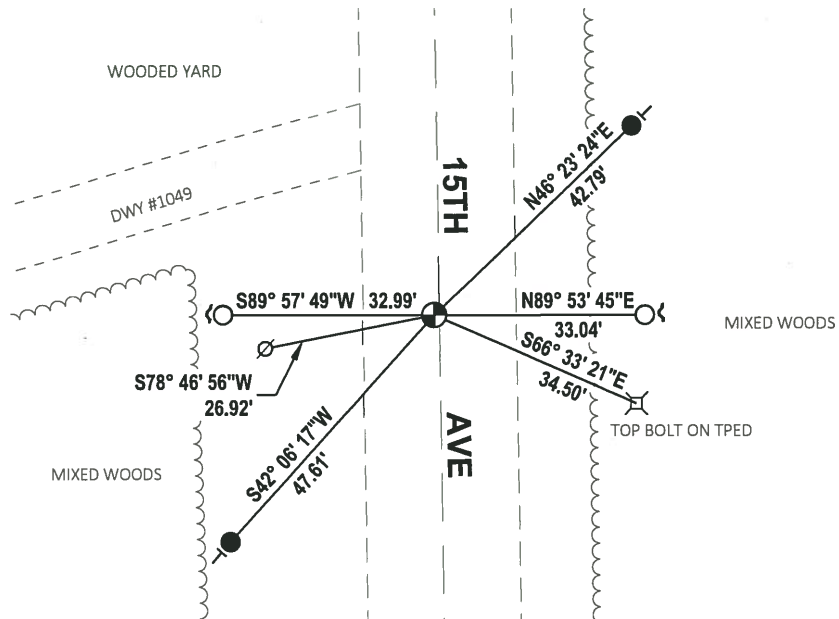
DATA SHOWN HERE ON THIS TIE SHEET IS CORRECT AND COMPLETE TO THE BEST OF MY KNOWLEDGE AND BELIEF.

PROFESSIONAL LAND SURVEYOR

DATE 11/25/19

### - TIE SKETCH

NOTE: THE CORNER FALLS 1' ± WEST OF THE CENTERLINE OF 15TH AVE.



- SET 3/4" x 18" IRON REBAR, 1.50#/FT
- FOUND 3/4" IRON ROD
- ⊕ FOUND HARRISON MONUMENT
- ∅ WITNESS POWER POLE
- ┘ STEEL FENCE POST
- VINYL "T" POST

# ADAMS COUNTY

## Survey Monument Record

TYPE OF MONUMENT: 30" HARRISON

STATE PLANE COORDINATES: N \_\_\_\_\_  
E \_\_\_\_\_

ELEVATION — M.S.L. DATUM: \_\_\_\_\_

THETA ANGLE: \_\_\_\_\_

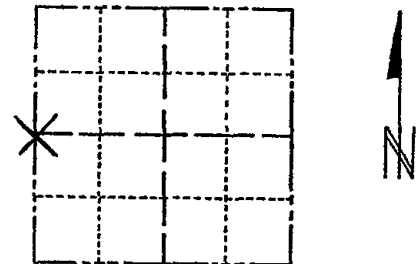
FIELD BOOK: 108 PAGE 102

CORNER NO. 317

SECTION 24

TOWN 19

RANGE 5



LOCATION  
(Indicated by 'X')

SEAL:



### BASIS FOR MONUMENT LOCATION

(Use reverse side if necessary)

Show info such as: History of corner, with reference to Vol. and pg, dates, surveyor; exact description of monument replaced; if location computed, by taped or EDM traverse; landowner remarks, etc.

Set on a straight line equidistant between section corners. Did not excavate here because road was in a cut area.

CERTIFIED CORRECT:

*Anthony B. Kiedrowski*  
Registered Land Surveyor

DATE: 12-19-73

- OK 1 MAR 94 CR-JG
- COR OK 11-30-78 RU-DA
- OK 4-12-84 SS-DK
- OK 1-28-85 SS
- OK 3-21-90 KEN CARLSON
- 2-NEW, MON. OK, 2-10-98-JG
- 1-GONE, 1-NEW, MON. OK 1-02-03-JG

### TIE SKETCH 1-14-09 SS

(Show at least four ties)

