

19
SECTION

19
TOWN

05
RANGE

ADAMS COUNTY

COUNTY CORNER NO: 83

ROMPORTOL ID: 41905190000

PUBLIC LAND SURVEY MONUMENT RECORD

TYPE OF MONUMENT: HARRISON (BROKEN-TOP)
ADAMS COUNTY COORDINATES, NAD 83 (2005)

N. 266369.299

E. 498975.854

ELEVATION: DATUM

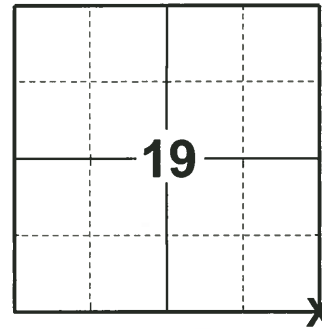
FIELD WORK DATE: 12/19/2019

BASIS FOR MONUMENT LOCATION

1977 - PLS 878 EXCAVATED WITH A BACKHOE AND FOUND A 2"X8"X16" SOFT SANDSTONE AND SET A HARRISON ON TOP OF IT.

2010 - PLS 1473 FOUND THE HARRISON MONUMENT BURIED 1.8' UNDER THE SURFACE, SET 5" GALVANIZED LANDSCAPING SPIKE OVER THE TOP OF THE MONUMENT.

2019 - PLS 2675 FOUND SPIKE IN THE ROAD SURFACE, REMOVED, AND FOUND HARRISON (BROKEN-TOP) 24" BELOW, 2 TIES, AND 2 WITNESS TREES. 1 NOT ON CURRENT TIE-SHEET. THE MONUMENT AGREES WITH BOTH TIES AND WITNESS TREE ON THE CURRENT TIE SHEET. ACCEPTED THE HARRISON (BROKEN-TOP) AS THE CORNER LOCATION. SET 2 NEW TIES AND MEASURED TO THE EXISTING TIES AND WITNESSES.



LOCATION
(INDICATE CORNER BY "X")

SEAL:



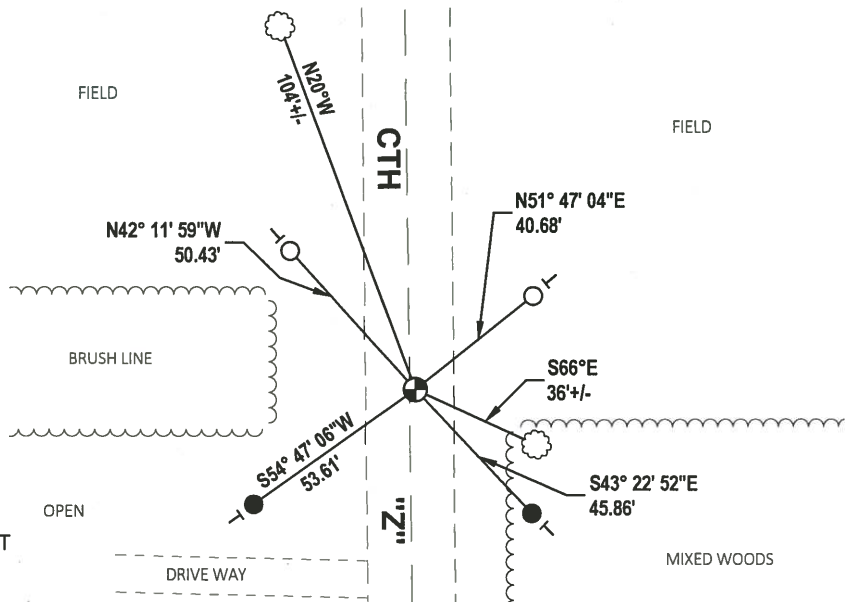
DATA SHOWN HERE ON THIS TIE SHEET IS CORRECT AND COMPLETE TO THE BEST OF MY KNOWLEDGE AND BELIEF.

PROFESSIONAL LAND SURVEYOR

DATE 1/9/2020

- TIE SKETCH

NOTE: THE CORNER LANDS 1.5'± EAST OF CENTERLINE OF CTH "Z"



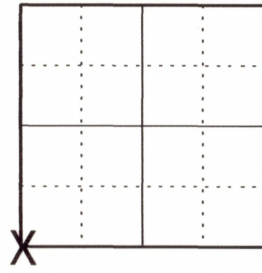
- SET 3/4" x 18" IRON REBAR, 1.50#/FT
- FOUND 3/4" IRON ROD
- ⊕ FOUND HARRISON (BROKEN-TOP) MONUMENT
- ┆ VINYL "T" POST
- ☼ WITNESS TREE

U.S PUBLIC LAND SURVEY MONUMENT RECORD ADAMS COUNTY, WISCONSIN

CORNER NO. 83
SECTION 20
TOWN 19 N
RANGE 5 E

TYPE OF MONUMENT: 5" GALVANIZED LANDSCAPING SPIKE OVER HARRISON MON.
ADAMS COUNTY COORDINATES:
NORTH: 266369.25'
EAST: 498975.86'

ELEVATION _ MSL DATUM: NOT APPLICABLE
THETA ANGLE: NOT APPLICABLE
FIELD BOOK:
DRAWN BY: DANIEL MARKS



LOCATION

BASIS FOR MONUMENT LOCATION

On September 6, 1977 Anthony Kiedrowski excavated with a backhoe and found a 2" x 8" x 6" soft sandstone and set a Harrison monument on top of it. Corner was buried 1.8' under the surface so I set a 5" galvanized landscaping spike over the top of the monument.



SEAL

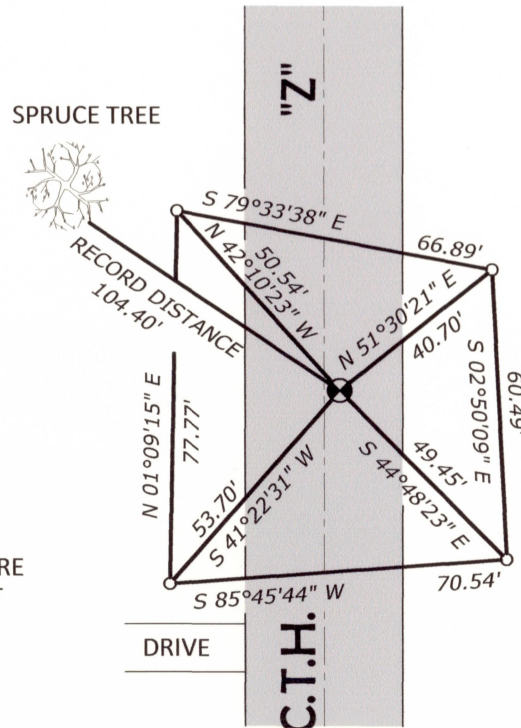


DATA SHOWN HEREON CERTIFIED CORRECT:

Daniel Marks

REGISTERED LAND SURVEYOR
DATE: August 1, 2010

TIE SKETCH: No Scale



MAINTENANCE RECORD

DATE	INIT.	REMARKS

ALL WITNESS TIES ARE
3/4" IRON RODS SET