

20
SECTION

19
TOWN

05
RANGE

ADAMS COUNTY

COUNTY CORNER NO: 84
ROMPORTOL ID: 41905200020

PUBLIC LAND SURVEY MONUMENT RECORD

TYPE OF MONUMENT: HARRISON
ADAMS COUNTY COORDINATES, NAD 83 (2005)

N. 266377.949

E. 501630.287

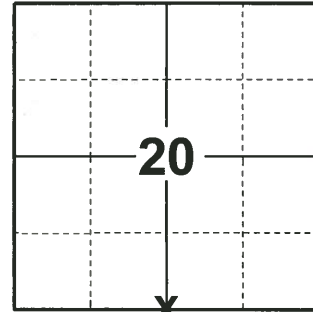
ELEVATION- - - - - DATUM - - - - -

FIELD WORK DATE: 11/20/2019

BASIS FOR MONUMENT LOCATION

1982 - PLS 1444 HARRISON SET EQUIDISTANT AND ON LINE BETWEEN SECTION CORNERS. NO OTHER EVIDENCE FOUND.

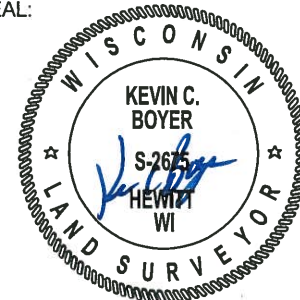
2019 - PLS 2675 FOUND HARRISON MONUMENT 2"± ABOVE THE GROUND AND 3 WITNESS TREES. THE MONUMENT AGREES WITH ALL 3 WITNESS TREES. ACCEPTED THE HARRISON AS THE CORNER LOCATION. SET 4 NEW TIES AND MEASURED TO THE EXISTING WITNESSES.



LOCATION

(INDICATE CORNER BY "X")

SEAL:

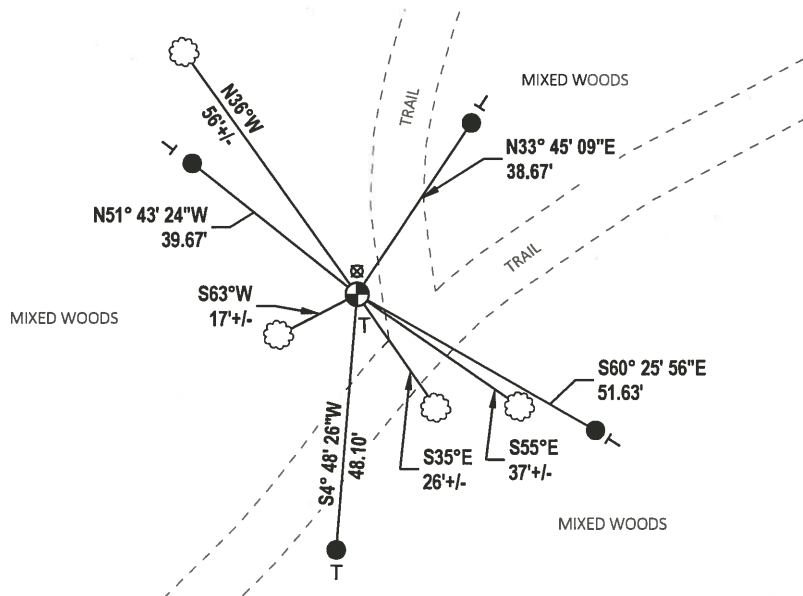
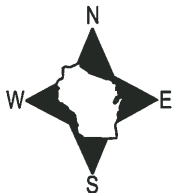


DATA SHOWN HERE ON THIS TIE SHEET IS CORRECT AND COMPLETE TO THE BEST OF MY KNOWLEDGE AND BELIEF.

PROFESSIONAL LAND SURVEYOR

DATE 1/9/2020

- TIE SKETCH

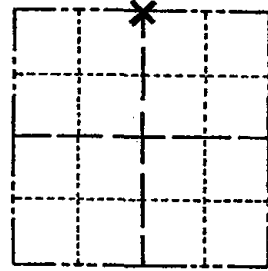


- SET 3/4" x 18" IRON REBAR, 1.50#/FT
- ⊙ FOUND HARRISON MONUMENT
- ⊠ WELL POINT
- VINYL "T" POST
- ☁ WITNESS TREE

Government Land Corner Certificate

ADAMS County
 TYPE OF MONUMENT: HARRISON
 STATE PLANE COORDINATES: N _____
 E _____
 ELEVATION — M.S.L. DATUM: _____
 THETA ANGLE: _____
 FIELD BOOK: 88 PAGE 110
 DRAWN BY: LANCE HABECK

CORNER NO. 84
 SECTION 29
 TOWN 19
 RANGE 5



LOCATION
(Indicated by 'X')

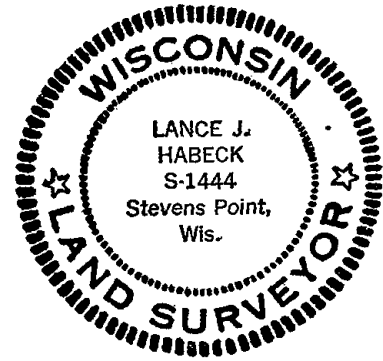
BASIS FOR MONUMENT LOCATION

Show info such as: History of corner, with reference to Vol. and pg., dates, surveyor; exact description of monument replaced; if location computed, by taped or EDM traverse; landowner remarks, etc. (Use reverse side if necessary)

This corner set equidistant and on line between Section corners. No other evidence found.

1 gone 1 new 4-2-84 SS-DK
 OK, 2-21-94 JG-CR
 OK 2-8-99-JG
 1-NEW, 12-23-03-JG
 1 NEW 4-7-09 SS

SEAL:



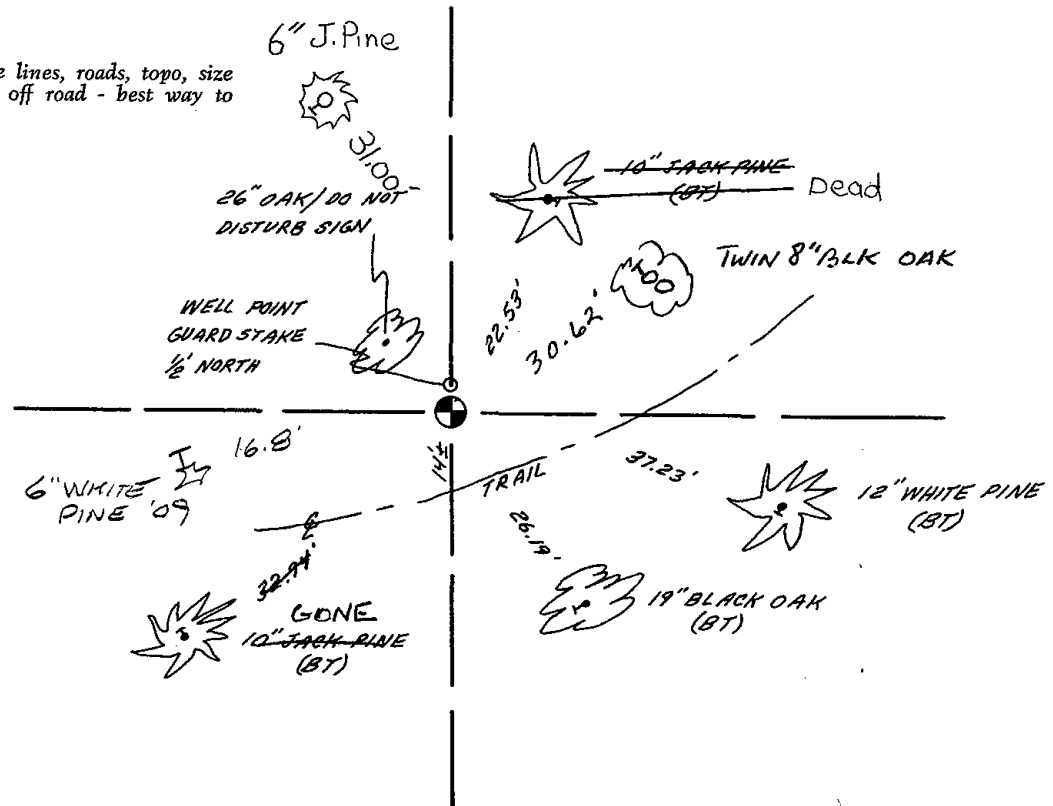
DATA SHOWN HERE ON CERTIFIED CORRECT:

Lance J. Habeck
Registered Land Surveyor

DATE: 4/14/82

TIE SKETCH

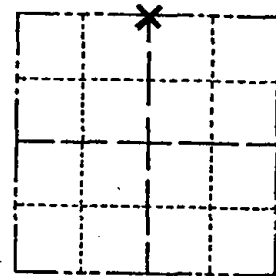
Show at least four ties, also fence lines, roads, topo, size and type of witness trees and if off road - best way to arrive at corner.



Government Land Corner Certificate

ADAMS County
 TYPE OF MONUMENT: HARRISON
 STATE PLANE COORDINATES: N _____
 E _____
 ELEVATION — M.S.L. DATUM: _____
 THETA ANGLE: _____
 FIELD BOOK: 88 PAGE 110
 DRAWN BY: LANCE HABECK

CORNER NO. 84
 SECTION 29
 TOWN 19
 RANGE 5



LOCATION
(Indicated by 'X')



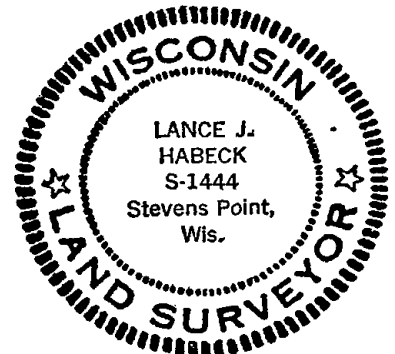
BASIS FOR MONUMENT LOCATION

Show info such as: History of corner, with reference to Vol. and pg., dates, surveyor; exact description of monument replaced; if location computed, by taped or EDM traverse; landowner remarks, etc. (Use reverse side if necessary)

This corner set equidistant and on line between Section corners. No other evidence found.

1 gone 1 new 4-2-84 SS-DK
 OK, 2-21-94 JG-CR
 OK 2-8-99 - JG
 NEW TIES 4-14-00 - SH-MC

SEAL:



DATA SHOWN HERE ON
CERTIFIED CORRECT:

Lance J. Habeck
 Registered Land Surveyor

DATE: 4/14/82

TIE SKETCH

Show at least four ties, also fence lines, roads, topo, size and type of witness trees and if off road - best way to arrive at corner.

