

## PUBLIC LAND SURVEY MONUMENT RECORD

TYPE OF MONUMENT: HARRISON  
 ADAMS COUNTY COORDINATES, NAD 83 (2005)

N. 266388.764

E. 504284.042

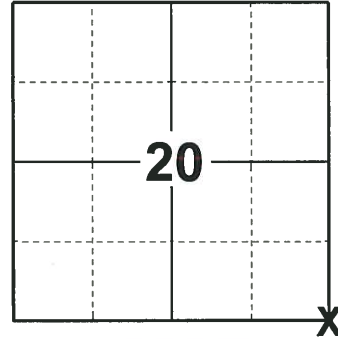
ELEVATION: \_\_\_\_\_ DATUM \_\_\_\_\_

FIELD WORK DATE: 10/24/2019

### BASIS FOR MONUMENT LOCATION

1973 - PLS 878 FOUND AND REPLACED OLD 3/4" IRON PIPE AT THE LOCATION. A TRAVERSE OF THE ENTIRE SECTION INDICATES THAT THE PIPE IS CORRECT IN LOCATION. REPLACED 3/4" IRON PIPE WITH HARRISON MONUMENT.

2019 - PLS 2675 FOUND A HARRISON MONUMENT 8" BELOW THE GROUND SURFACE AND 1 WITNESS TREE. THE MONUMENT AGREES WITH THE EXISTING WITNESS TREE. ACCEPTED THE HARRISON MONUMENT AS THE CORNER LOCATION. SET 4 NEW TIES AND MEASURED THE TIES AND WITNESS TREE.



**LOCATION**

(INDICATE CORNER BY "X")

SEAL:



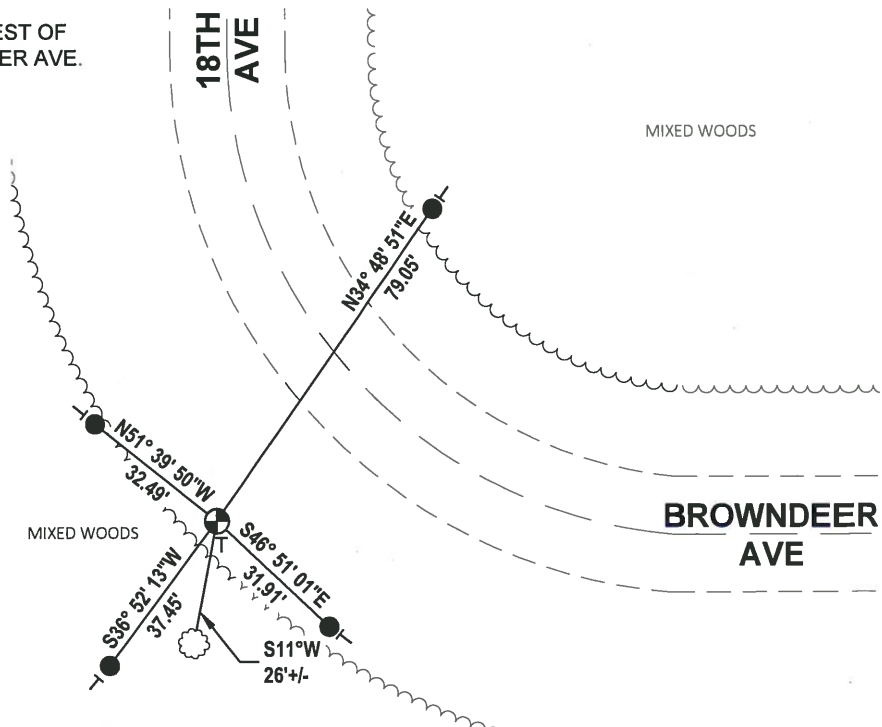
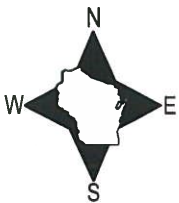
DATA SHOWN HERE ON THIS TIE SHEET IS CORRECT AND COMPLETE TO THE BEST OF MY KNOWLEDGE AND BELIEF.

PROFESSIONAL LAND SURVEYOR

DATE 11/25/19

### - TIE SKETCH

NOTE: THE CORNER FALLS 42' ± SOUTHWEST OF THE CENTERLINE OF 18TH AVE/BROWNDEER AVE.



- SET 3/4" x 18" IRON REBAR, 1.50#/FT
- ⊕ FOUND HARRISON MONUMENT
- ┌ VINYL "T" POST
- ☉ WITNESS TREE

ADAMS COUNTY

CORNER NO. 292

Survey Monument Record

SECTION 21

TYPE OF MONUMENT: Harrison standard

TOWN 19

STATE PLANE COORDINATES: N \_\_\_\_\_

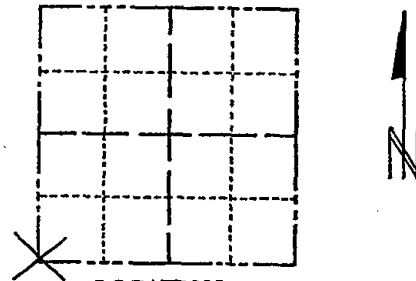
RANGE 5

E \_\_\_\_\_

ELEVATION — M.S.L. DATUM: \_\_\_\_\_

THETA ANGLE: \_\_\_\_\_

FIELD BOOK: 108 PAGE 50



LOCATION  
(Indicated by 'X')

SEAL:

BASIS FOR MONUMENT LOCATION

(Use reverse side if necessary)

Show info such as: History of corner, with reference to Vol. and pg, dates, surveyor; exact description of monument replaced; if location computed, by taped or EDM traverse; landowner remarks, etc.

Found and replaced <sup>old</sup> a 3/4" iron pipe at the location. A traverse of the entire section indicates that the pipe is correct in location.



- OK 3-20-79 PN-SS
- Ok 3-21-84 SS
- 3 NEW DES 9-18-89 KZ-SS
- OK 2-14-94 CR-JG

CERTIFIED CORRECT:

*Anthony B. Kiedrowski*  
Registered Land Surveyor  
DATE: 9/18/73

TIE SKETCH <sup>OK, 1-25-99-JG</sup>  
<sup>1-LOME 12-23-03-JG</sup>  
(Show at least four ties) OK 4-7-09 SS

Ties are to nail and disc.

