

PUBLIC LAND SURVEY MONUMENT RECORD

TYPE OF MONUMENT: HARRISON
 ADAMS COUNTY COORDINATES, NAD 83 (2005)

N. 266365.423

E. 514898.255

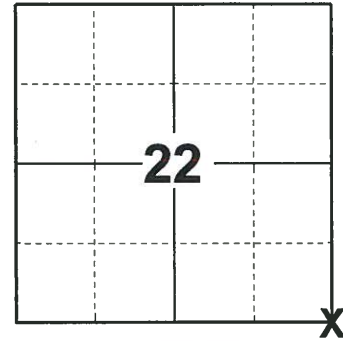
ELEVATION- - - - - DATUM - - - - -

FIELD WORK DATE: 10/23/2019

BASIS FOR MONUMENT LOCATION

1977 - PLS 878 RAND EDM/T2 TRAVERSE ALONG WEST SIDE OF SECTION 23 AND TO ADJOINING SECTION CORNERS TO DETERMINE SEARCH AREA FOR INVESTIGATION. EXCAVATION WITH BACKHOE BY A.B. KIEDROWSKI, ADAMS COUNTY SURVEYOR, YIELDED 8"X8"X16" HIGH SANDSTONE AT 75 FEET FROM STUMP OF BEARING TREE TO SOUTHEAST. LOWERED STONE AND SET HARRISON ABOVE ON 4-12-1977. STONE AND BEARING TREE BY M.C. SMITH, 1/178, 1913.

2019 - PLS 2675 FOUND A HARRISON MONUMENT 6" BELOW THE ROAD SURFACE, 1 TIE AND 1 WITNESS TREE STUMP. THE MONUMENT AGREES WITH THE EXISTING TIE AND WITNESS TREE STUMP. ACCEPTED THE HARRISON MONUMENT AS THE CORNER LOCATION. SET 4 NEW TIES AND MEASURED TO THE TIES AND WITNESS TREE STUMP.



LOCATION
 (INDICATE CORNER BY "X")

SEAL:



DATA SHOWN HERE ON THIS TIE SHEET IS CORRECT AND COMPLETE TO THE BEST OF MY KNOWLEDGE AND BELIEF.

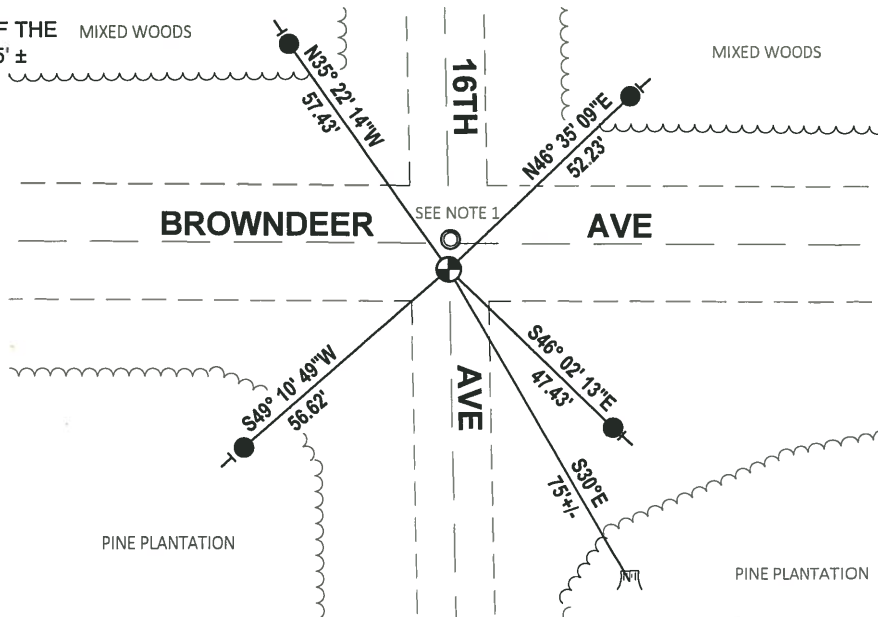
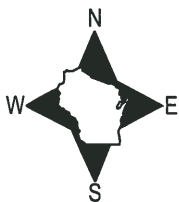
PROFESSIONAL LAND SURVEYOR

DATE 11/25/19

TIE SKETCH

NOTE 1: THE 1-1/4" O.D. IRON PIPE SET AT S.T. MULLENS CORNER LOCATION FALLS N3° 05' 44"E, 6.19' FROM THE CORNER LOCATION.

NOTE 2: THE CORNER FALLS 5' ± SOUTH OF THE CENTERLINE OF BROWNDEER AVE AND 0.5' ± WEST OF THE CENTERLINE OF 16TH AVE.



- SET 3/4" x 18" IRON REBAR, 1.50#/FT
- FOUND 1-1/4" O.D. IRON PIPE
- ⊙ FOUND HARRISON MONUMENT
- VINYL "T" POST
- ▭ WITNESS TREE STUMP

ADAMS COUNTY

Survey Monument Record

TYPE OF MONUMENT: Harrison

STATE PLANE COORDINATES: N _____

E _____

ELEVATION — M.S.L. DATUM: _____

THETA ANGLE: _____

FIELD BOOK: 101 PAGE 72
54 4

BASIS FOR MONUMENT LOCATION

(Use reverse side if necessary)

Show info such as: History of corner, with reference to Vol. and pg. dates, surveyor; exact description of monument replaced; if location computed, by taped or EDM traverse; landowner remarks, etc.

Ran EDM/T2 traverse along West side of Section 23 and to adjoining section corners to determine search area for investigation.

Excavation with backhoe by Anthony Kiedrowski, Adams County Surveyor, yielded 8"x8"x16" high sandstone at 75 feet from stump of bearing tree to Southeast.

Lowered Stone and set Harrison above on 4-12-77. Stone and BT by M.C.Smith, 1/178, 1913

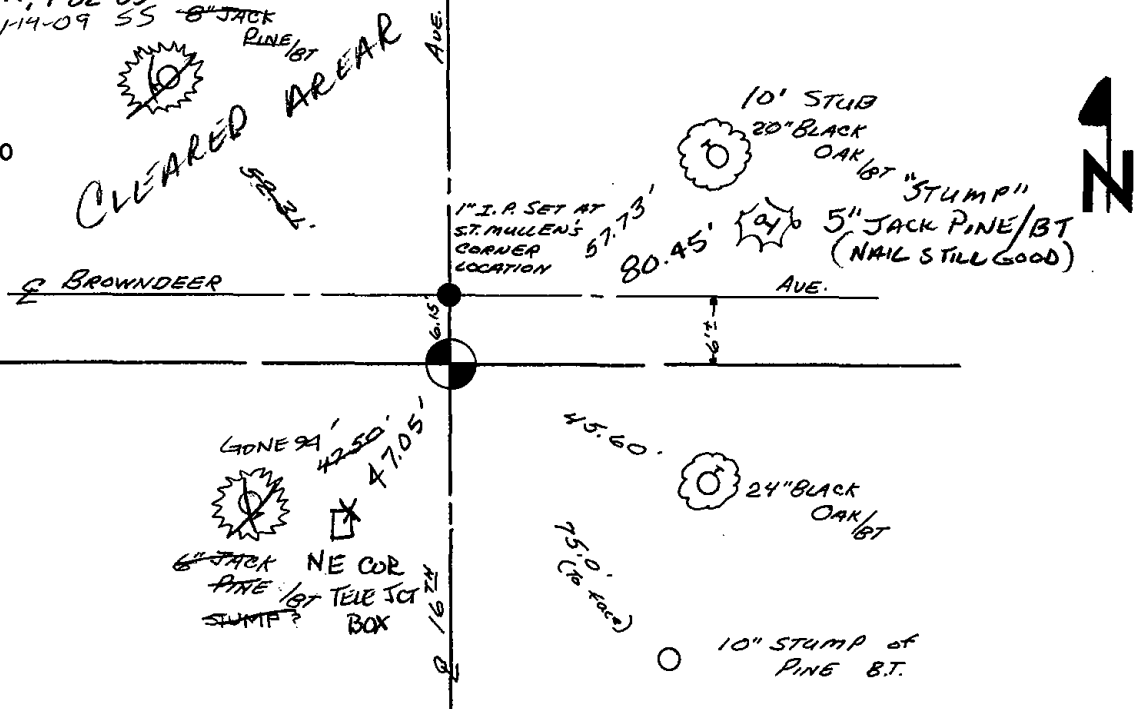
Cor. OK 11-29-78 RN-DA
OK 3-21-84 SS
OK 11-28-88 SS
OK 2-14-94 CR-JG

TIE SKETCH 2-GONE, 2-NEW 2-10-98-JG

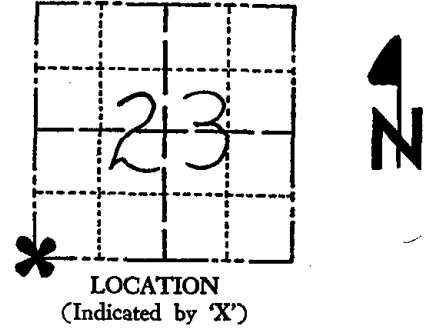
(Show at least four ties) DK, 1-02-03-JG
1-14-09 SS 8" JACK

NOTE

Ties in trees to nail in disc.



CORNER NO. 89
SECTION 23
TOWN 19
RANGE 5



SEAL: LOCATION (Indicated by 'X')



CERTIFIED CORRECT:
Anthony B. Kiedrowski
Registered Land Surveyor
DATE: 9-6-77