

## PUBLIC LAND SURVEY MONUMENT RECORD

TYPE OF MONUMENT: HARRISON  
 ADAMS COUNTY COORDINATES, NAD 83 (2005)

N. 266369.724

E. 520237.279

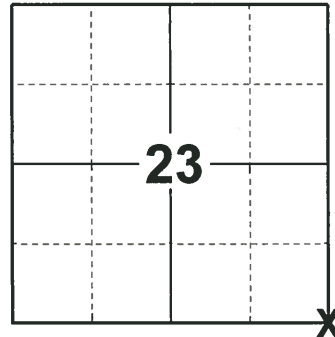
ELEVATION- \_\_\_\_\_ DATUM \_\_\_\_\_

FIELD WORK DATE: 10/22/2019

### BASIS FOR MONUMENT LOCATION

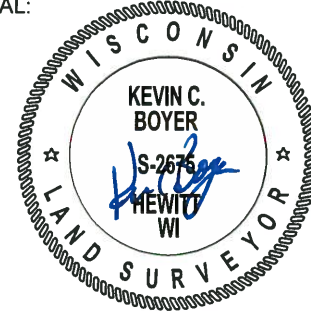
1971 - S 981 FOUND A NAIL AND SET A HARRISON MONUMENT.

2019 - PLS 2675 FOUND A HARRISON MONUMENT 6" BELOW THE ROAD SURFACE AND 1 WITNESS. THE MONUMENT AGREES WITH THE EXISTING WITNESS. ACCEPTED THE HARRISON MONUMENT AS THE CORNER LOCATION. SET 4 NEW TIES AND MEASURED TO THE TIES AND WITNESS.



**LOCATION**  
 (INDICATE CORNER BY "X")

SEAL:



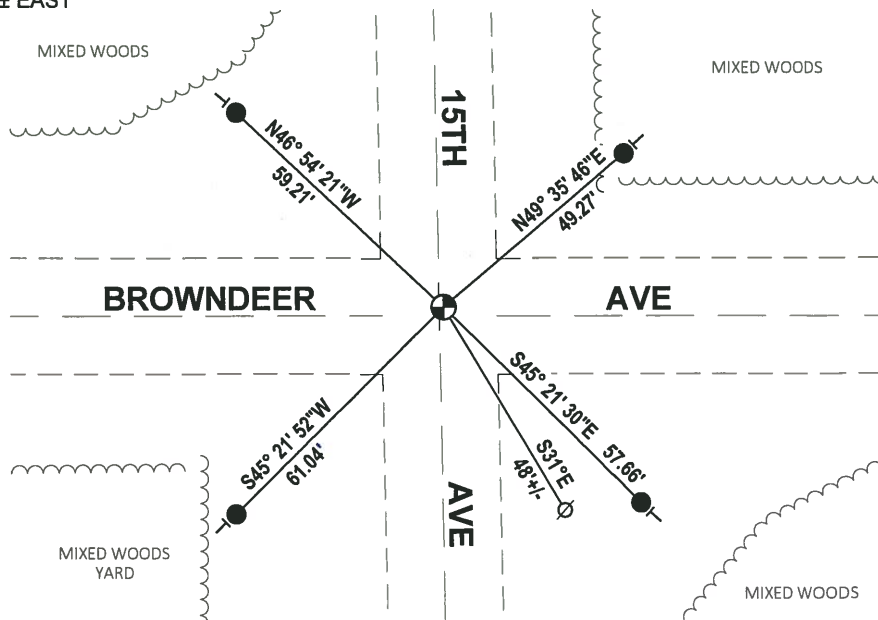
DATA SHOWN HERE ON THIS TIE SHEET IS CORRECT AND COMPLETE TO THE BEST OF MY KNOWLEDGE AND BELIEF.

PROFESSIONAL LAND SURVEYOR

DATE 11/25/19

### - TIE SKETCH -

NOTE: THE CORNER FALLS 2' ± SOUTH OF THE CENTERLINE OF BROWND EER AVE AND 1' ± EAST OF THE CENTERLINE OF 15TH AVE.



- SET 3/4" x 18" IRON REBAR, 1.50#/FT
- ⊕ FOUND HARRISON MONUMENT
- ∅ WITNESS POWER POLE
- | VINYL "T" POST

# ADAMS COUNTY

## Survey Monument Record

TYPE OF MONUMENT: 30" HARRISON

STATE PLANE COORDINATES: N \_\_\_\_\_

E \_\_\_\_\_

ELEVATION — M.S.L. DATUM: \_\_\_\_\_

THETA ANGLE: \_\_\_\_\_

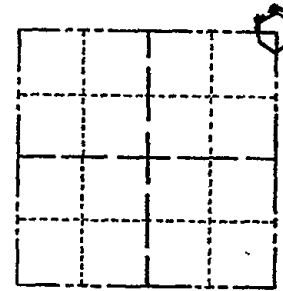
FIELD BOOK: 104 PAGE 34

CORNER NO. 2

SECTION 26

TOWN 19

RANGE 5



LOCATION  
(Indicated by 'X')

SEAL:

### BASIS FOR MONUMENT LOCATION

(Use reverse side if necessary)

Show info such as: History of corner, with reference to Vol. and pg, dates, surveyor; exact description of monument replaced; if location computed, by taped or EDM traverse; landowner remarks, etc.

Found nail set monument July 2, 1971

Sam T. Mullen R.L.S. S-981

COR OK 11-30-78 RN-DA  
 OK 4-12-84 SS-DK  
 OK 1-28-88 SS  
 OK 3-21-90 KEN CARLSON  
 OK 2-14-94 CR-JG  
 OK, 2-10-98 - JG  
 2-GONE, 2-NEW, 1-02-03 - JG  
 1-GONE, 2-NEW 1-28-09 SS

CERTIFIED CORRECT:

Registered Land Surveyor

DATE: \_\_\_\_\_

### TIE SKETCH

(Show at least four ties)

