

29
SECTION

19
TOWN

05
RANGE

ADAMS COUNTY

COUNTY CORNER NO: 96
ROMPORTOL ID: 41905292000

PUBLIC LAND SURVEY MONUMENT RECORD

TYPE OF MONUMENT: HARRISON (BROKEN-TOP)
ADAMS COUNTY COORDINATES, NAD 83 (2005)

N. 263728.226

E. 504314.468

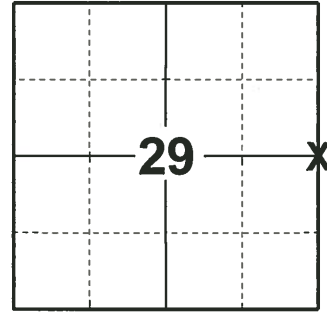
ELEVATION- - - - DATUM - - - -

FIELD WORK DATE: 10/30/2019

BASIS FOR MONUMENT LOCATION

1982 - PLS 1444 THIS CORNER WAS SET ON LINE AND SINGLE PROPORTIONATE MEASURE FROM NOTES BY M.C. SMITH IN VOLUME 1, PAGE 12, ADAMS COUNTY SURVEYOR RECORDS. EXCAVATION BY BACKHOE YIELDED NO EVIDENCE OF THE ORIGINAL CORNER OR ANY RESURVEY MONUMENTS. ALSO, NO ORIGINAL BEARING TREES WERE FOUND.

2019 - PLS 2675 FOUND HARRISON (BROKEN-TOP) MONUMENT 12"± BELOW THE ROAD SURFACE, 1 TIE, AND 2 WITNESSES. THE MONUMENT AGREES WITH THE TIE AND WITNESSES. ACCEPTED THE HARRISON (BROKEN-TOP) MONUMENT AS THE CORNER LOCATION. SET 3 NEW TIES AND MEASURED TO THE EXISTING TIE AND WITNESSES.



LOCATION
(INDICATE CORNER BY "X")

SEAL:



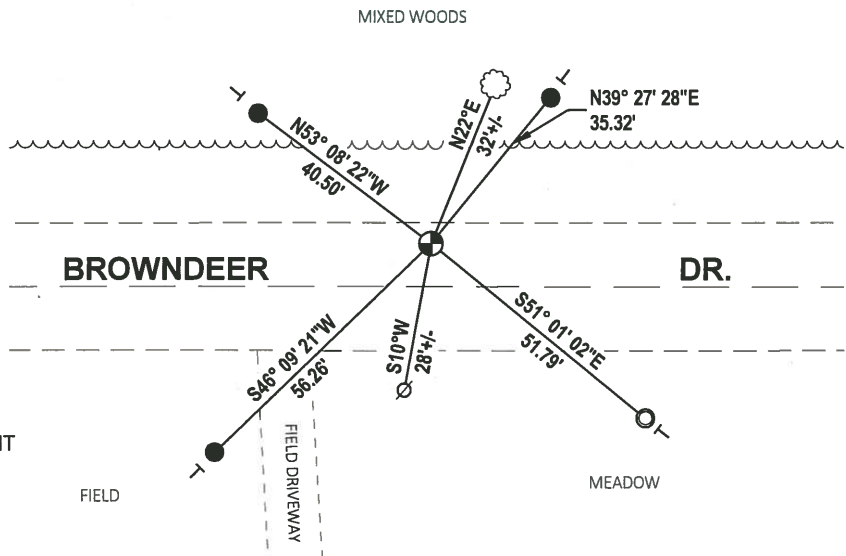
DATA SHOWN HERE ON THIS TIE SHEET IS CORRECT AND COMPLETE TO THE BEST OF MY KNOWLEDGE AND BELIEF.

PROFESSIONAL LAND SURVEYOR

DATE 1/9/2020

TIE SKETCH

NOTE: THE CORNER LANDS 8"± NORTH OF BROWNDEER DR. CENTERLINE.

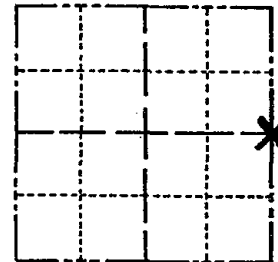


- SET 3/4" x 18" IRON REBAR, 1.50#/FT
- FOUND 1-1/4" O.D. IRON PIPE
- ⊕ FOUND HARRISON (BROKEN-TOP) MONUMENT
- ⊘ WITNESS POWER POLE
- ┊ VINYL "T" POST
- ☼ WITNESS TREE

Government Land Corner Certificate

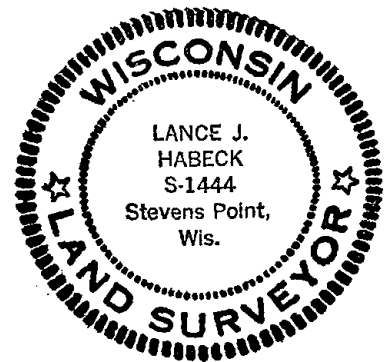
ADAMS County
 TYPE OF MONUMENT: HARRISON
 STATE PLANE COORDINATES: N _____
 E _____
 ELEVATION — M.S.L. DATUM: _____
 THETA ANGLE: _____
 FIELD BOOK: 92 PAGE 43
 DRAWN BY: LANCE HABECK

CORNER NO. 96
 SECTION 29
 TOWN 19
 RANGE 6



LOCATION
(Indicated by 'X')

SEAL:



DATA SHOWN HERE ON
CERTIFIED CORRECT:

Lance J. Habeck
Registered Land Surveyor

DATE: 4/29/82

BASIS FOR MONUMENT LOCATION

Show info such as: History of corner, with reference to Vol. and pg., dates, surveyor; exact description of monument replaced; if location computed, by taped or EDM traverse; landowner remarks, etc. (Use reverse side if necessary)

This corner was set on line and single proportionate measure from notes by M.C. Smith in Volume 1, Page 12, Adams County Surveyor records. Excavation by backhoe yielded no evidence of the original corner or any resurvey monuments. Also, no original bearing trees were found.

Ok 3-21-84 SS

TIE SKETCH

Show at least four ties, also fence lines, roads, topo, size and type of witness trees' and if off road - best way to arrive at corner.

