

PUBLIC LAND SURVEY MONUMENT RECORD

TYPE OF MONUMENT: HARRISON
 ADAMS COUNTY COORDINATES, NAD 83 (2005)

N. 263726.484

E. 509626.307

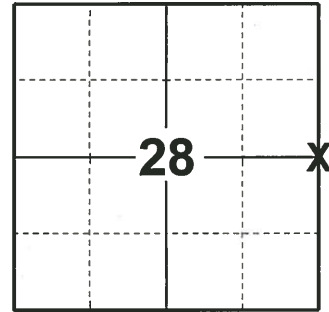
ELEVATION- - - - - DATUM - - - - -

FIELD WORK DATE: 10/30/2019

BASIS FOR MONUMENT LOCATION

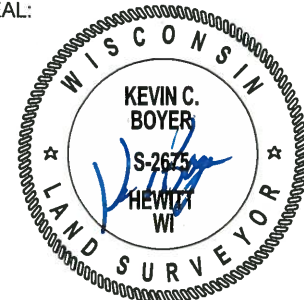
1979 - PLS 1478 SET MONUMENT AT THE INTERSECTION OF THE WEST LINE OF THE SW1/4 (FROM A SURVEY OF FILE IN THE COUNTY SURVEYOR'S OFFICE BY S.T. MULLEN) AND THE CENTERLINE OF BROWNDEER DRIVE. THIS LOCATION BEST MATCHED POSSESSION AND ORIGINAL DISTANCES WITHIN THE SECTION. EXCAVATION WAS NOT MADE DUE TO CUT IN THE ROAD.

2019 - PLS 2675 FOUND HARRISON MONUMENT 8"± BELOW THE ROAD SURFACE, 1 TIE, AND 3 WITNESSES. THE MONUMENT AGREES WITH THE EXISTING TIE AND WITNESSES. ACCEPTED THE HARRISON MONUMENT AS THE CORNER LOCATION. SET 3 NEW TIES AND MEASURED TO THE EXISTING TIE AND WITNESSES.



LOCATION
 (INDICATE CORNER BY "X")

SEAL:



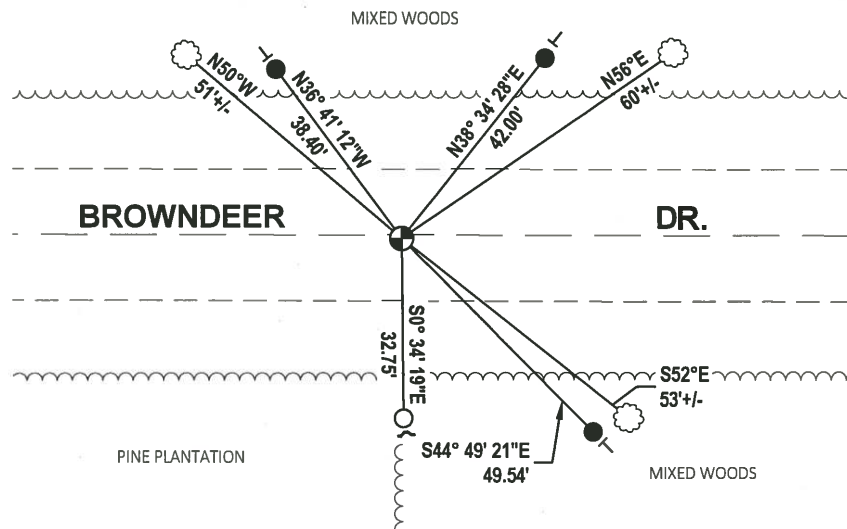
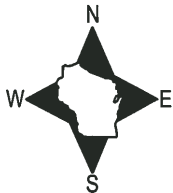
DATA SHOWN HERE ON THIS TIE SHEET IS CORRECT AND COMPLETE TO THE BEST OF MY KNOWLEDGE AND BELIEF.

PROFESSIONAL LAND SURVEYOR

DATE 1/9/2020

- TIE SKETCH

NOTE: THE CORNER LANDS 1± SOUTH OF BROWNDEER DR. CENTERLINE.



- SET 3/4" x 18" IRON REBAR, 1.50#/FT
- FOUND 3/4" IRON ROD
- ⊕ FOUND HARRISON MONUMENT
- ┌ STEEL FENCE POST
- └ VINYL "T" POST
- ☼ WITNESS TREE

Government Land Corner Certificate

Adams County

TYPE OF MONUMENT: Harrison

STATE PLANE COORDINATES: N _____
E _____

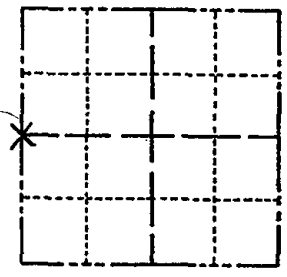
ELEVATION — M.S.L. DATUM: _____

THETA ANGLE: _____

FIELD BOOK: File PAGE _____

DRAWN BY: NJ

CORNER NO. 77
SECTION 27
TOWN 19
RANGE 5



LOCATION
(Indicated by 'X')

BASIS FOR MONUMENT LOCATION

Show info such as: History of corner, with reference to Vol. and pg., dates, surveyor; exact description of monument replaced; if location computed, by taped or EDM traverse; landowner remarks, etc. (Use reverse side if necessary)

Set monument at the intersection of the westline of the SW $\frac{1}{4}$ (from a survey on file in the County Surveyor's office by S. T. Mullen and the centerline of Browndeer Drive. This location best matched possession and original distances within the section. Excavation was not made due to cut in the road.'

Ok 3-21-84 SS

SEAL:



DATA SHOWN HERE ON
CERTIFIED CORRECT:

Gregory P. Rhinehart
Registered Land Surveyor
DATE: Oct. 10, 1979

TIE SKETCH

Show at least four ties, also fence lines, roads, topo, size and type of witness trees and if off road - best way to arrive at corner.

