

27
SECTION

19
TOWN

05
RANGE

ADAMS COUNTY

COUNTY CORNER NO: 98
ROMPORTOL ID: 41905272000

PUBLIC LAND SURVEY MONUMENT RECORD

TYPE OF MONUMENT: HARRISON
ADAMS COUNTY COORDINATES, NAD 83 (2005)

N. 263727.011

E. 514950.381

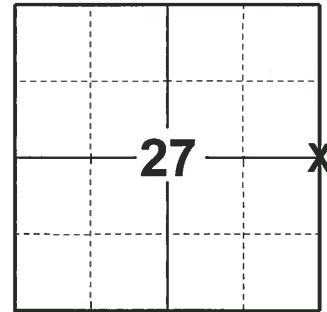
ELEVATION- - - - - DATUM - - - - -

FIELD WORK DATE: 10/29/2019

BASIS FOR MONUMENT LOCATION

1971 - PLS 981 FOUND SPIKE AND SET HARRISON MONUMENT

2019 - PLS 2675 FOUND HARRISON 6"± BELOW THE ROAD SURFACE, 1 TIE AND 2 WITNESSES. THE TIE AND WITNESSES AGREE WITH THE MONUMENT. ACCEPTED THE HARRISON AS THE CORNER LOCATION. SET 3 NEW TIES AND MEASURED TO THE EXISTING TIE AND WITNESSES.



LOCATION
(INDICATE CORNER BY "X")

SEAL:



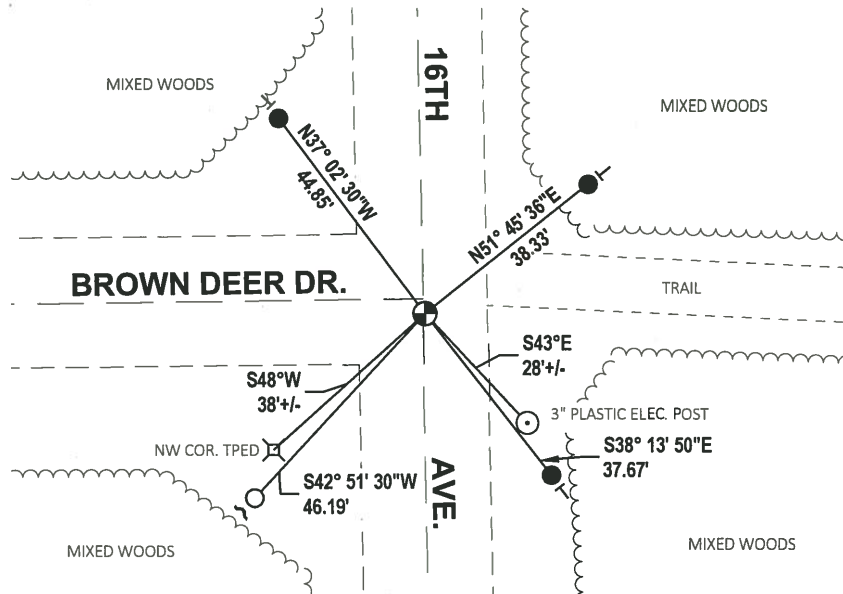
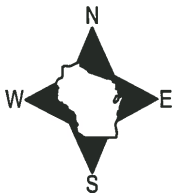
DATA SHOWN HERE ON THIS TIE SHEET IS CORRECT AND COMPLETE TO THE BEST OF MY KNOWLEDGE AND BELIEF.

PROFESSIONAL LAND SURVEYOR

DATE 11/9/2020

- TIE SKETCH

NOTE: THE CORNER FALLS ON THE CENTERLINE OF 16TH AVE. AND 2.7'± SOUTH OF BROWN DEER DR. CENTERLINE.



- SET 3/4" x 18" IRON REBAR, 1.50#/FT
- FOUND 3/4" IRON ROD
- ⊙ FOUND HARRISON MONUMENT
- ~ STEEL FENCE POST
- VINYL "T" POST

ADAMS COUNTY

Survey Monument Record

TYPE OF MONUMENT: 30" HARRISON

STATE PLANE COORDINATES: N _____
E _____

ELEVATION — M.S.L. DATUM: _____

THETA ANGLE: _____

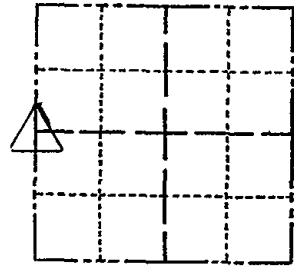
FIELD BOOK: 104 PAGE 105

CORNER NO. 76

SECTION 26

TOWN 19

RANGE 5



LOCATION
(Indicated by 'X')

SEAL:

BASIS FOR MONUMENT LOCATION

(Use reverse side if necessary)

Show info such as: History of corner, with reference to Vol. and pg, dates, surveyor; exact description of monument replaced; if location computed, by taped or EDM traverse; landowner remarks, etc.

Found spike and set monument

November 26, 1971

Sam T. Millen R.L.S. S-981

Cor OK 11-30-78 RN-DA

See the reverse side for the updated map 3-21-84

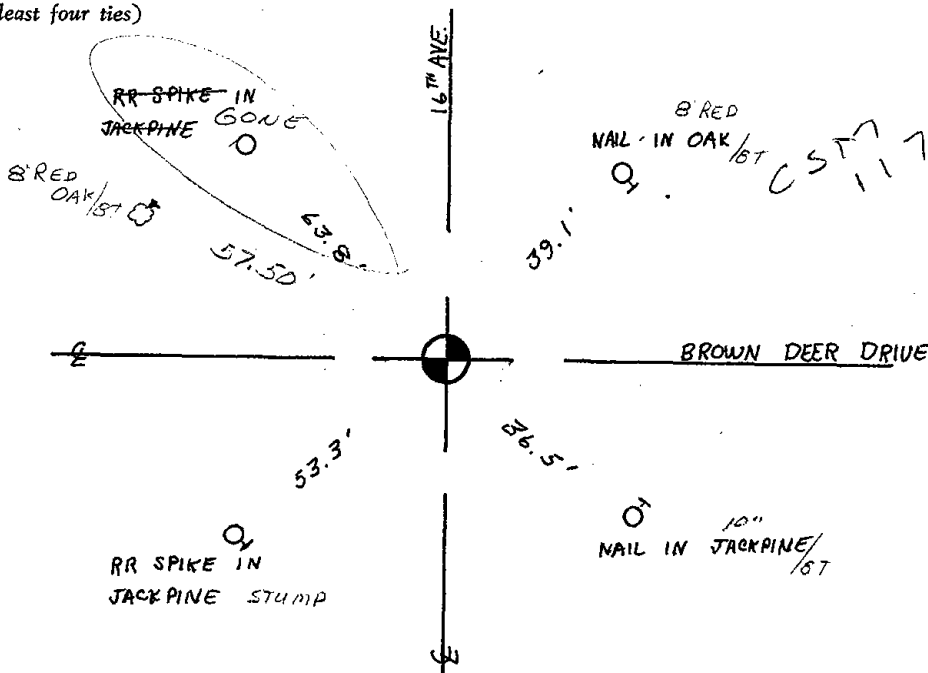
CERTIFIED CORRECT:

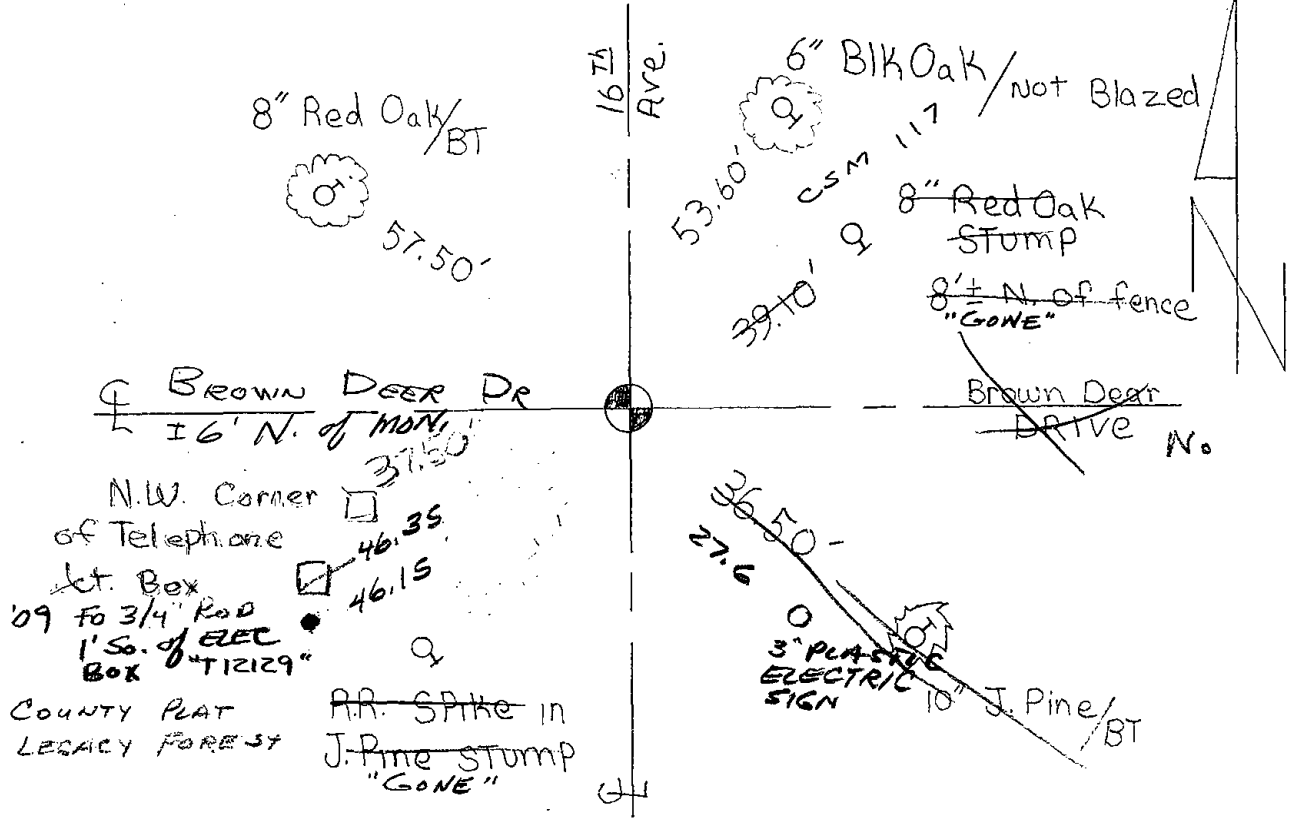
Registered Land Surveyor

DATE: _____

TIE SKETCH

(Show at least four ties)





2 new 3-21-84 SS

- OK 3-23-98 SS
- OK 2-14-94 CR-14
- OK 2-10-98 - JG
- OK 1-25-99 - JG
- OK 1-02-03 - JG

4-6-09
 ADD 6" JACK PINE - NAIL So. SIDE
 IN 70° E 65.45'
 6" JACK PINE - NAIL W. SIDE
 IN 30° E 47.1'