

PUBLIC LAND SURVEY MONUMENT RECORD

TYPE OF MONUMENT: HARRISON
 ADAMS COUNTY COORDINATES, NAD 83 (2005)

N. 263728.924

E. 520267.080

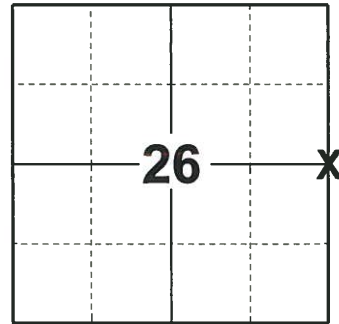
ELEVATION- - - - DATUM - - - -

FIELD WORK DATE: 10/28/2019

BASIS FOR MONUMENT LOCATION

1971 - PLS 981 FOUND NAIL, BOLT, AND STONE, SET 11" HARRISON MONUMENT ON TOP OF STONE.

2019 - PLS 2675 FOUND A PK NAIL IN THE ROAD SURFACE, 3 TIES AND 1 PROPERTY IRON. REMOVED THE PK NAIL AND FOUND A HARRISON MONUMENT 6" BELOW. THE MONUMENT AGREES WITH THE EXISTING TIES. ACCEPTED THE HARRISON MONUMENT AS THE CORNER LOCATION. SET 2 NEW TIES AND MEASURED TO THE TIES AND PROPERTY IRON.



LOCATION
 (INDICATE CORNER BY "X")

SEAL:



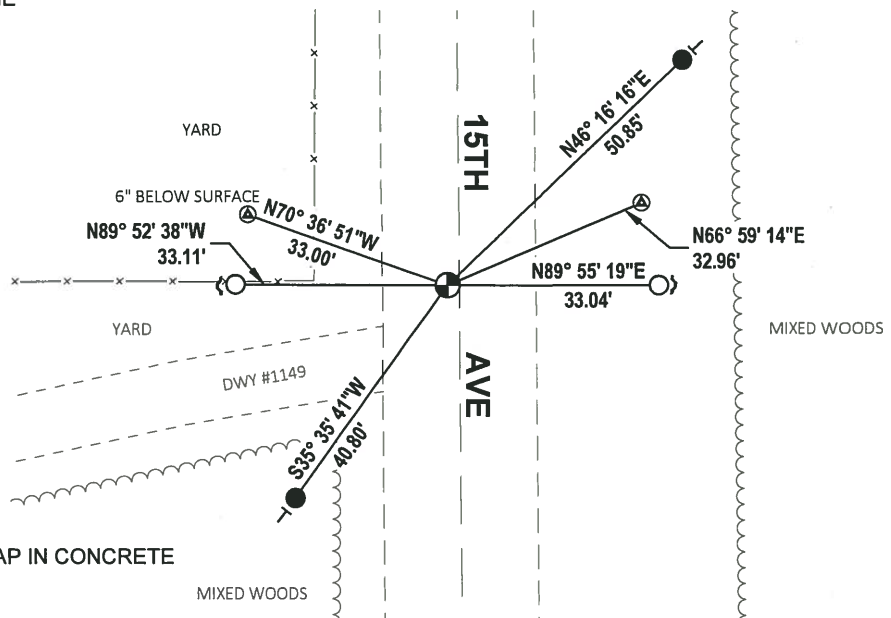
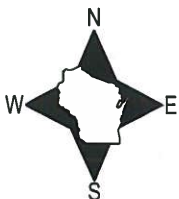
DATA SHOWN HERE ON THIS TIE SHEET IS CORRECT AND COMPLETE TO THE BEST OF MY KNOWLEDGE AND BELIEF.

PROFESSIONAL LAND SURVEYOR

DATE 11/25/19

TIE SKETCH

NOTE: THE CORNER FALLS 2' WEST OF THE CENTERLINE OF 15TH AVE.



- SET 3/4" x 18" IRON REBAR, 1.50#/FT
- FOUND 3/4" IRON ROD
- ⊗ FOUND ADAMS COUNTY ALUMINUM CAP IN CONCRETE
- ⊕ FOUND HARRISON MONUMENT
- ↘ STEEL FENCE POST
- ┆ VINYL "T" POST

ADAMS COUNTY

Survey Monument Record

CORNER NO. 3
SECTION 26
TOWN 19
RANGE 5

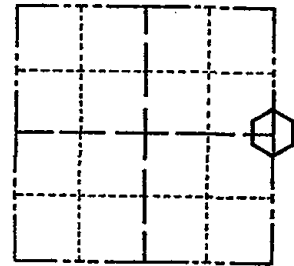
TYPE OF MONUMENT: 11" HARRISON

STATE PLANE COORDINATES: N _____
E _____

ELEVATION -- M.S.L. DATUM: _____

THETA ANGLE: _____

FIELD BOOK: 104 PAGE 35



LOCATION
(Indicated by 'X')

SEAL:

BASIS FOR MONUMENT LOCATION

(Use reverse side if necessary)

Show info such as: History of corner, with reference to Vol. and pg, dates, surveyor; exact description of monument replaced; if location computed, by taped or EDM traverse; landowner remarks, etc.

Found nail and bolt and stone, set 11" monument on top of stone

July 2, 1971.

Sam T. Mullen R.L.S. S-981

Cor OK 11-30-78 RN-DA

OK 4-17-84 SS-DK

CERTIFIED CORRECT:

(IN NEW TIE) OK 2-14-94 CR-JG
OK, 2-10-98-JG

Registered Land Surveyor

DATE: _____

TIE SKETCH 2-NEW, 1-02-03, - JG
1-14-09 55

(Show at least four ties)

