

29
SECTION

19
TOWN

05
RANGE

ADAMS COUNTY

COUNTY CORNER NO: 105

ROMPORTOL ID: 41905290000

PUBLIC LAND SURVEY MONUMENT RECORD

TYPE OF MONUMENT: HARRISON (BROKEN-TOP)
ADAMS COUNTY COORDINATES, NAD 83 (2005)

N. 261080.123

E. 504344.382

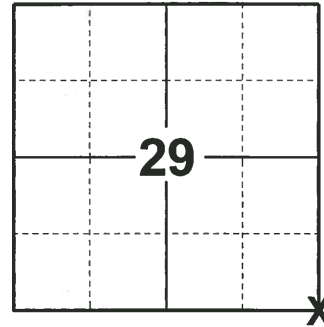
ELEVATION- - - - - DATUM - - - - -

FIELD WORK DATE: 11/20/2019

BASIS FOR MONUMENT LOCATION

1971 - PLS 981 FOUND R.R. SPIKE AND SET HARRISON MONUMENT.

2019 - PLS 2675 FOUND HARRISON (BROKEN-TOP) MONUMENT 8'± BELOW THE ROAD SURFACE AND 1 WITNESS. THE MONUMENT AGREES WITH THE WITNESS. ACCEPTED THE HARRISON (BROKEN-TOP) MONUMENT AS THE CORNER LOCATION. SET 4 NEW TIES AND MEASURED TO THE EXISTING WITNESS.



LOCATION
(INDICATE CORNER BY "X")

SEAL:



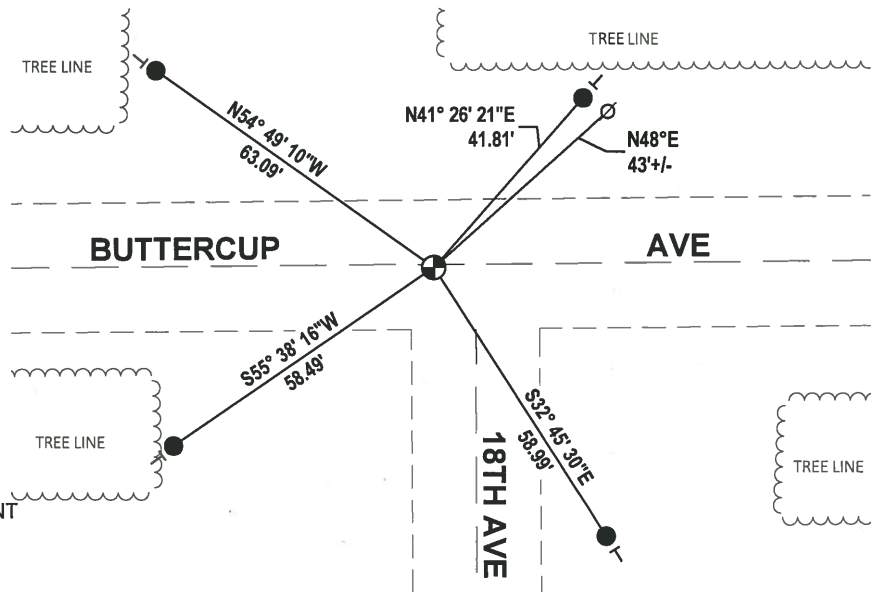
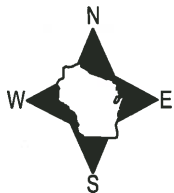
DATA SHOWN HERE ON THIS TIE SHEET IS CORRECT AND COMPLETE TO THE BEST OF MY KNOWLEDGE AND BELIEF.

PROFESSIONAL LAND SURVEYOR

DATE 1/9/2020

- TIE SKETCH

NOTE: THE CORNER LANDS 1'± SOUTH OF BUTTERCUP AVE CENTERLINE AND 6'± WEST OF 18TH AVE CENTERLINE.



- SET 3/4" x 18" IRON REBAR, 1.50#/FT
- ⊕ FOUND HARRISON (BROKEN-TOP) MONUMENT
- ∅ WITNESS POWER POLE
- VINYL "T" POST

ADAMS COUNTY

CORNER NO. 81

Survey Monument Record

SECTION 28

TYPE OF MONUMENT: 30" HARRISON

TOWN 19

STATE PLANE COORDINATES: N _____

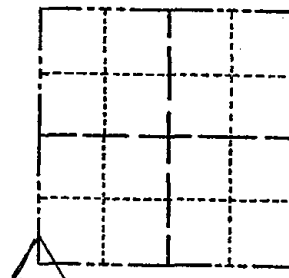
RANGE 5

E _____

ELEVATION — M.S.L. DATUM: _____

THETA ANGLE: _____

FIELD BOOK: 104 PAGE 110



LOCATION
(Indicated by 'X')

SEAL:

BASIS FOR MONUMENT LOCATION

(Use reverse side if necessary)

Show info such as: History of corner, with reference to Vol. and pg, dates, surveyor; exact description of monument replaced; if location computed, by taped or EDM traverse; landowner remarks, etc.

Found RR spike and set monument

November 26, 1971

Sam T. Mullen R.L.S. S-981

Ok 3-21-84 SS
OK 11-22-88 G.R. - J.R.

OK 3-20-79 RR SS
SEE CARLSON 5/14/90 NEXT PAGE
OK 2-14-94 CR-54
OK 1-18-99 - JG
1-GONE, 1-NEW, 12-22-03-JG
1-14-09 OK SS

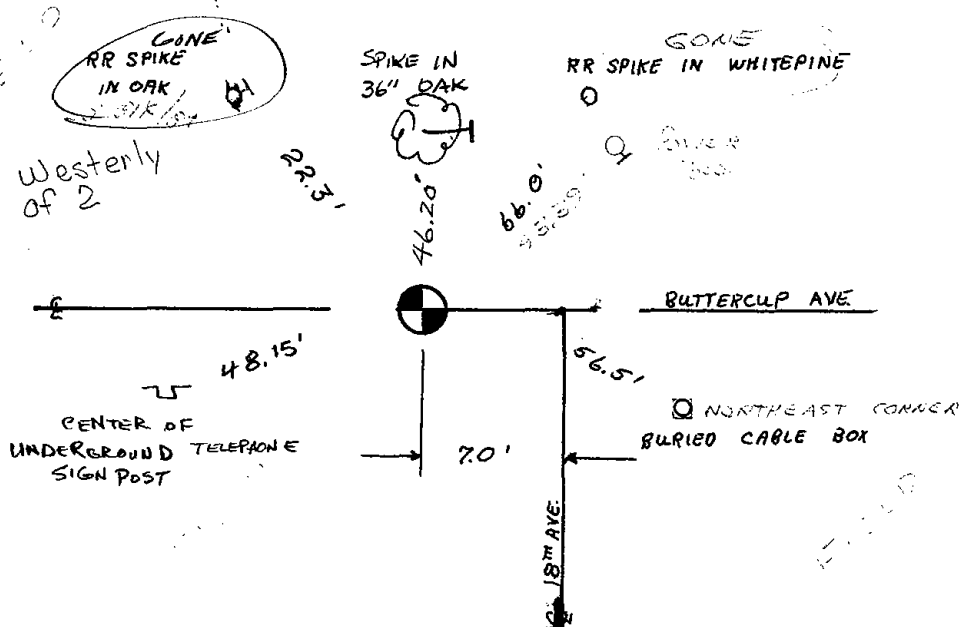
CERTIFIED CORRECT:

Registered Land Surveyor

DATE: _____

TIE SKETCH

(Show at least four ties)



ADAMS COUNTY

Survey Monument Record

TYPE OF MONUMENT: 30" HARRISON

STATE PLANE COORDINATES: N _____

E _____

ELEVATION — M.S.L. DATUM: _____

THETA ANGLE: _____

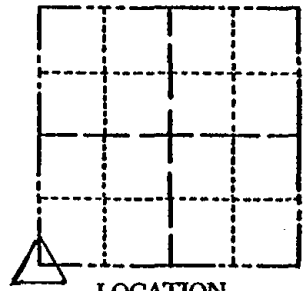
FIELD BOOK: 104 PAGE 110

CORNER NO. 81

SECTION 28

TOWN 19

RANGE 5



LOCATION
(Indicated by 'X')

SEAL:

BASIS FOR MONUMENT LOCATION

(Use reverse side if necessary)

Show info such as: History of corner, with reference to Vol. and pg, dates, surveyor; exact description of monument replaced; if location computed, by taped or EDM traverse; landowner remarks, etc.

Found RR spike and set monument

November 26, 1971

Sam T. Mullen R.L.S. S-981

Ok 3-21-84 SS
OK 11-22-88 G.P.-J.R.
OK 2-14-94 CR-JG

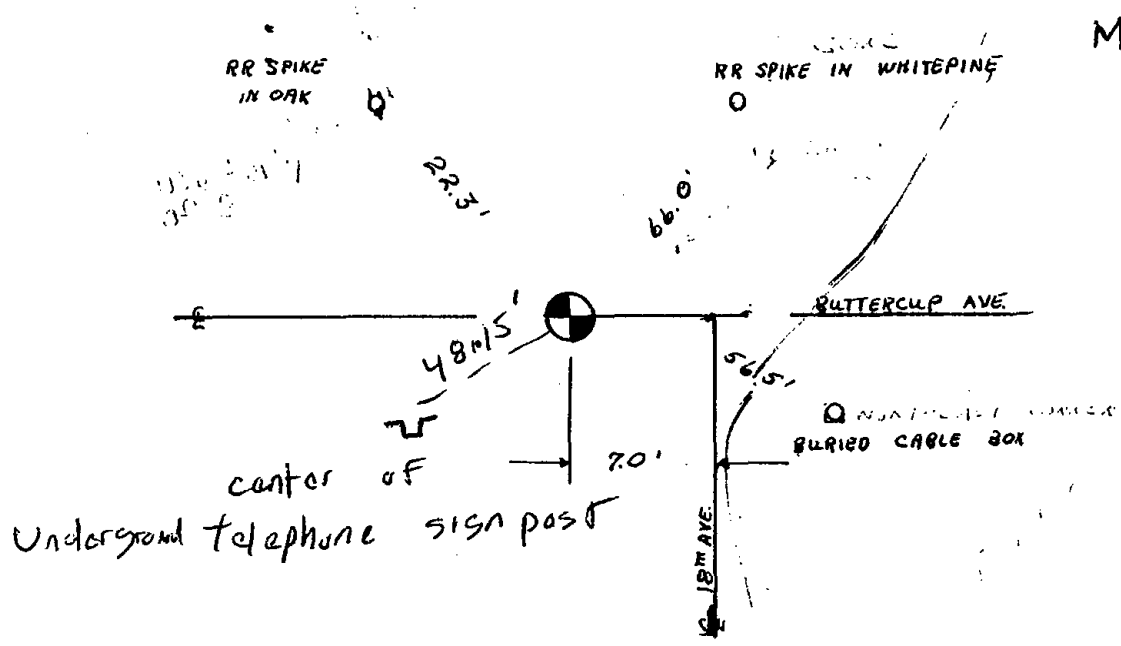
CERTIFIED CORRECT:

Registered Land Surveyor

DATE: _____

TIE SKETCH

(Show at least four ties)



CKD TIES
Mg 14'90
Mark Carlson