

PUBLIC LAND SURVEY MONUMENT RECORD

TYPE OF MONUMENT: HARRISON
 ADAMS COUNTY COORDINATES, NAD 83 (2005)

N. 261076.126

E. 509657.678

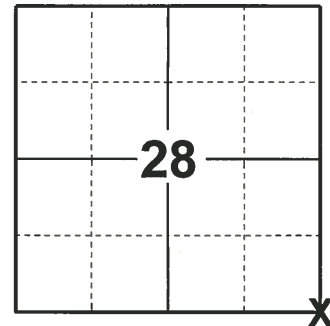
ELEVATION- - - - - DATUM - - - - -

FIELD WORK DATE: 10/30/2019

BASIS FOR MONUMENT LOCATION

1971 - PLS 981 FOUND R.R. SPIKE AND SET HARRISON MONUMENT.

2019 - PLS 2675 FOUND HARRISON MONUMENT 2"± BELOW THE ROAD SURFACE, 2 TIES, AND 3 WITNESSES. THE MONUMENT AGREES WITH ALL THE TIES AND WITNESSES. ACCEPTED THE HARRISON MONUMENT AS THE CORNER LOCATION. SET 2 NEW TIES AND MEASURED TO THE EXISTING TIES AND WITNESSES.



LOCATION

(INDICATE CORNER BY "X")

SEAL:



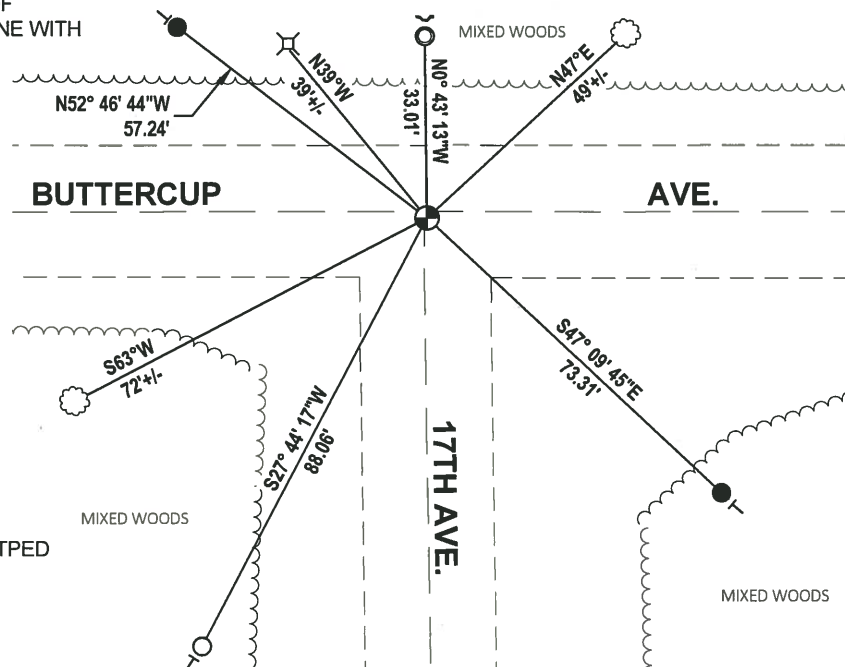
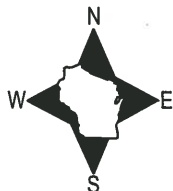
DATA SHOWN HERE ON THIS TIE SHEET IS CORRECT AND COMPLETE TO THE BEST OF MY KNOWLEDGE AND BELIEF.

PROFESSIONAL LAND SURVEYOR

DATE 1/9/2020

- TIE SKETCH

NOTE: THE CORNER LANDS 1.3"± SOUTH OF BUTTERCUP AVE. CENTERLINE AND ON LINE WITH 17TH AVE. CENTERLINE.



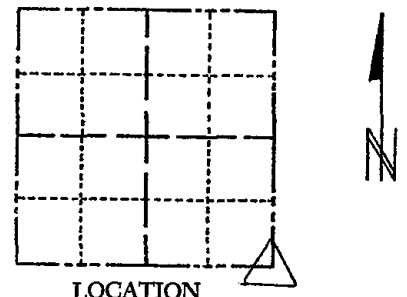
- SET 3/4" x 18" IRON REBAR, 1.50#/FT
- FOUND 3/4" IRON ROD
- FOUND 1-1/4" O.D. IRON PIPE
- ⊕ FOUND HARRISON MONUMENT
- ⌵ NE COR. AT GROUND OF 6"X6" WOOD POST/TPED
- ~ STEEL FENCE POST
- VINYL "T" POST
- ⊗ WITNESS TREE

ADAMS COUNTY

Survey Monument Record

TYPE OF MONUMENT: 30" HARRISON
 STATE PLANE COORDINATES: N _____
 E _____
 ELEVATION — M.S.L. DATUM: _____
 THETA ANGLE: _____
 FIELD BOOK: 104 PAGE 108

CORNER NO. 79
 SECTION 28
 TOWN 19
 RANGE 5



LOCATION
(Indicated by 'X')

SEAL:

BASIS FOR MONUMENT LOCATION

(Use reverse side if necessary)

Show info such as: History of corner, with reference to Vol. and pg, dates, surveyor; exact description of monument replaced; if location computed, by taped or EDM traverse; landowner remarks, etc.

Found RR spike and set monument
 November 26, 1971
 Sam T. Millen R.L.S. S-981

- OK 3-20-79 RN-55
- OK 3-21-84 SS
- OK 11-22-88 G.R.-J.R. (ONE NEWTIE AS SHOWN)
- OK 2-14-94 CR-54
- OK 1-18-99 - JG
- 1 GONE, 4 LEFT, 12-23-03-JG

CERTIFIED CORRECT:

 Registered Land Surveyor
 DATE: _____

TIE SKETCH

3 NEW TIES 4-6-09 SS

(Show at least four ties)

