

## PUBLIC LAND SURVEY MONUMENT RECORD

TYPE OF MONUMENT: HARRISON  
 ADAMS COUNTY COORDINATES, NAD 83 (2005)

N. 261080.358

E. 517639.068

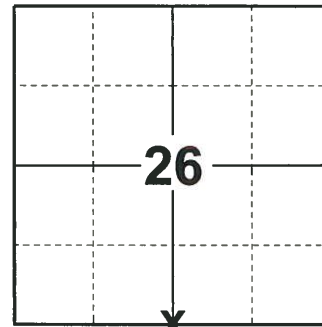
ELEVATION- \_\_\_\_\_ DATUM \_\_\_\_\_

FIELD WORK DATE: 10/29/2019

### BASIS FOR MONUMENT LOCATION

1971 - PLS 981 FOUND "PK" NAIL AND SET HARRISON MONUMENT.

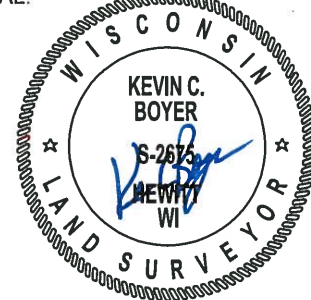
2019 - PLS 2675 FOUND A HARRISON MONUMENT 6" BELOW THE ROAD SURFACE, 1 TIE AND 1 WITNESS TREE. THE MONUMENT AGREES WITH THE EXISTING TIE AND WITNESS. ACCEPTED THE HARRISON MONUMENT AS THE CORNER LOCATION, SET 3 NEW TIES AND MEASURED TO THE TIES AND WITNESS TREE.



**LOCATION**

(INDICATE CORNER BY "X")

SEAL:



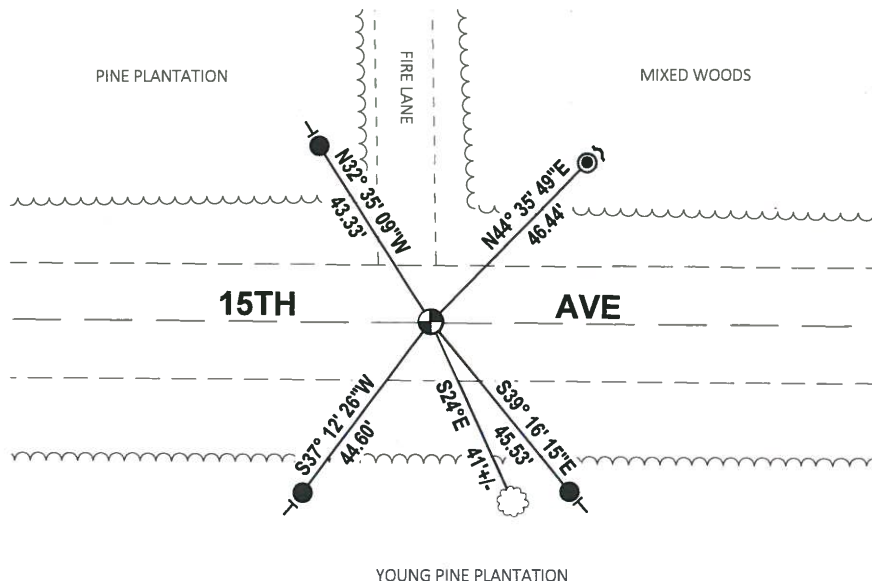
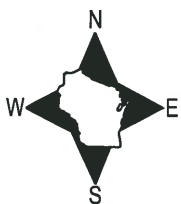
DATA SHOWN HERE ON THIS TIE SHEET IS CORRECT AND COMPLETE TO THE BEST OF MY KNOWLEDGE AND BELIEF.

PROFESSIONAL LAND SURVEYOR

DATE 11/25/19

### TIE SKETCH

NOTE: THE CORNER FALLS 0.5' ± NORTH OF THE CENTERLINE OF 15TH AVE.



- SET 3/4" x 18" IRON REBAR, 1.50#/FT
- FOUND 1-1/4" IRON ROD
- ⊕ FOUND HARRISON MONUMENT
- ~ STEEL FENCE POST
- ⊥ VINYL "T" POST
- ☉ WITNESS TREE

# ADAMS COUNTY

## Survey Monument Record

TYPE OF MONUMENT: 30" HARRISON

STATE PLANE COORDINATES: N \_\_\_\_\_

E \_\_\_\_\_

ELEVATION -- M.S.L. DATUM: \_\_\_\_\_

THETA ANGLE: \_\_\_\_\_

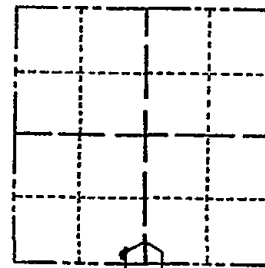
FIELD BOOK: 104 PAGE 53

CORNER NO. 21

SECTION 26

TOWN 19

RANGE 5



LOCATION  
(Indicated by 'X')

SEAL:

### BASIS FOR MONUMENT LOCATION

(Use reverse side if necessary)

Show info such as: History of corner, with reference to Vol. and pg, dates, surveyor; exact description of monument replaced; if location computed, by taped or EDM traverse; landowner remarks, etc.

Found "PK" nail and set monument

July 14, 1971

Sam T. Mullen R.L.S. S-981

*CHK OK 11-30-79 RN-DA*

OK 3-21-84 SS

See the reverse side for the revised map

OK 11-22-88 G.R. - J.R.

CERTIFIED CORRECT:

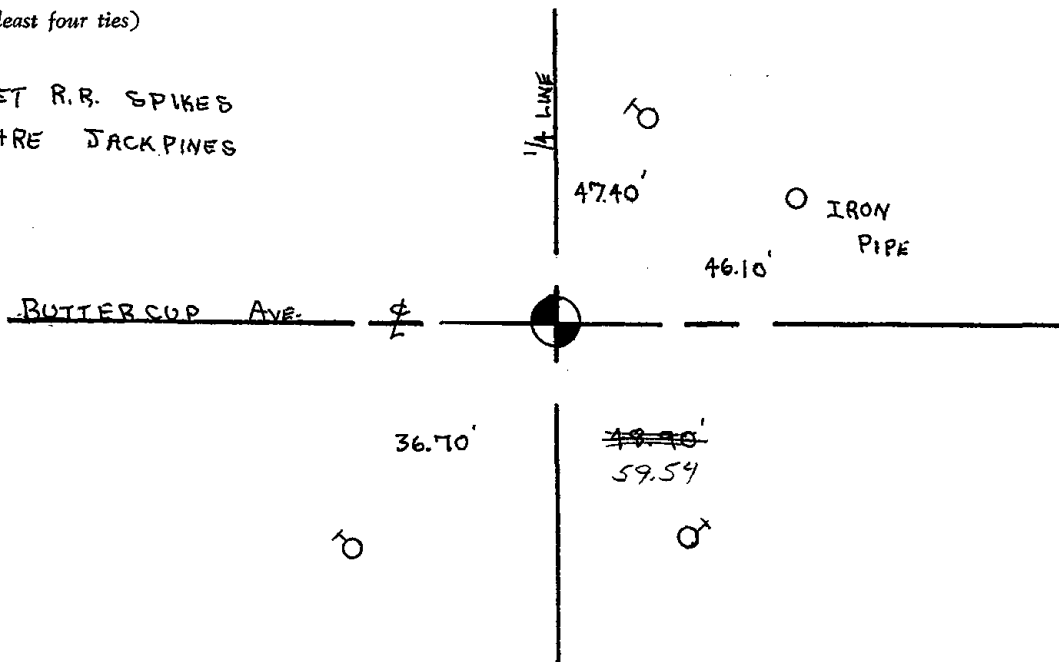
Registered Land Surveyor

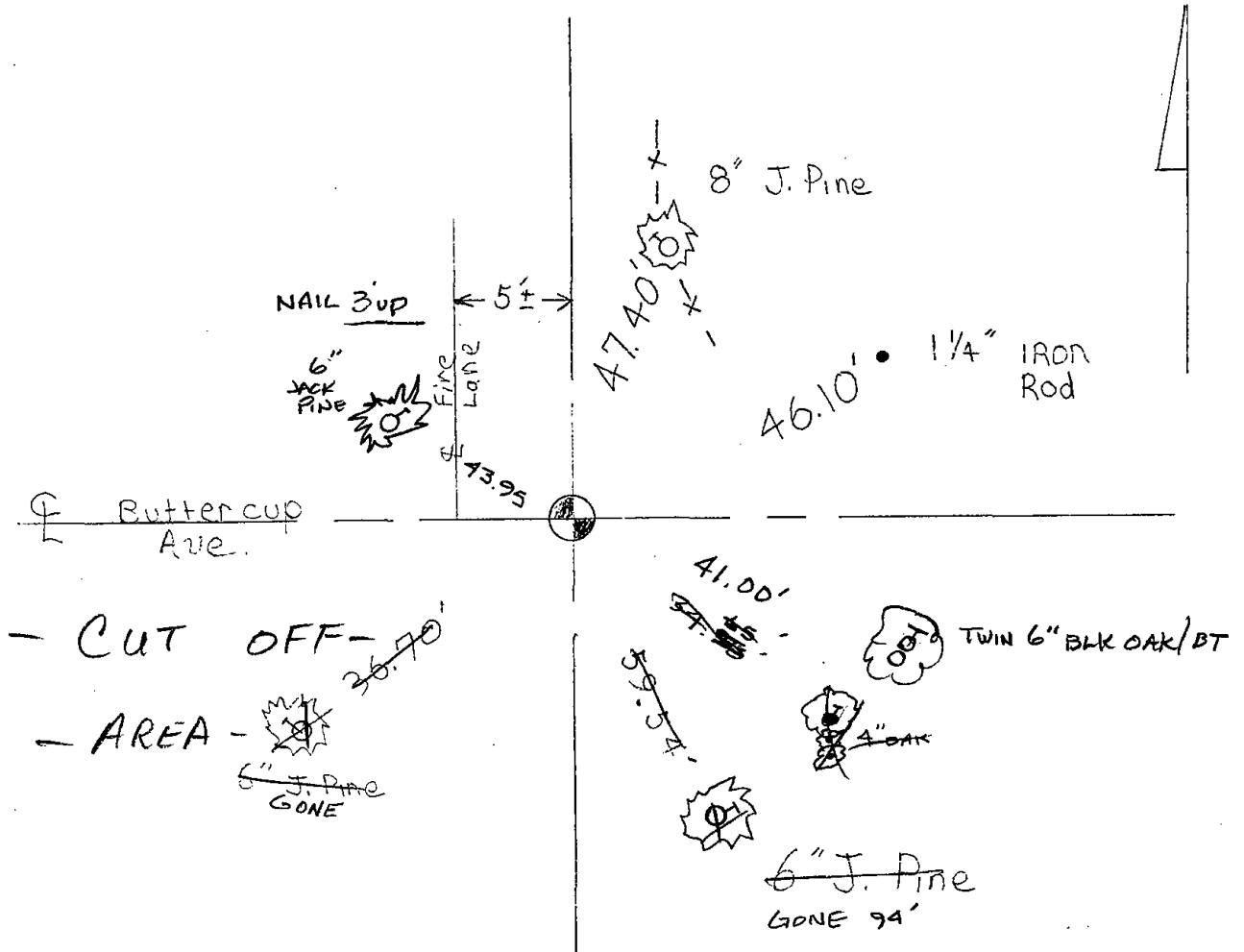
DATE: \_\_\_\_\_

### TIE SKETCH

(Show at least four ties)

SET R.B. SPIKES  
THRE JACK PINES





Map was updated on 3-21-84 SS  
 2 NEW TIES 2-14-94 CR-JG  
 OK, 2-10-98-JG  
 2-GONE, 2-NEW, MON. OK, 1-02-03-JG  
 1-14-09 SS OK