

PUBLIC LAND SURVEY MONUMENT RECORD

TYPE OF MONUMENT: HARRISON
 ADAMS COUNTY COORDINATES, NAD 83 (2005)

N. 261044.647

E. 522907.178

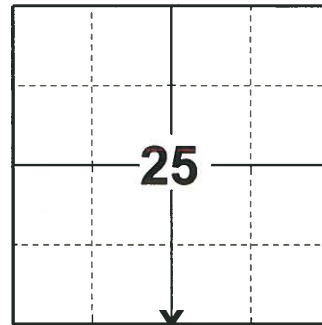
ELEVATION- _____ DATUM _____

FIELD WORK DATE: 10/28/2019

BASIS FOR MONUMENT LOCATION

1971 - PLS FOUND R.R. SPIKE AND SET HARRISON MONUMENT.

2019 - PLS 2675 FOUND A HARRISON MONUMENT 6" BELOW THE ROAD SURFACE, 1 PROPERTY IRON AND 2 WITNESSES. THE MONUMENT AGREES WITH THE EXISTING WITNESSES. ACCEPTED THE HARRISON MONUMENT AS THE CORNER LOCATION. SET 3 NEW TIES AND MEASURED TO THE TIES, PROPERTY IRON AND WITNESSES.



LOCATION

(INDICATE CORNER BY "X")

SEAL:



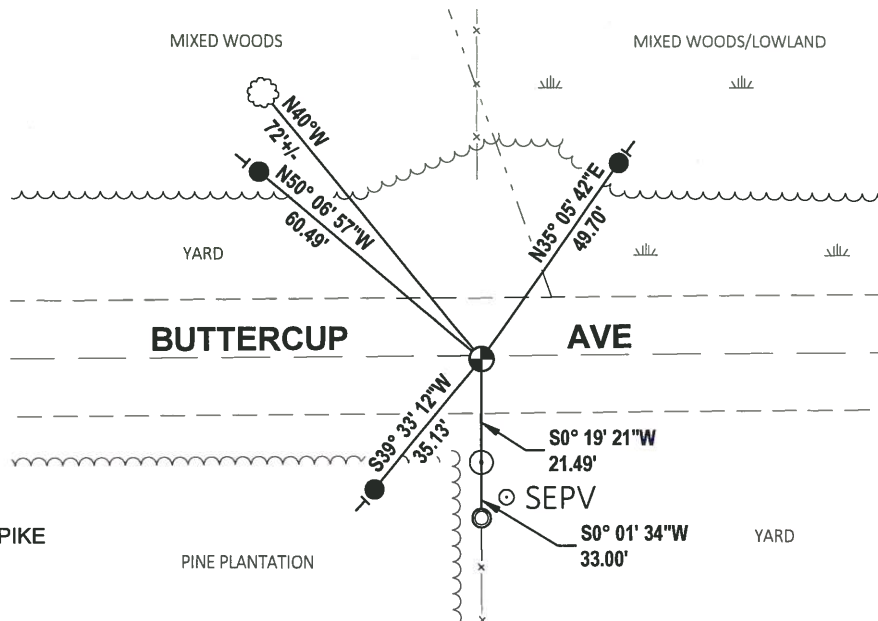
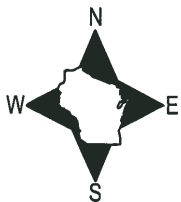
DATA SHOWN HERE ON THIS TIE SHEET IS CORRECT AND COMPLETE TO THE BEST OF MY KNOWLEDGE AND BELIEF.

PROFESSIONAL LAND SURVEYOR

DATE 11/25/19

- TIE SKETCH -

NOTE: THE CORNER FALLS 1' ± SOUTH OF THE CENTERLINE OF BUTTERCUP AVE.



- SET 3/4" x 18" IRON REBAR, 1.50#/FT
- FOUND 1-1/4" O.D. IRON PIPE
- ⊕ FOUND HARRISON MONUMENT
- ⊙ WITNESS CORNER POST WITH R.R. SPIKE
- └ VINYL "T" POST
- ☼ WITNESS TREE

ADAMS COUNTY

Survey Monument Record

TYPE OF MONUMENT: 30" HARRISON

STATE PLANE COORDINATES: N _____

E _____

ELEVATION — M.S.L. DATUM: _____

THETA ANGLE: _____

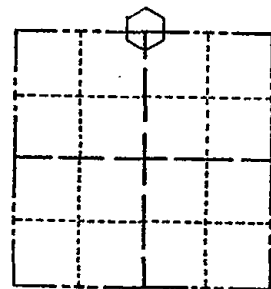
FIELD BOOK: 104 PAGE 52

CORNER NO. 20

SECTION 36

TOWN 19

RANGE 5



LOCATION
(Indicated by 'X')

SEAL:

BASIS FOR MONUMENT LOCATION

(Use reverse side if necessary)

Show info such as: History of corner, with reference to Vol. and pg. dates, surveyor; exact description of monument replaced; if location computed, by taped or EDM traverse; landowner remarks, etc.

Found R.R. spike and set monument

July 14, 1971

Sam T. Mullen R.L.S. S-981

OK 1-14-09 SS
Cor OK 11-30-78 RW DA

OK 4-24-84 SS-DK

OK 11-22-88 G.R.-J.R.

OK - 2-14-99 CR-JG

OK, 2-10-98-JG

CERTIFIED CORRECT:

Registered Land Surveyor

DATE: _____

TIE SKETCH OK, 12-31-02 - JG

(Show at least four ties)

