

25
SECTION

19
TOWN

05
RANGE

ADAMS COUNTY

COUNTY CORNER NO: 113

ROMPORTOL ID: 41905250000

PUBLIC LAND SURVEY MONUMENT RECORD

TYPE OF MONUMENT: HARRISON (BROKEN-TOP)
ADAMS COUNTY COORDINATES, NAD 83 (2007)

N. 261101.069

E. 525536.225

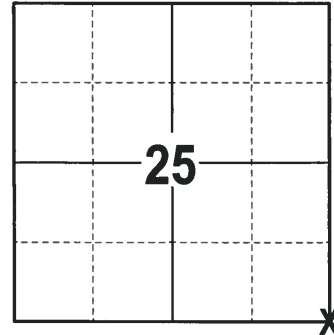
ELEVATION- _____ DATUM _____

FIELD WORK DATE: 01/16/2018

BASIS FOR MONUMENT LOCATION

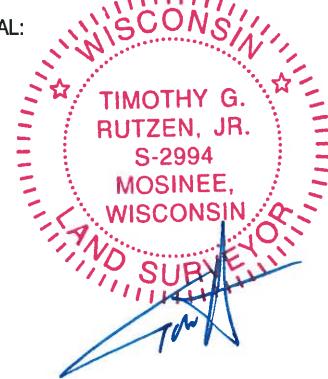
1973 - PLS 878 EXCAVATED THE AREA WITH A BACKHOE AND FOUND A 2"X4"X8" STONE WITH A SLEIGH SHOE ALONGSIDE. LOWERED THE STONE AND SHOE AND PLACED A HARRISON MONUMENT ON TOP AND TIED OUT.

2018 - PLS 2994 FOUND A HARRISON MONUMENT WITH A BROKEN-TOP 12" BELOW THE ROAD SURFACE. FOUND NO EVIDENCE OF ANY OF THE WITNESSES. ACCEPTED THE HARRISON MONUMENT WITH A BROKEN-TOP AS THE BEST EVIDENCE OF THE CORNER LOCATION. SET 4 NEW TIES AND MEASURED TO THE TIES.



LOCATION
(INDICATE CORNER BY "X")

SEAL:



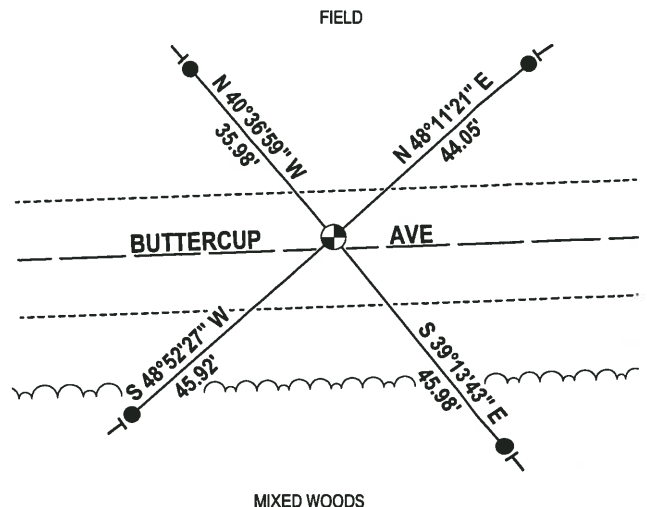
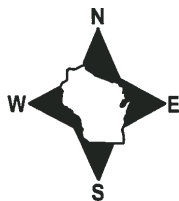
DATA SHOWN HERE ON THIS TIE SHEET IS CORRECT AND COMPLETE TO THE BEST OF MY KNOWLEDGE AND BELIEF.

PROFESSIONAL LAND SURVEYOR

DATE 3-1-18

- TIE SKETCH

NOTE: THE CORNER FALLS 2± NORTH OF THE CENTERLINE OF BUTTERCUP AVE.



- 3/4" x 18" IRON REBAR SET, 1.50#/FT
- ⊕ HARRISON (BROKEN-TOP) FOUND
- VINYL "T" POST

ADAMS COUNTY

Survey Monument Record

TYPE OF MONUMENT: 30" HARRISON

STATE PLANE COORDINATES: N _____

E _____

ELEVATION — M.S.L. DATUM: _____

THETA ANGLE: _____

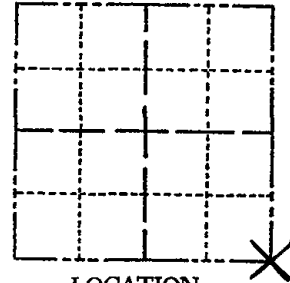
FIELD BOOK: 108 PAGE 103

CORNER NO. 318

SECTION 25

TOWN 19

RANGE 5



LOCATION
(Indicated by 'X')

SEAL:

BASIS FOR MONUMENT LOCATION

(Use reverse side if necessary)

Show info such as: History of corner, with reference to Vol. and pg, dates, surveyor; exact description of monument replaced; if location computed, by taped or EDM traverse; landowner remarks, etc.

Excavated area with backhoe and found a 2"x4"x8" stone with a sleigh shoe alongside. Lowered stone and shoe and put Harrison monument on top. Witnessed by R. Wennerstrom.

Stone set by G.W. Severns Oct. 2, 1935 per notes found in Wood county records. (Severns was Wood Co. Surveyor)



1-14-09 SS
COK OK 11-30-78 RN-DA

Ok 4-24-84 SS-DK
OK 11-22-88 GR-JR.
OK 2-14-94 CR-JG
OK, 2-11-98 - JG
1-GONE, 2-NEW, mon OK, 12-31-02 - JG

CERTIFIED CORRECT:

Anthony B. Kiedrowski
Registered Land Surveyor

DATE: 12-19-73

TIE SKETCH

(Show at least four ties)

