

## PUBLIC LAND SURVEY MONUMENT RECORD

TYPE OF MONUMENT: HARRISON (BROKEN-TOP)  
 ADAMS COUNTY COORDINATES, NAD 83 (2005)

N. 258437.703

E. 504367.412

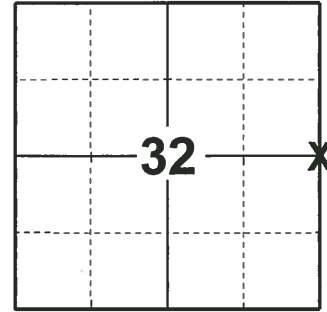
ELEVATION- - - - - DATUM - - - - -

FIELD WORK DATE: 11/20/2019

### BASIS FOR MONUMENT LOCATION

1974 - PLS 1103 EXCAVATED WITH BACKHOE, BUT FOUND NO EVIDENCE AS TO THE LOCATION OF THE CORNER OR ANY OF ITS ACCESSORIES. TRAVERSE, AND SET QUARTER CORNER EQUIDISTANT AND ON LINE BETWEEN NORTHEAST AND SOUTHEAST SECTION CORNERS.

2019 - PLS 2675 FOUND HARRISON (BROKEN-TOP) MONUMENT 8"± BELOW THE ROAD SURFACE AND 1 WITNESS. THE MONUMENT AGREES WITH THE WITNESS. ACCEPTED THE HARRISON (BROKEN-TOP) MONUMENT AS THE CORNER LOCATION. SET 4 NEW TIES AND MEASURED TO THE EXISTING WITNESSES.



**LOCATION**  
(INDICATE CORNER BY "X")

SEAL:



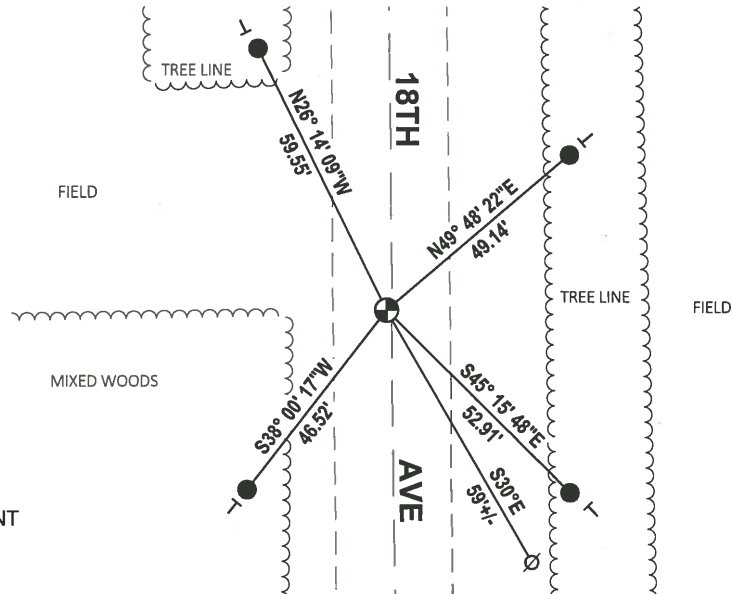
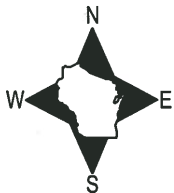
DATA SHOWN HERE ON THIS TIE SHEET IS CORRECT AND COMPLETE TO THE BEST OF MY KNOWLEDGE AND BELIEF.

PROFESSIONAL LAND SURVEYOR

DATE 11/9/2020

### - TIE SKETCH

NOTE: THE CORNER FALLS 1'± WEST OF 18TH AVE CENTERLINE.



- SET 3/4" x 18" IRON REBAR, 1.50#/FT
- ⊕ FOUND HARRISON (BROKEN-TOP) MONUMENT
- ⊘ WITNESS POWER POLE
- VINYL "T" POST

# ADAMS COUNTY

## Survey Monument Record

TYPE OF MONUMENT: HARRISON MONUMENT

STATE PLANE COORDINATES: N \_\_\_\_\_

E \_\_\_\_\_

ELEVATION — M.S.L. DATUM: \_\_\_\_\_

THETA ANGLE: \_\_\_\_\_

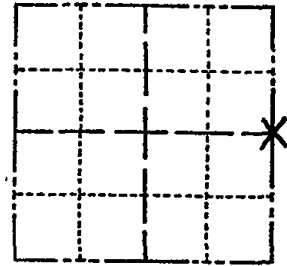
FIELD BOOK: \_\_\_\_\_ PAGE \_\_\_\_\_

CORNER NO. 488

SECTION 32

TOWN 19

RANGE 5



LOCATION  
(Indicated by 'X')

SEAL:

### BASIS FOR MONUMENT LOCATION

(Use reverse side if necessary)

Show info such as: History of corner, with reference to Vol. and pg, dates, surveyor; exact description of monument replaced; if location computed, by taped or EDM traverse; landowner remarks, etc.

Excavated with backhoe, but found no evidence as to the location of the corner or any of its accessories.

Traversed around Section 32 with EDM/transit traverse, and set Quarter corner equidistant and on line between Northeast and Southeast Section corners.

- 1 NEW TIE 4-6-09 SS
- OK 1-18-99-JG
- OK 2-14-94 CR-JG
- OK 3-20-79 RN-SS

- OK 3-21-84 SS
- 2 NEW TIES 7-7-89 MK-SS
- OK 4-14-90 MARK CARLSON



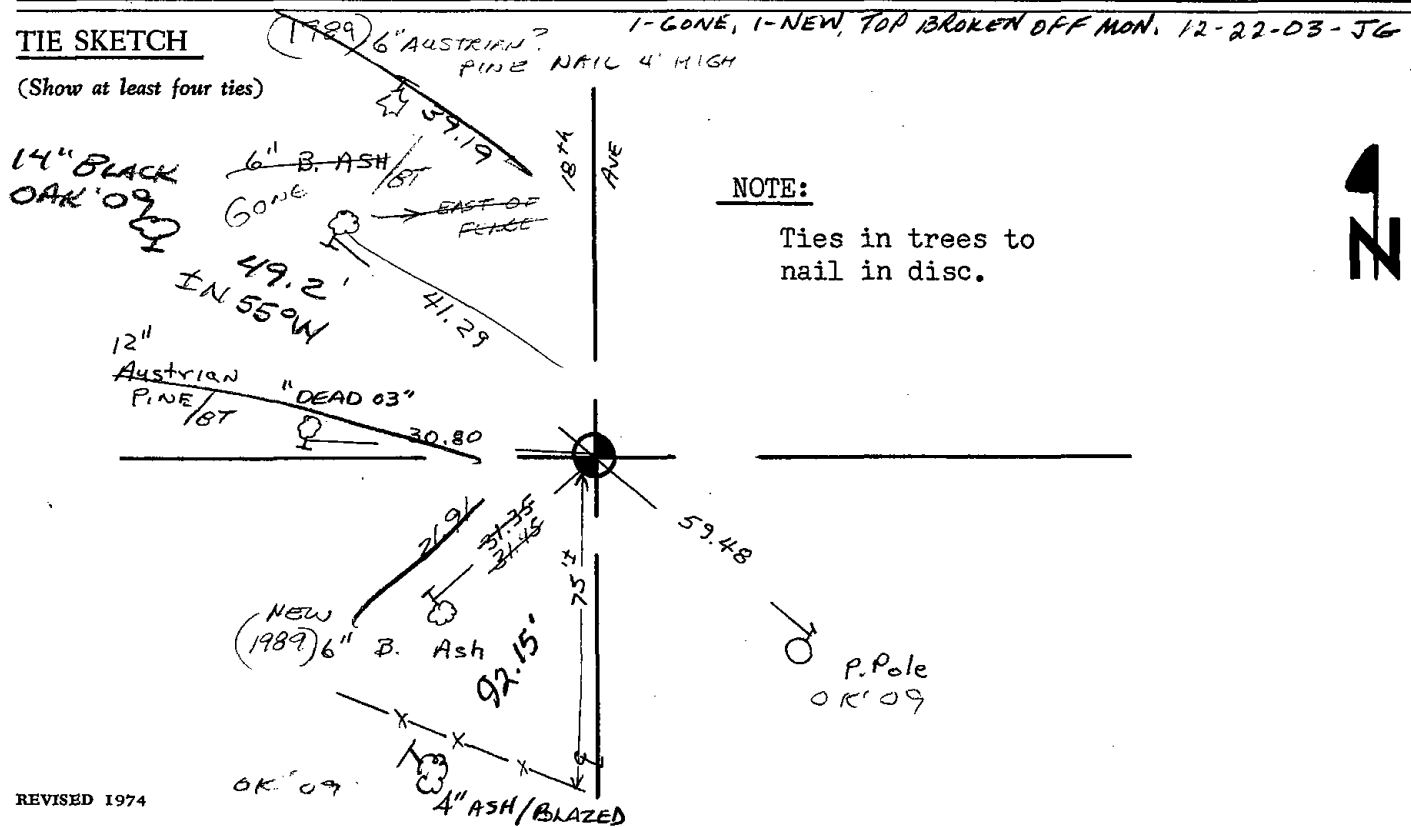
CERTIFIED CORRECT:

*Dale C. Hagen*  
Registered Land Surveyor

DATE: August 3, 1974

### TIE SKETCH

(Show at least four ties)



### NOTE:

Ties in trees to nail in disc.

