

33
SECTION

19
TOWN

05
RANGE

ADAMS COUNTY

COUNTY CORNER NO: 117

ROMPORTOL ID: 41905332000

PUBLIC LAND SURVEY MONUMENT RECORD

TYPE OF MONUMENT: HARRISON
ADAMS COUNTY COORDINATES, NAD 83 (2005)

N. 258438.140

E. 509673.971

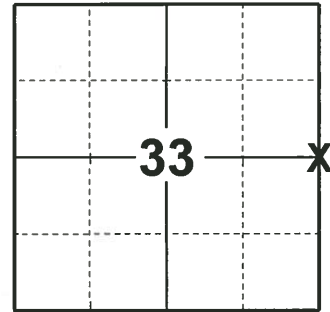
ELEVATION- - - - - DATUM - - - - -

FIELD WORK DATE: 11/11/2019

BASIS FOR MONUMENT LOCATION

1979 - PLS 878 NO RESURVEYS OF RECORD. NO VISIBLE POSSESSION LINES. ROAD IS CURVY. SET CORNER ON LINE AND EQUIDISTANT BETWEEN SECTION CORNERS, BY COMPUTED TRAVERSE.

2019 - PLS 2675 FOUND HARRISON FLUSH WITH THE GROUND SURFACE AND 2 WITNESS TREES. THE MONUMENT AGREES WITH BOTH WITNESS TREES. ACCEPTED THE HARRISON MONUMENT AS THE CORNER LOCATION. SET 4 NEW TIES AND MEASURED TO THE EXISTING WITNESSES.



LOCATION

(INDICATE CORNER BY "X")

SEAL:



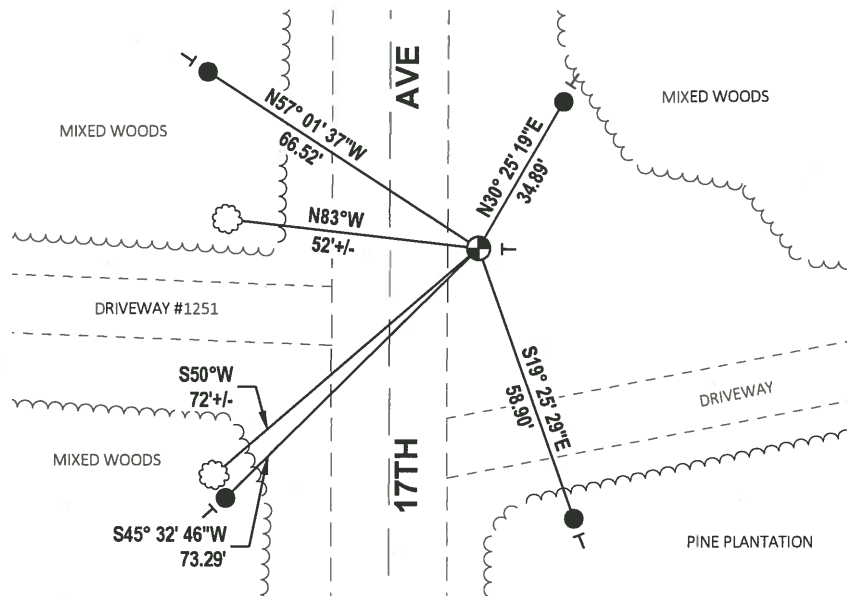
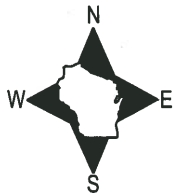
DATA SHOWN HERE ON THIS TIE SHEET IS CORRECT AND COMPLETE TO THE BEST OF MY KNOWLEDGE AND BELIEF.

PROFESSIONAL LAND SURVEYOR

DATE 11/9/2020

TIE SKETCH

NOTE: THE CORNER FALLS 18'± EAST OF 17TH AVE CENTERLINE.

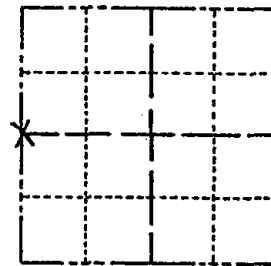


- SET 3/4" x 18" IRON REBAR, 1.50#/FT
- ⊕ FOUND HARRISON MONUMENT
- VINYL "T" POST
- ☼ WITNESS TREE

Government Land Corner Certificate

Adams County
 TYPE OF MONUMENT: HARRISON
 STATE PLANE COORDINATES: N _____
 E _____
 ELEVATION — M.S.L. DATUM: _____
 THETA ANGLE: _____
 FIELD BOOK: 74 PAGE 120
 DRAWN BY: N.J.

CORNER NO. 117
 SECTION 34
 TOWN 19
 RANGE 5



LOCATION
(Indicated by 'X')

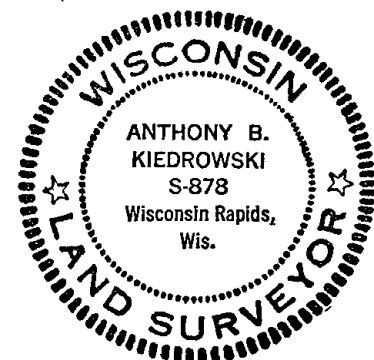
BASIS FOR MONUMENT LOCATION

Show info such as: History of corner, with reference to Vol. and pg., dates, surveyor; exact description of monument replaced; if location computed, by taped or EDM traverse; landowner remarks, etc. (Use reverse side if necessary)

No resurveys of record. No visible possession lines. Road is curvy. Set corner on line and equidistant between section corners, by computed traverse.

Ok 3-21-84 SS

SEAL:



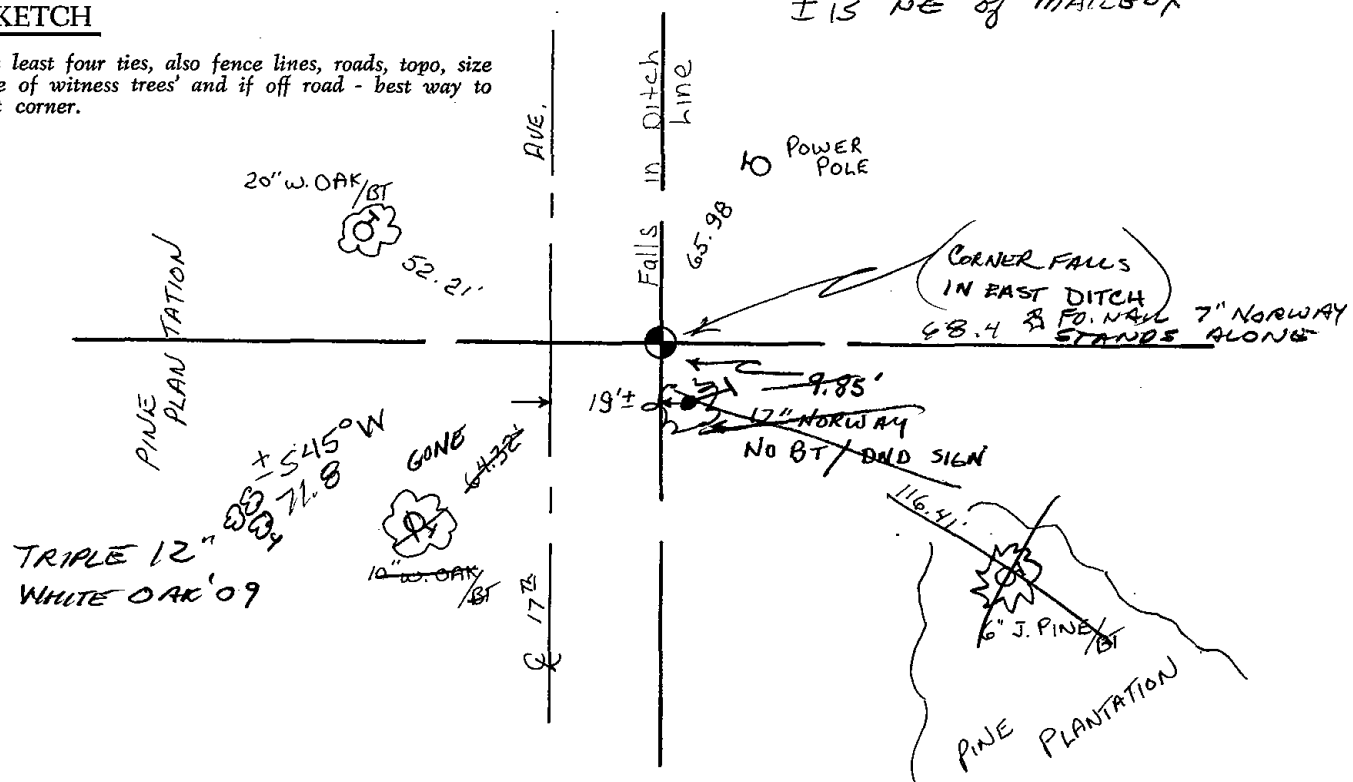
DATA SHOWN HERE ON CERTIFIED CORRECT:

Anthony B. Kiedrowski
Registered Land Surveyor

DATE: 11/2/79

TIE SKETCH

Show at least four ties, also fence lines, roads, topo, size and type of witness trees' and if off road - best way to arrive at corner.



± 15' NE of MAILBOX

