

## PUBLIC LAND SURVEY MONUMENT RECORD

TYPE OF MONUMENT: HARRISON (BROKEN-TOP)  
 ADAMS COUNTY COORDINATES, NAD 83 (2007)

N. 255797.775

E. 499106.251

ELEVATION- \_\_\_\_\_ DATUM \_\_\_\_\_

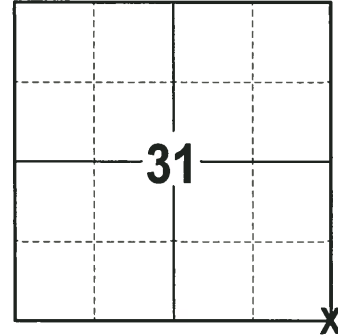
FIELD WORK DATE: 01/17/2018

### BASIS FOR MONUMENT LOCATION

1974 - PLS 1103 RAN EDM/TRANSIT TRAVERSE AROUND SECTION 32 AND FOUND A 1/2" BY 24" IRON ROD WITHIN THE SEARCH AREA OF THE SOUTHWEST CORNER. FOUND NO OTHER EVIDENCE OF THE CORNER. MONUMENTED THE LOCATION OF THE FOUND IRON ROD WITH A HARRISON MONUMENT AND TIED OUT.

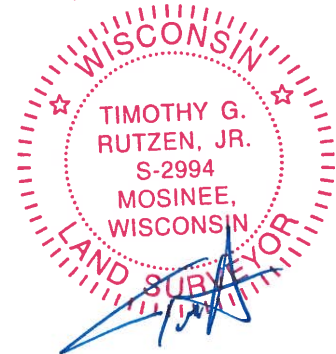
2010 - PLS 1473 STATES THE CORNER WAS BURIED 1.0' UNDER THE SURFACE. SET A 5" GALVANIZED LANDSCAPING SPIKE OVER THE TOP OF THE HARRISON AND RE-TIED.

2018 - PLS 2994 FOUND A SPIKE IN THE ROAD SURFACE, REMOVED THE SPIKE AND FOUND A HARRISON MONUMENT WITH A BROKEN-TOP 30" BELOW THE ROAD SURFACE AND 4 TIES. THE MONUMENT AGREES WITH THE EXISTING TIES. ACCEPTED THE HARRISON MONUMENT WITH A BROKEN-TOP AS THE CORNER LOCATION AND RE-MEASURED TO THE EXISTING TIES.



**LOCATION**  
 (INDICATE CORNER BY "X")

SEAL:

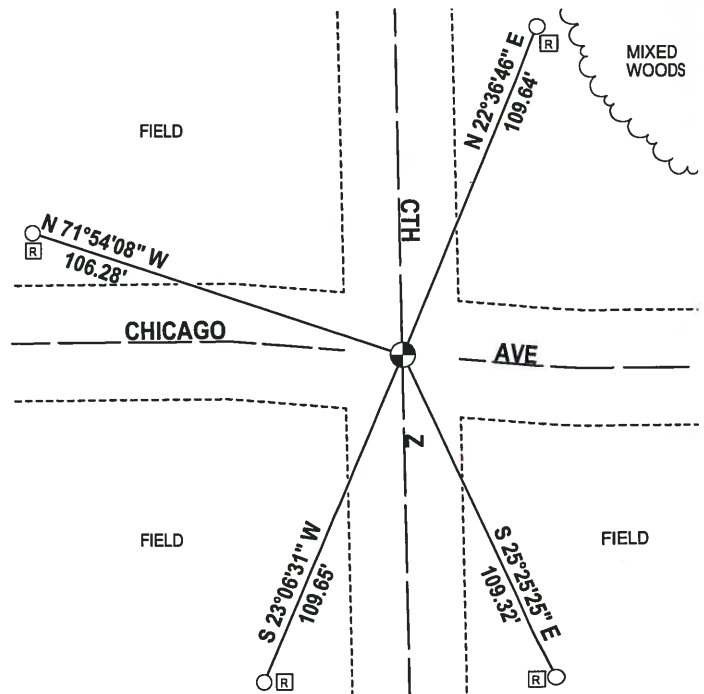
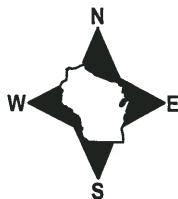


DATA SHOWN HERE ON THIS TIE SHEET IS CORRECT AND COMPLETE TO THE BEST OF MY KNOWLEDGE AND BELIEF.

PROFESSIONAL LAND SURVEYOR

DATE 3-1-18

### - TIE SKETCH



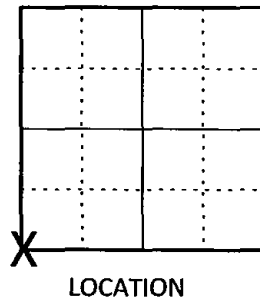
- 5/8" IRON ROD FOUND
- ⊕ HARRISON (BROKEN-TOP) FOUND
- Ⓜ RIGHT-OF-WAY GUARD POST

U.S PUBLIC LAND SURVEY MONUMENT RECORD  
ADAMS COUNTY, WISCONSIN

CORNER NO. 491 123  
SECTION 32  
TOWN 19 N  
RANGE 5 E

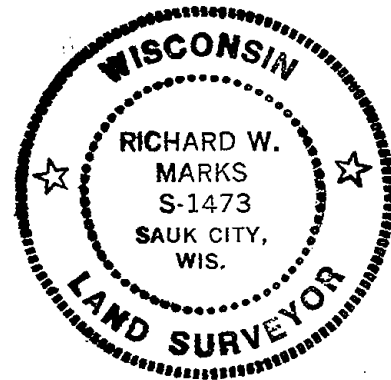
TYPE OF MONUMENT: 5" GALVANIZED LANDSCAPING SPIKE OVER HARRISON MON.  
ADAMS COUNTY COORDINATES:  
NORTH: 255797.74'  
EAST: 499106.21'

ELEVATION \_ MSL DATUM: NOT APPLICABLE  
THETA ANGLE: NOT APPLICABLE  
FIELD BOOK:  
DRAWN BY: DANIEL MARKS



BASIS FOR MONUMENT LOCATION  
On August 3, 1974 Dale C. Hagen found a 1/2" x 24" iron rod and set a Harrison monument. Corner was buried 1.0' under the surface so I set a 5" galvanized landscaping spike over the top of the monument.

SEAL

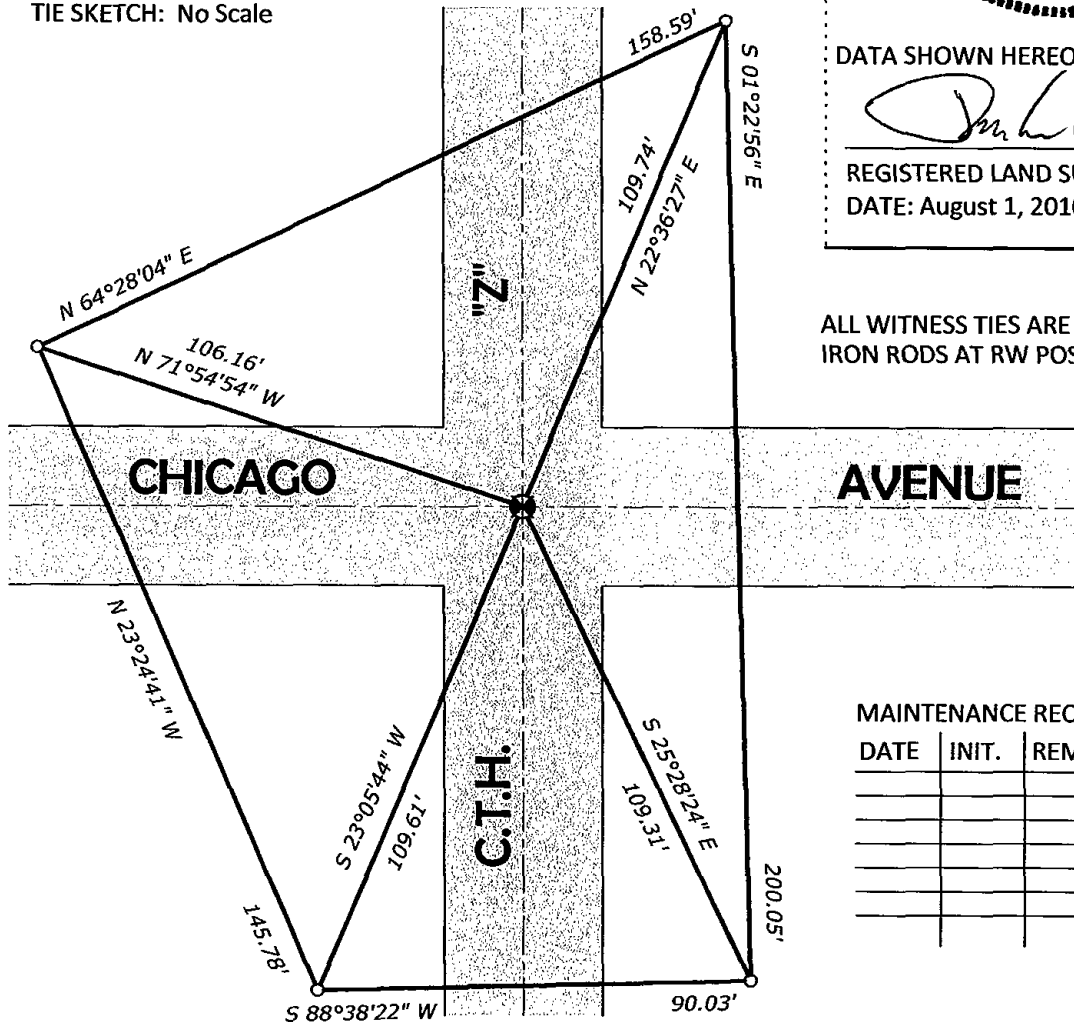


DATA SHOWN HEREON CERTIFIED CORRECT:

*Daniel Marks*

REGISTERED LAND SURVEYOR  
DATE: August 1, 2010

TIE SKETCH: No Scale



ALL WITNESS TIES ARE 5/8" IRON RODS AT RW POSTS

MAINTENANCE RECORD

DATE	INIT.	REMARKS

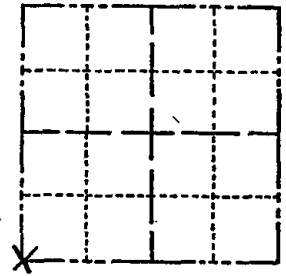


# ADAMS COUNTY

## Survey Monument Record

CORNER NO. 491  
SECTION 32  
TOWN 19  
RANGE 5

TYPE OF MONUMENT: Harrison Monument MAG NAIL @ LOCATION  
STATE PLANE COORDINATES: N \_\_\_\_\_  
E \_\_\_\_\_  
ELEVATION — M.S.L. DATUM: \_\_\_\_\_  
THETA ANGLE: \_\_\_\_\_  
FIELD BOOK: \_\_\_\_\_ PAGE \_\_\_\_\_



### BASIS FOR MONUMENT LOCATION

(Use reverse side if necessary)

Show info such as: History of corner, with reference to Vol. and pg, dates, surveyor; exact description of monument replaced; if location computed, by taped or EDM traverse; landowner remarks, etc.

SEAL: LOCATION (Indicated by 'X')

Ran EDM/transit traverse around Section 32 and found 1/2" by 24" Iron rod within search area of Southwest corner. Could find no other evidence as to the location of this corner.

Monumented location of Iron Rod found with Harrison monument.



OK 3-20-79 RN-SS

Map was updated on 3-21-84 SS See the reverse side for the updated map

CERTIFIED CORRECT:  
Dale C. Hagen  
Registered Land Surveyor  
DATE: August 3, 1974

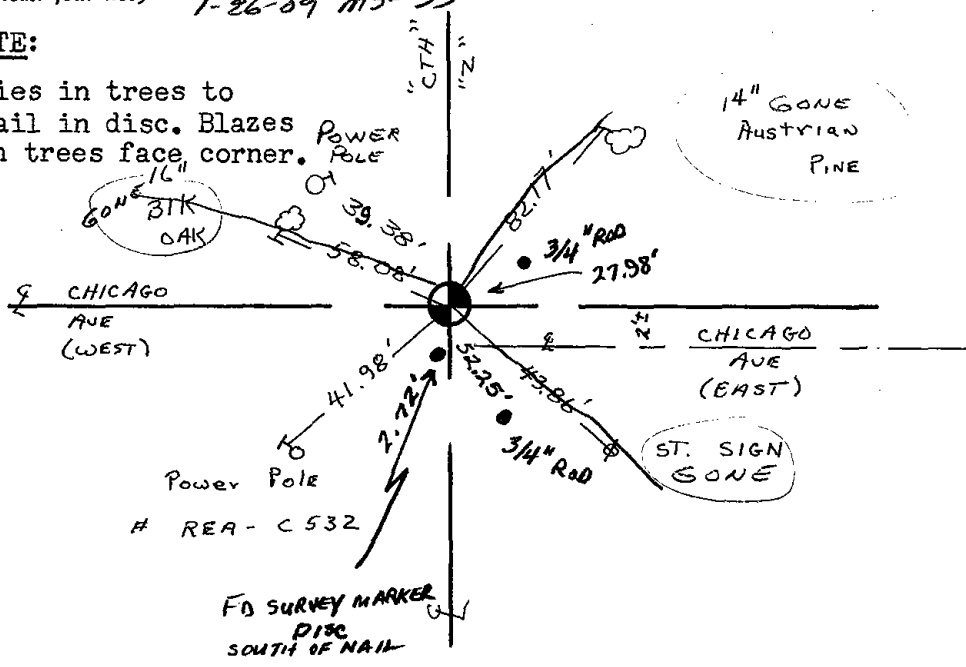
### TIE SKETCH

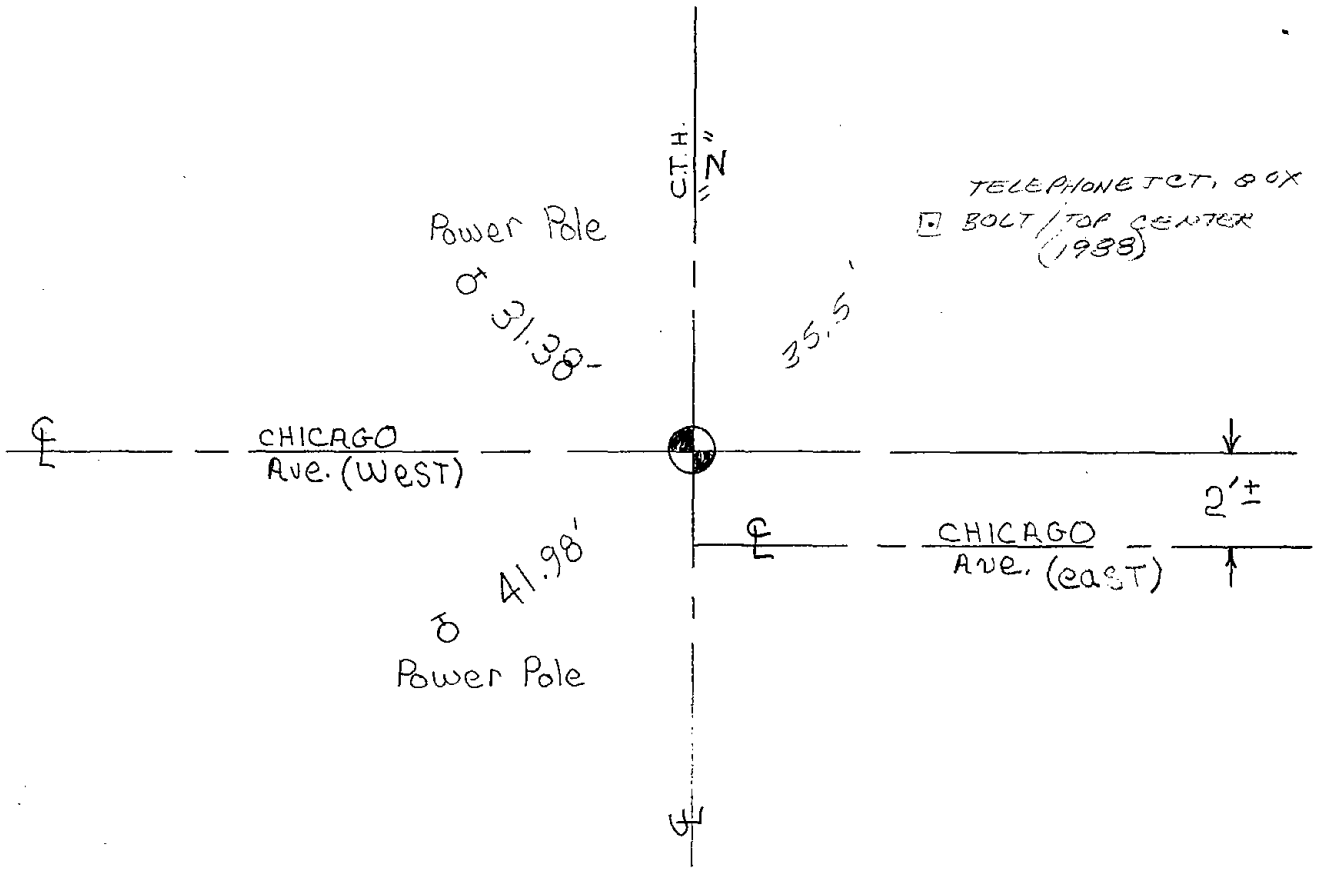
(Show at least four ties)

OK 1-25-99 - JG (SEE ATTACHED SHEET DTD 6-26-95)  
OK 12-22-03 - JG  
1-26-09 MS-SS

#### NOTE:

Ties in trees to nail in disc. Blazes in trees face corner.





OK 3-21-84 SS

ADD 1 TIE 11-28-88 SS  
OK 2-14-94 CR - JG

SEE TIE SHEET MC 6-26-95

**ADAMS COUNTY**

**Survey Monument Record**

TYPE OF MONUMENT: Harrison Monument

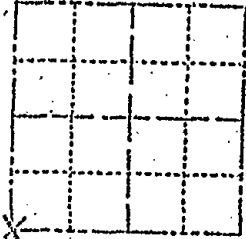
STATE PLANE COORDINATES: N \_\_\_\_\_  
E \_\_\_\_\_

ELEVATION — M.S.L. DATUM: \_\_\_\_\_

THETA ANGLE: \_\_\_\_\_

FIELD BOOK: \_\_\_\_\_ PAGE \_\_\_\_\_

CORNER NO. 3  
SECTION 32  
TOWN 19  
RANGE 5



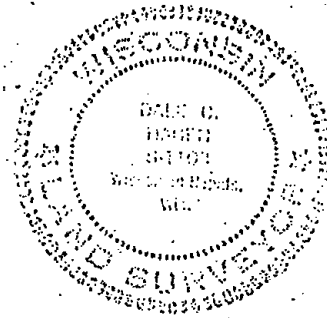
LOCATION  
(Indicated by 'X')

**BASIS FOR MONUMENT LOCATION**

(Use reverse side if necessary)

Show info such as: History of corner, with reference to Vol. and pg. dates, surveyor; exact description of monument replaced; if location computed, by taped or EDM traverse; landowner remarks, etc.

SEAL:



CERTIFIED CORRECT

Dale C. Haggen  
Registered Land Surveyor

DATE: August 3, 1974

6-26-95 New ties MC

**THE SKETCH**

(Show at least four ties)

**NOTE:**

Ties in trees to nail in disc. Blows in brass face corner.

