

32 SECTION 19 TOWN 05 RANGE

ADAMS COUNTY

COUNTY CORNER NO: 124
ROMPORTOL ID: 41905320020

PUBLIC LAND SURVEY MONUMENT RECORD

TYPE OF MONUMENT: HARRISON (BROKEN-TOP)
ADAMS COUNTY COORDINATES, NAD 83 (2007)

N. 255796.334

E. 501748.333

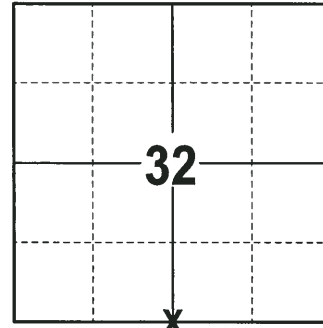
ELEVATION- DATUM

FIELD WORK DATE: 01/15/2018

BASIS FOR MONUMENT LOCATION

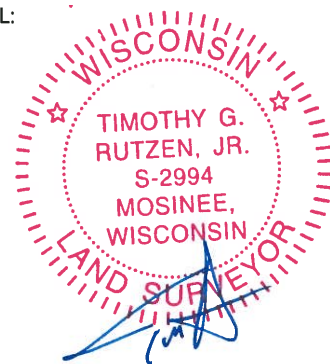
1974 - PLS 1103 EXCAVATED WITH A BACKHOE BUT FOUND NO EVIDENCE. RAN AN EDM/TRANSIT TRAVERSE AROUND SECTION 32 AND SET QUARTER CORNER EQUIDISTANT AND ON A LINE BETWEEN THE SOUTHEAST AND SOUTHWEST SECTION CORNERS. SET A HARRISON MONUMENT AT THE CORNER LOCATION AND TIED OUT.

2018 - PLS 2994 FOUND A HARRISON MONUMENT WITH A BROKEN-TOP 12" BELOW THE ROAD SURFACE. FOUND NO EVIDENCE OF ANY OF THE WITNESSES. ACCEPTED THE HARRISON MONUMENT WITH A BROKEN-TOP AS THE BEST EVIDENCE OF THE CORNER LOCATION. SET 4 NEW TIES AND MEASURED TO THE TIES.



LOCATION
(INDICATE CORNER BY "X")

SEAL:



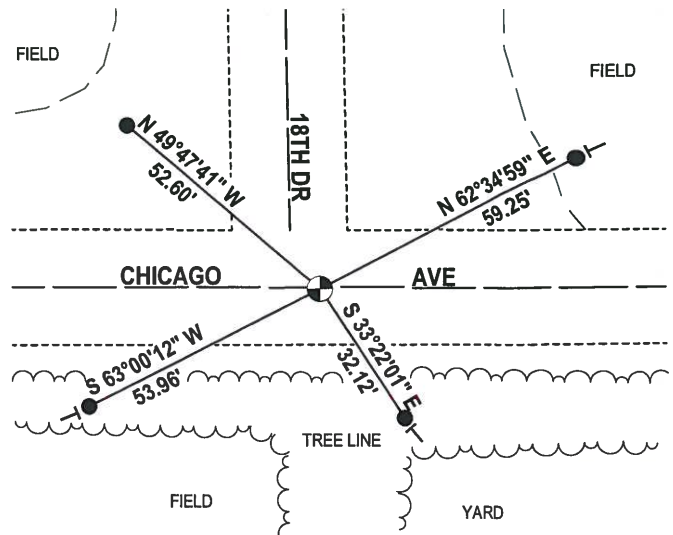
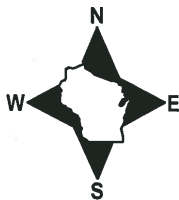
DATA SHOWN HERE ON THIS TIE SHEET IS CORRECT AND COMPLETE TO THE BEST OF MY KNOWLEDGE AND BELIEF.

PROFESSIONAL LAND SURVEYOR

DATE 3-1-18

- TIE SKETCH -

NOTE: THE CORNER FALLS 0.5'± SOUTH OF THE CENTERLINE OF CHICAGO AVE AND 6'± EAST OF THE CENTERLINE OF 18TH DR.



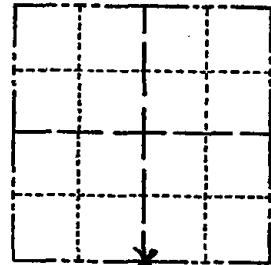
- 3/4" x 18" IRON REBAR SET, 1.50#/FT
- ⊕ HARRISON (BROKEN-TOP) FOUND
- VINYL "T" POST

ADAMS COUNTY

CORNER NO. 490
SECTION 32
TOWN 19
RANGE 5

Survey Monument Record

TYPE OF MONUMENT: HARRISON MONUMENT
STATE PLANE COORDINATES: N _____
E _____
ELEVATION — M.S.L. DATUM: _____
THETA ANGLE: _____
FIELD BOOK: _____ PAGE _____



LOCATION
(Indicated by 'X')

SEAL:

BASIS FOR MONUMENT LOCATION

(Use reverse side if necessary)

Show info such as: History of corner, with reference to Vol. and pg, dates, surveyor; exact description of monument replaced; if location computed, by taped or EDM traverse; landowner remarks, etc.

Excavated with backhoe but found no evidence of the South Quarter corner of Section 32.

Ran EDM/transit traverse around Section 32 and set Quarter corner equidistant and on line between Southeast and Southwest section corners.



CERTIFIED CORRECT:

Dale C. Hagen
Registered Land Surveyor
DATE: August 3, 1974

OK 3-20-79 RN-SS
OK 2-14-74 CR-JG
OK 3-21-84 SS
OK 11-29-88-SS
OK 1-25-99-JG

TIE SKETCH *OK 12-22-03-JG*
3 TIES REMAIN 4-7-09 SS

(Show at least four ties)

NOTE:

Ties in trees to nail in disc.

