

PUBLIC LAND SURVEY MONUMENT RECORD

TYPE OF MONUMENT: HARRISON (BROKEN-TOP)
 ADAMS COUNTY COORDINATES, NAD 83 (2007)

N. 255794.924

E. 504390.493

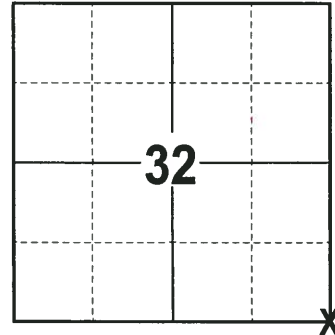
ELEVATION- --- DATUM ---

FIELD WORK DATE: 01/15/2018

BASIS FOR MONUMENT LOCATION

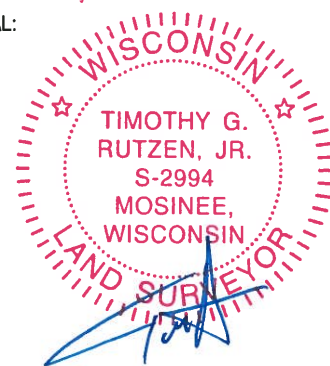
1974 - PLS 1103 RAN EDM/TRANSIT TRAVERSE AROUND SECTION 32. EXCAVATED WITH A BACKHOE IN THE SEARCH AREA AND A LOT OF WOOD WAS FOUND, BUT NO DEFINITIVE EVIDENCE AS TO THE LOCATION OF THE CORNER. THE CORNER WAS RELOCATED AND MONUMENTED USING THE ORIGINAL NOTES AND EVIDENCE FROM ADJACENT SECTIONS. SET A HARRISON MONUMENT AT THE CORNER LOCATION AND TIED OUT.

2018 - PLS 2994 FOUND A HARRISON MONUMENT WITH A BROKEN-TOP 8" BELOW THE ROAD SURFACE, 1 TIE AND 1 PROPERTY IRON. THE MONUMENT AGREES WITH THE EXISTING TIE. ACCEPTED THE HARRISON MONUMENT WITH A BROKEN-TOP AS THE CORNER LOCATION. SET 2 NEW TIES AND MEASURED TO THE TIES AND PROPERTY IRON.



LOCATION
 (INDICATE CORNER BY "X")

SEAL:



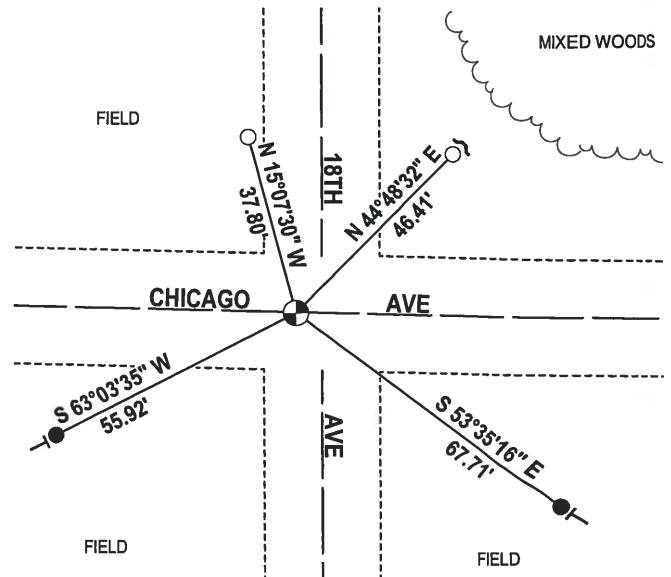
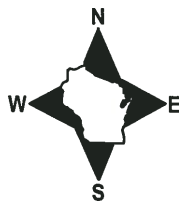
DATA SHOWN HERE ON THIS TIE SHEET IS CORRECT AND COMPLETE TO THE BEST OF MY KNOWLEDGE AND BELIEF.

PROFESSIONAL LAND SURVEYOR

DATE 3-1-18

- TIE SKETCH

NOTE: THE CORNER FALLS 5± WEST OF THE CENTERLINE OF 18TH AVE.



- 3/4" x 18" IRON REBAR SET, 1.50#/FT
- 3/4" IRON ROD FOUND
- ⊕ HARRISON (BROKEN-TOP) FOUND
- ↗ STEEL FENCE POST
- VINYL "T" POST

ADAMS COUNTY

Survey Monument Record

TYPE OF MONUMENT: HARRISON MONUMENT

STATE PLANE COORDINATES: N _____

E _____

ELEVATION — M.S.L. DATUM: _____

THETA ANGLE: _____

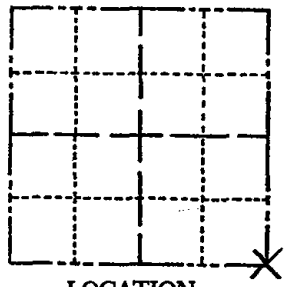
FIELD BOOK: _____ PAGE _____

CORNER NO. 489

SECTION 32

TOWN 19

RANGE 5



LOCATION
(Indicated by 'X')

BASIS FOR MONUMENT LOCATION

(Use reverse side if necessary)

Show info such as: History of corner, with reference to Vol. and pg, dates, surveyor; exact description of monument replaced; if location computed, by taped or EDM traverse; landowner remarks, etc.

SEAL:



Ran EDM/transit traverse around Section 32.
Excavated with backhoe in search area and much wood was found, but no definitive evidence as to the location of the corner was found.

Corner was relocated and monumented using original notes and evidence from adjacent sections.

OK 2-14-94 CR-34
TOP BROKEN 3-20-79 RN-SS

Ok 3-21-84 SS

3 NEW TIES 7-7-89 SS-MK
OK 12-22-03-JG

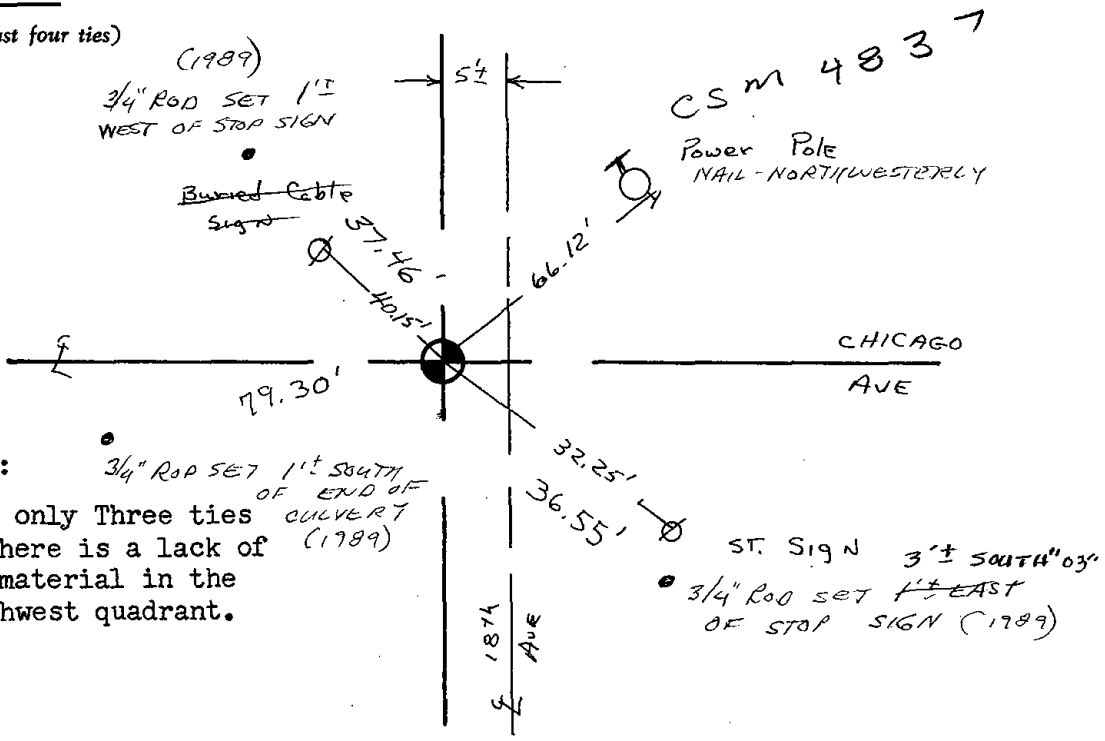
CERTIFIED CORRECT:

Dale C. Hagen
Registered Land Surveyor

DATE: August 3, 1974

TIE SKETCH 1-14-09SS

(Show at least four ties)



NOTE: 3/4" Rod set 1' SOUTH OF END OF CULVERT (1989)
Took only Three ties as there is a lack of tie material in the Southwest quadrant.

