

PUBLIC LAND SURVEY MONUMENT RECORD

TYPE OF MONUMENT: HARRISON
ADAMS COUNTY COORDINATES, NAD 83 (2007)

N. 255796.789

E. 512325.935

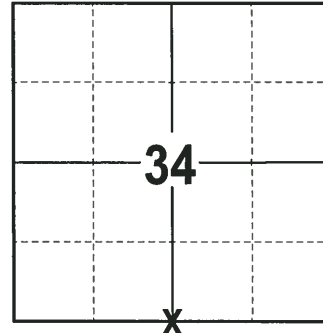
ELEVATION- DATUM

FIELD WORK DATE: 01/15/2018

BASIS FOR MONUMENT LOCATION

2014 - PLS 2443 STATES THAT THE LAST TIE SHEET ON FILE FOR THIS CORNER IS DATED OCTOBER 6, 1979 BY ANTHONY B. KIEDROWSKI, PLS 878. KIEDROWSKI STATES THAT HE EXCAVATED THE AREA AND FOUND THE REMAINS OF A 4" DIAMETER WOOD POST AT THE CORNER LOCATION AND REPLACED IT WITH A HARRISON MONUMENT. NUMEROUS NOTATIONS BY OTHER SURVEYORS ALSO APPEAR ON THE TIE SHEET. FOUND THE HARRISON MONUMENT AS NOTED BY KIEDROWSKI AND ESTABLISHED REFERENCE TIES TO PERPETUATE THE CORNER LOCATION.

2018 - PLS 2994 FOUND A HARRISON MONUMENT 10" BELOW THE ROAD SURFACE, 2 TIES AND 4 WITNESS TREES. THE MONUMENT AGREES WITH THE EXISTING TIES AND WITNESS TREES. ACCEPTED THE HARRISON MONUMENT AS THE CORNER LOCATION. SET 2 NEW TIES AND MEASURED TO THE TIES AND WITNESS TREES.



LOCATION
(INDICATE CORNER BY "X")

SEAL:



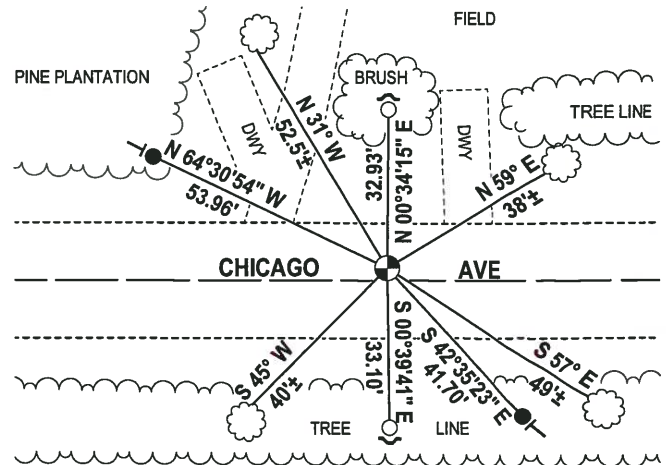
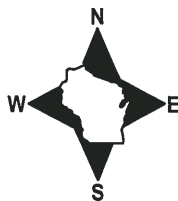
DATA SHOWN HERE ON THIS TIE SHEET IS CORRECT AND COMPLETE TO THE BEST OF MY KNOWLEDGE AND BELIEF.

PROFESSIONAL LAND SURVEYOR

DATE 3-1-18

- TIE SKETCH

NOTE: THE CORNER FALLS 3'± NORTH OF THE CENTERLINE OF CHICAGO AVE.



- 3/4" x 18" IRON REBAR SET, 1.50#/FT
- 3/4" IRON ROD FOUND
- ⊙ HARRISON FOUND
- ✓ STEEL FENCE POST
- └ VINYL "T" POST
- ☁ WITNESS TREE FOUND

ADAMS COUNTY SURVEY MONUMENT RECORD

TYPE OF MONUMENT: STD. HARRISON CAST IRON
 ADAMS COUNTY COORDINATES: N = 255,796.71'
 E = 512,326.02'

DATUM: NAD '83/2007 ADJ.-GPS AND CONVENTIONAL CONTROL

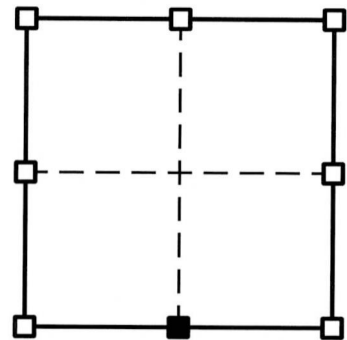
WITNESSES TO CORNER LOCATION: *TODD T. RUMMLER, MARK A. MAHONEY*

BASIS FOR MONUMENT LOCATION

SHOW INFO SUCH AS: HISTORY OF CORNER, WITH REFERENCE TO VOL. AND PG., DATES, SURVEYOR; EXACT DESCRIPTION OF MONUMENT REPLACED; IF LOCATION COMPUTED, BY TAPED OR EDM TRAVERSE; LANDOWNER REMARKS, ETC.

THE LAST TIE SHEET ON FILE FOR THIS CORNER IS DATED OCTOBER 6, 1979 BY ANTHONY B. KIEDROWSKI, R.L.S. 878. KIEDROWSKI STATES HE EXCAVATED THE AREA AND FOUND THE REMAINS OF A 4" DIA. WOOD POST AT THIS CORNER AND REPLACED THE POST WITH A HARRISON MONUMENT. NUMEROUS NOTATIONS BY OTHER SURVEYORS ALSO APPEAR ON THE TIE SHEET. I FOUND THE STANDARD HARRISON CAST IRON MONUMENT AS NOTED BY KIEDROWSKI AND ESTABLISHED REFERENCE TIES AS SHOWN BELOW TO PERPETUATE THE CORNER LOCATION.

CORNER No. 128
 SECTION 34
 TOWN 19N
 RANGE 5E



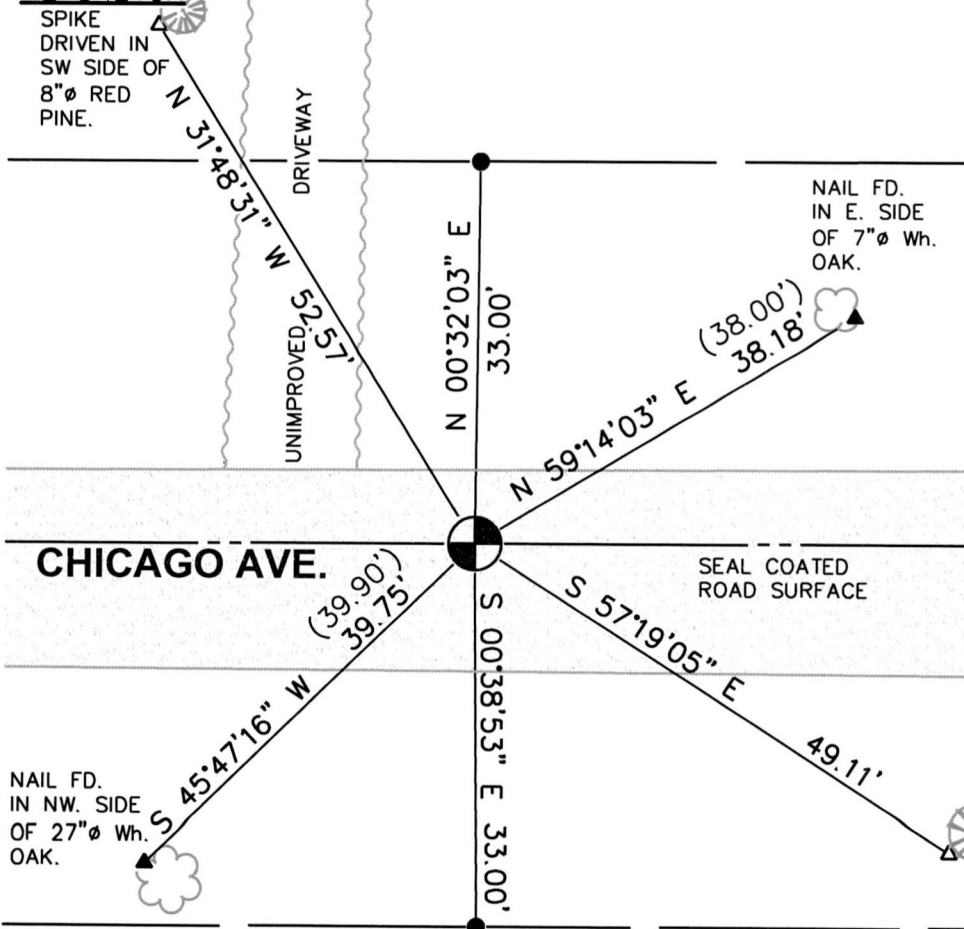
■ = CORNER LOCATION

AFFIX LAND SURVEYOR SEAL



I, TODD T. RUMMLER, PLS-2443 CERTIFY THAT THE CORNER LOCATION SHOWN ON THIS RECORD WAS DETERMINED BY ME OR UNDER MY DIRECTION AND CONTROL AND THAT THIS ADAMS COUNTY SURVEY MONUMENT RECORD IS CORRECT AND COMPLETE TO THE BEST OF MY KNOWLEDGE AND BELIEF.

TIE SKETCH



LEGEND

- FOUND STD. HARRISON CAST IRON MONUMENT- SE CORNER SECTION 34, T19N, R5E
- SET 3/4"Ø X 24" LONG REBAR WT. = 1.502 LBS./LN.FT.
- SET 1/2"Ø X 4" LONG COTTON GIN SPIKE
- NAIL FOUND
- FOUND 3/4"Ø REBAR
- () RECORDED AS



NOT TO SCALE