

## PUBLIC LAND SURVEY MONUMENT RECORD

TYPE OF MONUMENT: HARRISON  
 ADAMS COUNTY COORDINATES, NAD 83 (2007)

N. 255811.987

E. 520269.548

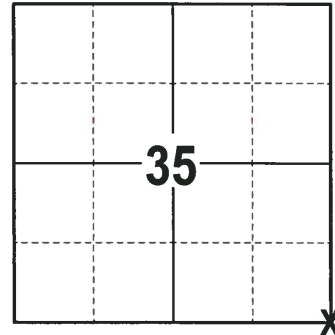
ELEVATION- --- DATUM ---

FIELD WORK DATE: 01/16/2018

### BASIS FOR MONUMENT LOCATION

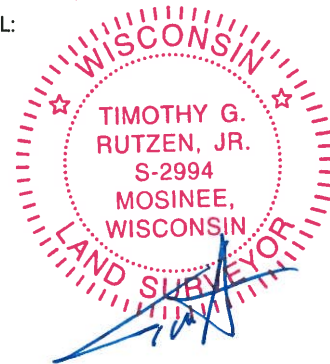
1979 - PLS 878 FOUND CONCRETE REFERENCE MONUMENTS. EXCAVATED A 2'X4' HOLE WITH A BACKHOE AT THE CORNER LOCATION AND FOUND THAT THE SOIL HAD NOT BEEN PREVIOUSLY DISTURBED. NO RECORDS AVAILABLE TO INDICATE HOW THE CORNER WAS ESTABLISHED. SET A HARRISON AND RE-TIED THE CORNER.

2018 - PLS 2994 FOUND A HARRISON MONUMENT 2" BELOW THE ROAD SURFACE, 1 TIE AND 1 WITNESS. THE MONUMENT AGREES WITH THE EXISTING TIE AND WITNESS. ACCEPTED THE HARRISON MONUMENT AS THE CORNER LOCATION. SET 3 NEW TIES AND MEASURED TO THE TIES AND WITNESS.



**LOCATION**  
 (INDICATE CORNER BY "X")

SEAL:



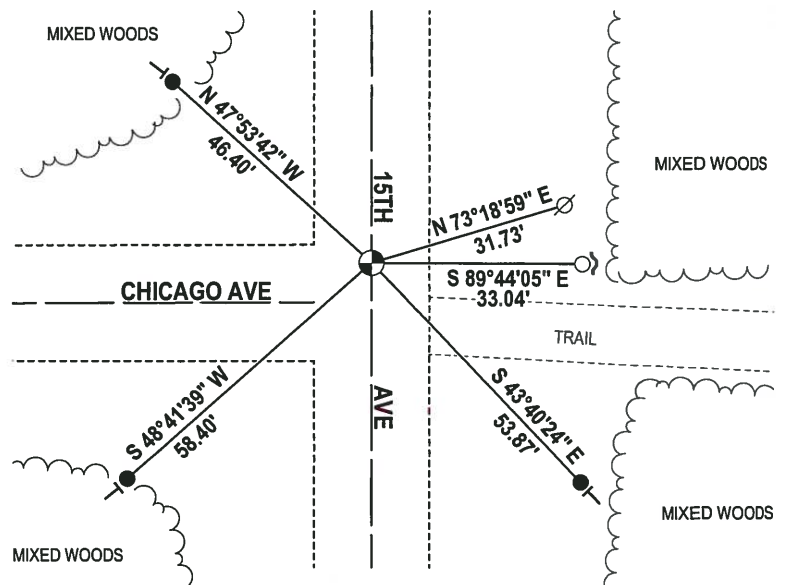
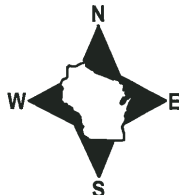
DATA SHOWN HERE ON THIS TIE SHEET IS CORRECT AND COMPLETE TO THE BEST OF MY KNOWLEDGE AND BELIEF.

PROFESSIONAL LAND SURVEYOR

DATE 3-1-18

### - TIE SKETCH

NOTE: THE CORNER FALLS 8± NORTH OF THE CENTERLINE OF CHICAGO AVE.



- 3/4" x 18" IRON REBAR SET, 1.50#/FT
- 3/4" IRON ROD FOUND
- ⊗ HARRISON FOUND
- ⊘ WITNESS POWER POLE FOUND
- ~ STEEL FENCE POST
- | VINYL "T" POST

# Government Land Corner Certificate

Adams County

TYPE OF MONUMENT: Harrison standard

STATE PLANE COORDINATES: N \_\_\_\_\_  
E \_\_\_\_\_

ELEVATION — M.S.L. DATUM: \_\_\_\_\_

THETA ANGLE: \_\_\_\_\_

FIELD BOOK: 102 PAGE 60

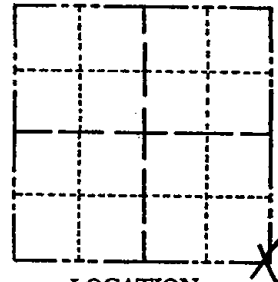
DRAWN BY: N.J.

CORNER NO. 131

SECTION 35

TOWN 19

RANGE 5



LOCATION  
(Indicated by 'X')

## BASIS FOR MONUMENT LOCATION

Show info such as: History of corner, with reference to Vol. and pg., dates, surveyor; exact description of monument replaced; if location computed, by taped or EDM traverse; landowner remarks, etc. (Use reverse side if necessary)

Found concrete reference monuments and set corner as stamped thereon. Excavated 2' x 4' hole with backhoe at this location and found that the soil had not been previously disturbed. No records available to indicate how corner was established.

Ok 3-21-84 SS  
 OK 2-14-94 CR-JG  
 OK, 2-10-98 JG  
 1-GONE, 2-NEW, 1-02-03-JG  
 2-19-04 - SH & MLC  
 1-14-09 SS

SEAL:



DATA SHOWN HERE ON  
CERTIFIED CORRECT:

*Anthony B. Kiedrowski*  
Registered Land Surveyor

DATE: 11/2/79

## TIE SKETCH

Show at least four ties, also fence lines, roads, topo, size and type of witness trees and if off road - best way to arrive at corner.

