

PUBLIC LAND SURVEY MONUMENT RECORD

TYPE OF MONUMENT: HARRISON (BROKEN-TOP)
ADAMS COUNTY COORDINATES, NAD 83 (2007)

N. 287634.582

E. 541343.896

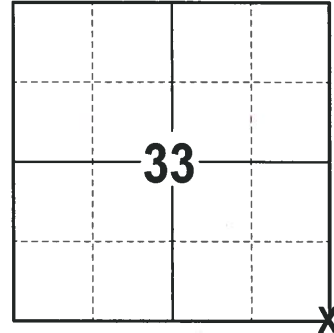
ELEVATION- --- DATUM ---

FIELD WORK DATE: 02/07/2018

BASIS FOR MONUMENT LOCATION

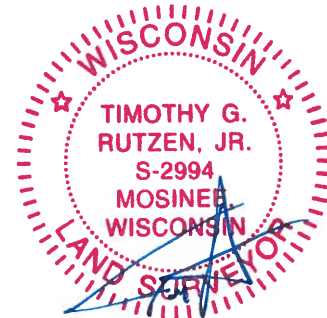
1975 - PLS 878 EXCAVATED WITH A BACKHOE AND FOUND THE BOTTOM 10" OF A POINTED 3" DIAMETER WOOD STAKE. REPLACED SAME WITH A HARRISON MONUMENT, LOCATION VERIFIED BY AN EDM TRAVERSE OF THE ENTIRE SECTION.

2018 - PLS 2994 FOUND A HARRISON MONUMENT WITH A BROKEN-TOP 8" BELOW THE ROAD SURFACE AND 1 TIE. THE MONUMENT AGREES WITH THE EXISTING TIE. ACCEPTED THE HARRISON MONUMENT WITH A BROKEN-TOP AS THE CORNER LOCATION. SET 3 NEW TIES AND MEASURED TO THE TIES.



LOCATION
(INDICATE CORNER BY "X")

SEAL:



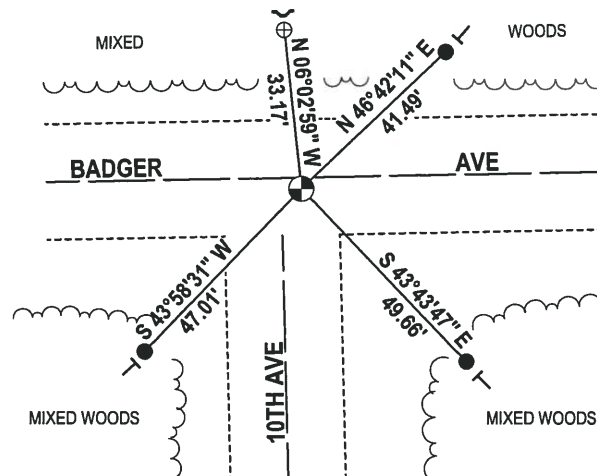
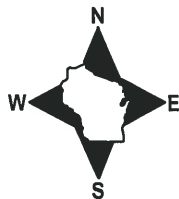
DATA SHOWN HERE ON THIS TIE SHEET IS CORRECT AND COMPLETE TO THE BEST OF MY KNOWLEDGE AND BELIEF.

PROFESSIONAL LAND SURVEYOR

DATE 3-1-18

- TIE SKETCH -

NOTE: THE CORNER FALLS 2± SOUTH OF THE CENTERLINE OF BADGER AVE AND 9± EAST OF THE CENTERLINE OF 10TH AVE.



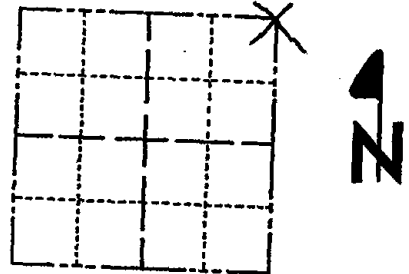
- ⊕ 1-1/2" O.D. GALVANIZED PIPE FOUND
- 3/4" x 18" IRON REBAR SET, 1.50#/FT
- ⊕ HARRISON (BROKEN-TOP) FOUND
- VINYL "T" POST
- ↙ EXISTING STEEL FENCE POST

ADAMS COUNTY

Survey Monument Record

CORNER NO. 798 (7)
 SECTION 4
 TOWN 19
 RANGE 6

TYPE OF MONUMENT: Harrison standard
 STATE PLANE COORDINATES: N _____
 E _____
 ELEVATION — M.S.L. DATUM: _____
 THETA ANGLE: _____
 FIELD BOOK: 101 PAGE 10



LOCATION
(Indicated by 'X')

SEAL:



BASIS FOR MONUMENT LOCATION

(Use reverse side if necessary)

Show info such as: History of corner, with reference to Vol. and pg, dates, surveyor; exact description of monument replaced; if location computed, by taped or EDM traverse; landowner remarks, etc.

Excavated with backhoe, found bottom 10" of pointed 3" dia wood stake. Replaced same with Harrison. Location verified by an EDM traverse of the entire section.

OK 11-24-78 DA-SS
 " 4-13-83 GR-SS
 " 1-26-88 GR

TOP BROKEN OFF MON. — NEW DISTANCES, 3-NEW TIES 1-593 JG, BS CERTIFIED CORRECT:
 OK, 2-12-98 - JG
 2-GONE, 3-NEW, 1-28-03 - JG
 OK, 11-14-07 - JG-SS
 Registered Land Surveyor
 DATE: 11/31/75

TIE SKETCH

(Show at least four ties)

Ties are to nails in scribed trees.

