

34
SECTION

20
TOWN

06
RANGE

ADAMS COUNTY

COUNTY CORNER NO: 128
ROMPORTOL ID: 42006340020

PUBLIC LAND SURVEY MONUMENT RECORD

TYPE OF MONUMENT: HARRISON (BROKEN-TOP)
ADAMS COUNTY COORDINATES, NAD 83 (2007)

N. 287698.399

E. 543996.954

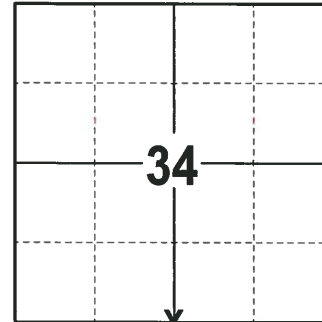
ELEVATION- DATUM

FIELD WORK DATE: 02/07/2018

BASIS FOR MONUMENT LOCATION

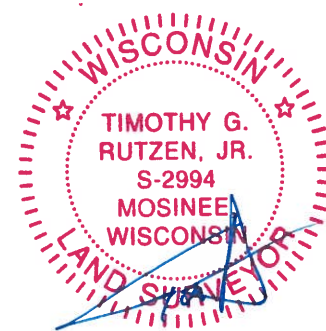
1979 - PLS 878 EXCAVATED THE AREA WITH A BACKHOE AND FOUND NOTHING. CALCULATED CORNER ON LINE EQUIDISTANT BETWEEN SECTION CORNERS. NO RESURVEYS ON RECORD AND ABSOLUTELY NO EVIDENCE OF POSSESSION LINES IN THE AREA. SET A HARRISON MONUMENT AND TIED OUT.

2018 - PLS 2994 FOUND A HARRISON MONUMENT WITH A BROKEN-TOP 8" BELOW THE ROAD SURFACE AND 2 TIES. THE MONUMENT AGREES WITH THE EXISTING TIES. ACCEPTED THE HARRISON MONUMENT WITH A BROKEN-TOP AS THE CORNER LOCATION. SET 2 NEW TIES AND MEASURED TO THE TIES.



LOCATION
(INDICATE CORNER BY "X")

SEAL:



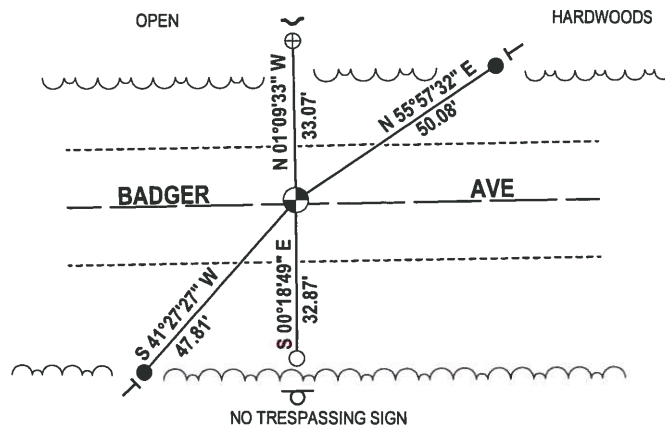
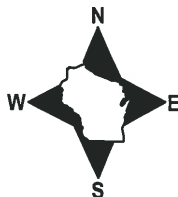
DATA SHOWN HERE ON THIS TIE SHEET IS CORRECT AND COMPLETE TO THE BEST OF MY KNOWLEDGE AND BELIEF.

PROFESSIONAL LAND SURVEYOR

DATE 3-1-18

- TIE SKETCH

NOTE: THE CORNER FALLS 1 1/2" NORTH OF THE CENTERLINE OF BADGER AVE.



- 1.0" O.D. IRON PIPE FOUND
- ⊕ 2-3/8" O.D. IRON PIPE FOUND
- 3/4" x 18" IRON REBAR SET, 1.50#/FT
- ⊕ HARRISON (BROKEN-TOP) FOUND
- └ VINYL "T" POST
- ┌ EXISTING STEEL FENCE POST

Government Land Corner Certificate

Adams County

CORNER NO. 8
 SECTION 3
 TOWN 19
 RANGE 6

TYPE OF MONUMENT: Harrison

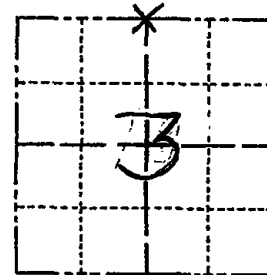
STATE PLANE COORDINATES: N _____
 E _____

ELEVATION — M.S.L. DATUM: _____

THETA ANGLE: _____

FIELD BOOK: 74 PAGE 129

DRAWN BY: N.J.



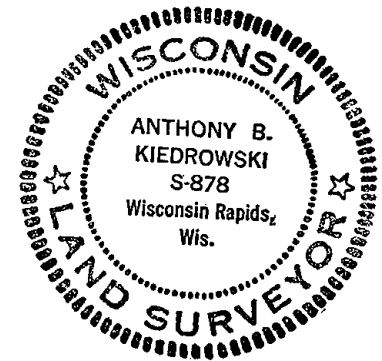
LOCATION
(Indicated by 'X')

BASIS FOR MONUMENT LOCATION

Show info such as: History of corner, with reference to Vol. and pg., dates, surveyor; exact description of monument replaced; if location computed, by taped or EDM traverse; landowner remarks, etc. (Use reverse side if necessary)

Excavated area with backhoe. Found nothing. Corner set on line equidistant between section corners. No resurveys on record and absolutely no evidence of possession lines in area.

SEAL:



DATA SHOWN HERE ON
CERTIFIED CORRECT:

Anthony B. Kiedrowski
Registered Land Surveyor

DATE: 11/19/79

TIE SKETCH

Show at least four ties, also fence lines, roads, topo, size and type of witness trees and if off road - best way to arrive at corner.

