

04 SECTION 19 TOWN 06 RANGE

ADAMS COUNTY

COUNTY CORNER NO: 17
 ROMPORTOL ID: 41906042000

PUBLIC LAND SURVEY MONUMENT RECORD

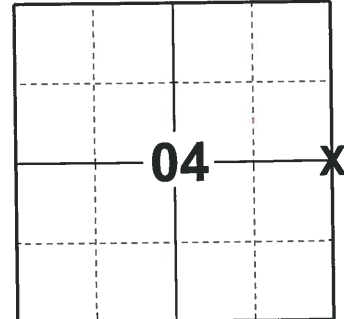
TYPE OF MONUMENT: HARRISON (BROKEN-TOP)
 ADAMS COUNTY COORDINATES, NAD 83 (2007)

N. 284955.192

E. 541368.472

ELEVATION- DATUM

FIELD WORK DATE: 11/27/2018



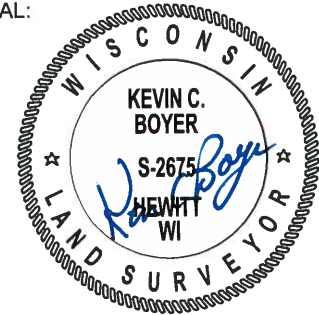
LOCATION
(INDICATE CORNER BY "X")

BASIS FOR MONUMENT LOCATION

1976 - PLS 1103 RAN EDM/TRANSIT TRAVERSE AROUND SECTIONS 4, 5 AND PART OF SECTION 6 TO DETERMINE SEARCH AREAS. EXCAVATION WITH A BACKHOE YIELDED NO EVIDENCE OF THE ORIGINAL CORNER OR ANY REMONUMENTATION. CALCULATED THE CORNER LOCATION ON LINE AND PROPORTIONAL TO ORIGINAL NOTES BETWEEN ADJACENT SECTION CORNERS. SET A HARRISON MONUMENT AT THE CALCULATED LOCATION AND TIED OUT.

2018 - PLS 2675 FOUND A HARRISON MONUMENT WITH A BROKEN-TOP 10" BELOW THE EDGE OF THE ROAD AND 1 TIE. THE MONUMENT AGREES WITH THE EXISTING TIE. ACCEPTED THE HARRISON MONUMENT WITH A BROKEN-TOP AS THE CORNER LOCATION. SET 3 NEW TIES AND MEASURED TO THE TIES.

SEAL:



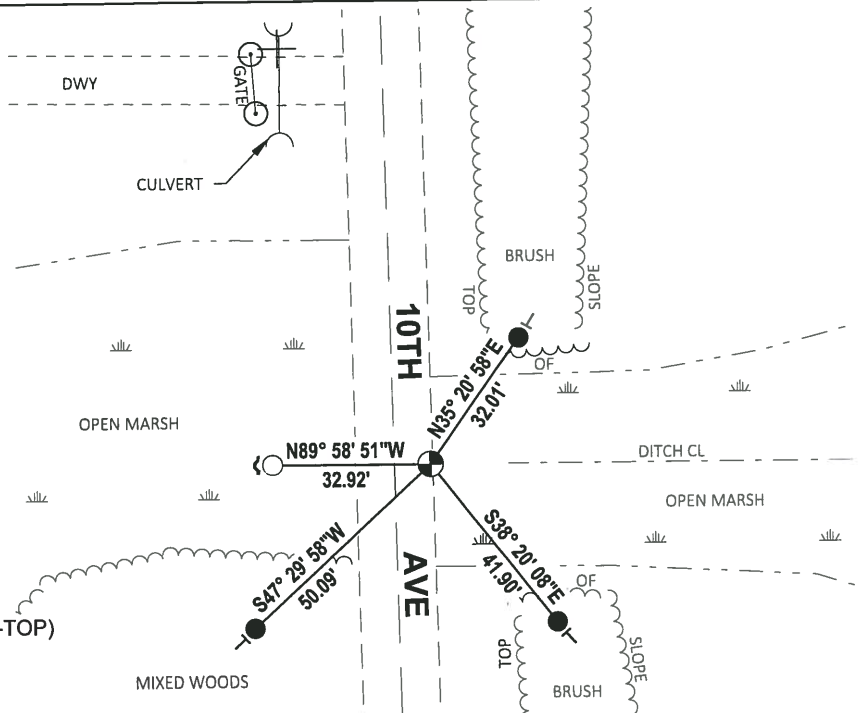
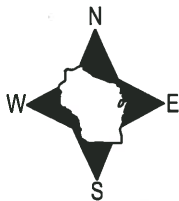
DATA SHOWN HERE ON THIS TIE SHEET IS CORRECT AND COMPLETE TO THE BEST OF MY KNOWLEDGE AND BELIEF.

PROFESSIONAL LAND SURVEYOR

DATE 1-18-19

- TIE SKETCH

NOTE: THE CORNER FALLS 8± EAST OF THE CENTERLINE OF 10TH AVE.



- SET 3/4" x 18" IRON REBAR, 1.50#/FT
- FOUND 3/4" IRON ROD
- ⊕ FOUND HARRISON MONUMENT (BROKEN-TOP)
- ↗ STEEL FENCE POST
- VINYL "T" POST

ADAMS COUNTY

Survey Monument Record

TYPE OF MONUMENT: Standard Harrison

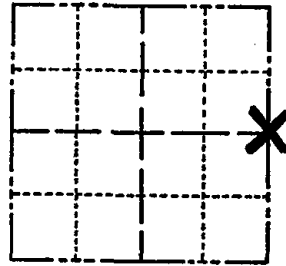
STATE PLANE COORDINATES: N _____
E _____

ELEVATION — M.S.L. DATUM: _____

THETA ANGLE: _____

FIELD BOOK: _____ PAGE _____

CORNER NO. 786 ⁽¹⁷⁾
SECTION 4
TOWN 19
RANGE 6



LOCATION
(Indicated by 'X')

SEAL:

BASIS FOR MONUMENT LOCATION

(Use reverse side if necessary)

Show info such as: History of corner, with reference to Vol. and pg, dates, surveyor; exact description of monument replaced; if location computed, by taped or EDM traverse; landowner remarks, etc.

Ran EDM/transit traverse around Sections 4 and 5, and part of Section 6, to determine search areas.

Excavation with backhoe by A.B.Kiedrowski, County Surveyor, yielded no evidence of the original corner or any remonumentation.

Set corner on line and proportional to original notes between adjacent section corners.



CERTIFIED CORRECT:

Dale C. Hagen
Registered Land Surveyor

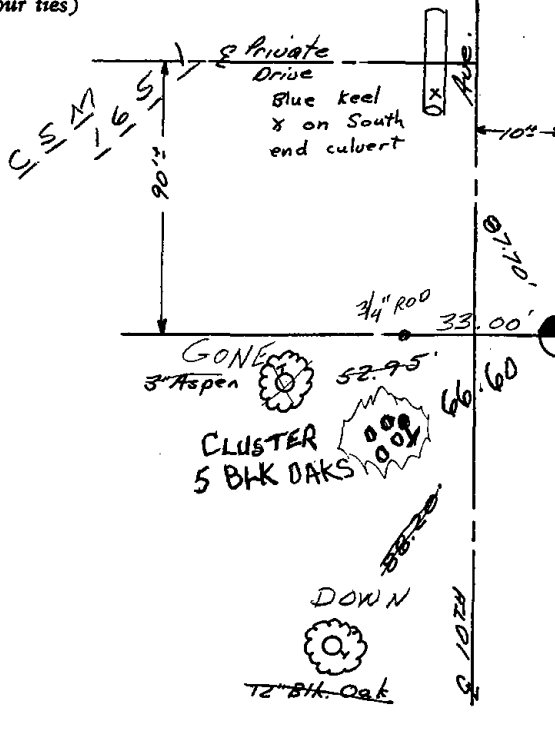
DATE: Sept. 2, 1976

OK 11-24-78 DA-SS
4-13-83 GR-SS 1 TIE DOWN - HIGH WATER
PROHIBITS NEW TIES
2-1-88 OK GR-SS
2-GONE, 1-NEW TIE 1-5-93 JG-BS
OK, 2-12-98 - JG

TIE SKETCH

OK, 1-24-03-JG
1-NEW, TOP BROKEN OFF MON. 11-14-07-56-35

(Show at least four ties)



Note: ties to nail and bottlecap

Remnants of old culvert 30' East

54' 6.5"
59' 6.5"
DEAD 5" Jack Pine
NAIL STILL GOOD "DT"
4" BLK OAK / 10T