

03 SECTION 19 TOWN 06 RANGE

ADAMS COUNTY

COUNTY CORNER NO: 18
 ROMPORTOL ID: 41906032000

PUBLIC LAND SURVEY MONUMENT RECORD

TYPE OF MONUMENT: HARRISON (BROKEN-TOP)
 ADAMS COUNTY COORDINATES, NAD 83 (2007)

N. 284938.384

E. 546676.661

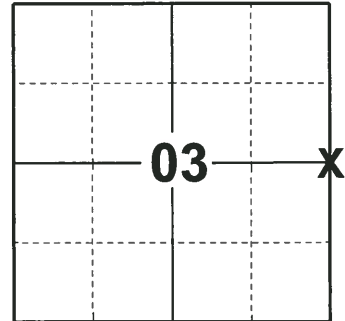
ELEVATION- _____ DATUM _____

FIELD WORK DATE: 11/27/2018

BASIS FOR MONUMENT LOCATION

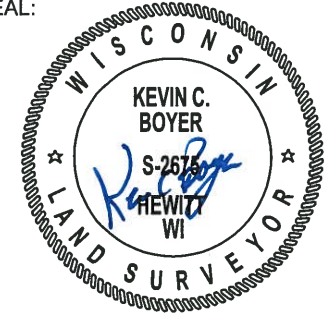
1979 - PLS 1478 EXCAVATION WITH A BACKHOE YIELDED NO EVIDENCE OF ANY PREVIOUS MONUMENTATION. CALCULATED THE CORNER LOCATION SINGLE PROPORTIONATE DISTANCE BETWEEN ADJACENT SECTION CORNERS AND ON THE CENTERLINE OF TOWN ROAD. SET A HARRISON MONUMENT AT THE CALCULATED LOCATION AND TIED OUT.

2018 - PLS 2675 FOUND A HARRISON MONUMENT WITH A BROKEN-TOP 8" BELOW THE ROAD SURFACE AND 1 PROPERTY IRON. FOUND NO EVIDENCE OF ANY OF THE EXISTING TIES OR WITNESSES. ACCEPTED THE HARRISON MONUMENT WITH A BROKEN-TOP AS THE BEST EVIDENCE OF THE CORNER LOCATION. SET 3 NEW TIES AND MEASURED TO THE TIES AND PROPERTY IRON.



LOCATION
 (INDICATE CORNER BY "X")

SEAL:



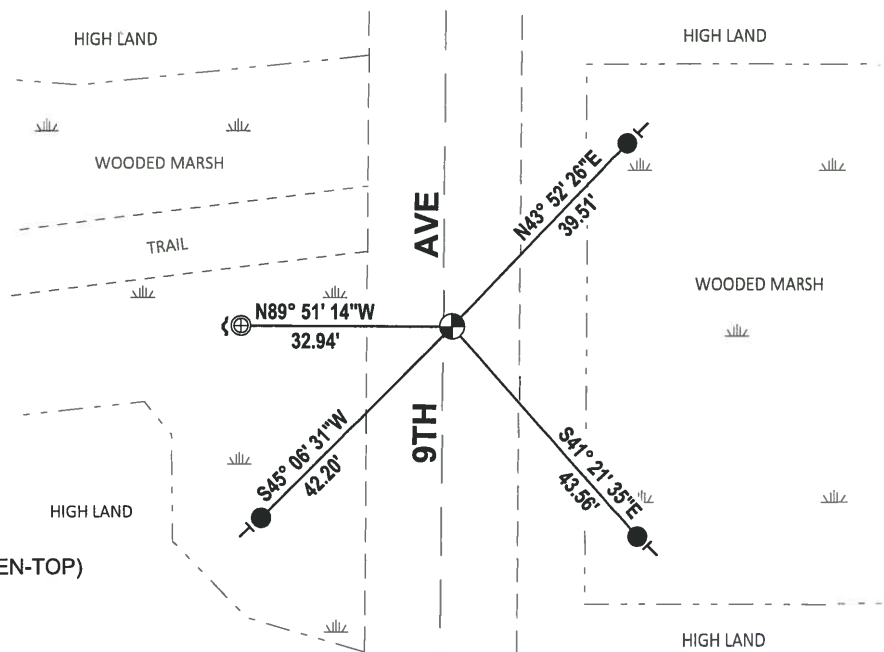
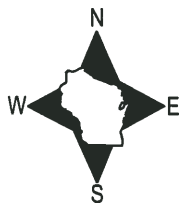
DATA SHOWN HERE ON THIS TIE SHEET IS CORRECT AND COMPLETE TO THE BEST OF MY KNOWLEDGE AND BELIEF.

PROFESSIONAL LAND SURVEYOR

DATE 1-18-19

- TIE SKETCH

NOTE: THE CORNER FALLS 1 1/2 EAST OF THE CENTERLINE OF 9TH AVE.

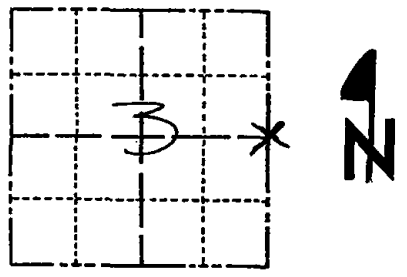


- SET 3/4" x 18" IRON REBAR, 1.50#/FT
- ⊕ FOUND 1" O.D. IRON PIPE
- ⊙ FOUND HARRISON MONUMENT (BROKEN-TOP)
- ~ STEEL FENCE POST
- VINYL "T" POST

Government Land Corner Certificate

ADAMS County
 TYPE OF MONUMENT: HARRISON
 STATE PLANE COORDINATES: N _____
 E _____
 ELEVATION — M.S.L. DATUM: _____
 THETA ANGLE: _____
 FIELD BOOK: 83 PAGE 139
 DRAWN BY: G. RHINEHART.

CORNER NO. 18
 SECTION 3
 TOWN 19
 RANGE 6



LOCATION
 (Indicated by 'X')

BASIS FOR MONUMENT LOCATION

Show info such as: History of corner, with reference to Vol. and pg., dates, surveyor; exact description of monument replaced; if location computed, by taped or EDM traverse; landowner remarks, etc. (Use reverse side if necessary)

Set at a location single proportionate ^{distance} between adjacent section corners and on the centerline of town road.
 Excavation with backhoe yielded no evidence of any previous monumentation.

SEAL:



DATA SHOWN HERE ON
 CERTIFIED CORRECT:

Gregory P. Rhinehart
 Registered Land Surveyor

DATE: 12/20/79

TIE SKETCH

Show at least four ties, also fence lines, roads, topo, size and type of witness trees' and if off road - best way to arrive at corner.

