

PUBLIC LAND SURVEY MONUMENT RECORD

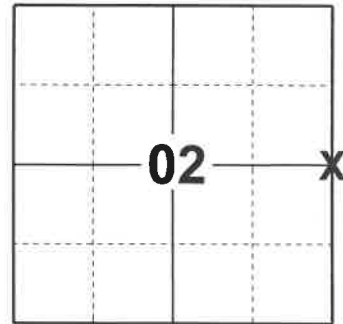
TYPE OF MONUMENT: HARRISON (BROKEN-TOP)
ADAMS COUNTY COORDINATES, NAD 83 (2007)

N. 284909.110

E. 551914.094

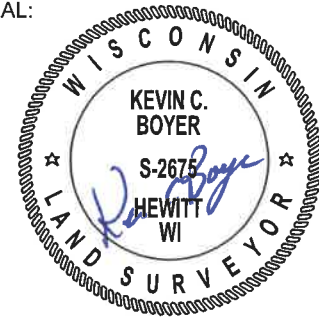
ELEVATION- - - - - DATUM - - - - -

FIELD WORK DATE: 11/26/2018



LOCATION
(INDICATE CORNER BY "X")

SEAL:



DATA SHOWN HERE ON THIS TIE SHEET IS CORRECT AND COMPLETE TO THE BEST OF MY KNOWLEDGE AND BELIEF.

PROFESSIONAL LAND SURVEYOR

DATE 1-18-19

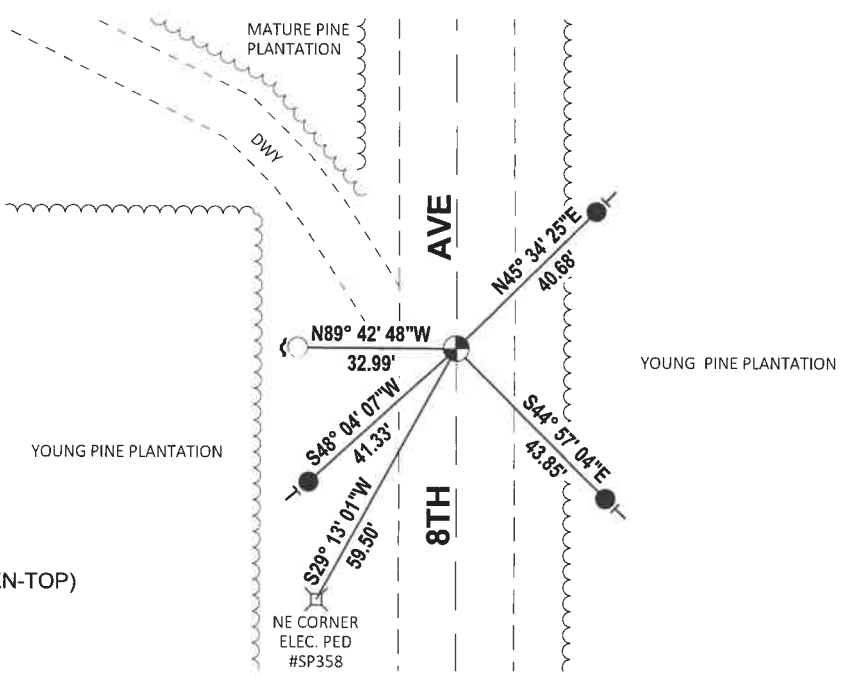
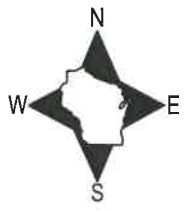
BASIS FOR MONUMENT LOCATION

1980 - PLS 878 EXCAVATED WITH A BACKHOE AND FOUND NOTHING. NO RESURVEYS ON RECORD. CALCULATED THE CORNER LOCATION PROPORTIONAL TO ORIGINAL NOTES. AND ON THE CENTERLINE OF THE ROAD. A STRAIGHT LINE BETWEEN CORNERS WOULD HAVE PUT THE CORNER 10' WEST OF THE CENTERLINE, AND THE WAY OCCUPATION WAS, PLS 878 FELT PUTTING THE CORNER ON A STRAIGHT LINE WOULD CONFLICT WITH POSSESSION LINES. SET A HARRISON MONUMENT AT THE CALCULATED LOCATION AND TIED OUT.

2018 - PLS 2675 FOUND A HARRISON MONUMENT WITH A BROKEN-TOP 8" BELOW THE ROAD SURFACE, 1 PROPERTY IRON AND 1 WITNESS. THE MONUMENT AGREES WITH THE EXISTING WITNESS. ACCEPTED THE HARRISON MONUMENT WITH A BROKEN-TOP AS THE CORNER LOCATION. SET 3 NEW TIES AND MEASURED TO THE TIES, PROPERTY IRON AND WITNESS.

TIE SKETCH

NOTE: THE CORNER FALLS ON THE CENTERLINE OF 8TH AVE.



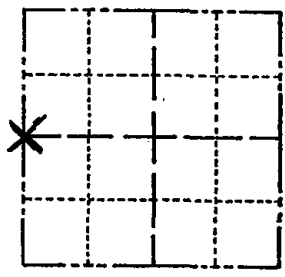
- SET 3/4" x 18" IRON REBAR, 1.50#/FT
- FOUND 3/4" IRON ROD
- ⊕ FOUND HARRISON MONUMENT (BROKEN-TOP)
- ┌ STEEL FENCE POST
- └ VINYL "T" POST

Government Land Corner Certificate

Adams County
 TYPE OF MONUMENT: Harrison Monument
 STATE PLANE COORDINATES: N _____
 E _____
 ELEVATION — M.S.L. DATUM: _____
 THETA ANGLE: _____
 FIELD BOOK: B3 6102 PAGE 65 (64)
 DRAWN BY: G. Rhinehart

TEMP
 NEW

CORNER NO. 19
 SECTION 1
 TOWN 19
 RANGE 6



LOCATION
 (Indicated by 'X')

BASIS FOR MONUMENT LOCATION

Show info such as: History of corner, with reference to Vol. and pg., dates, surveyor; exact description of monument replaced; if location computed, by taped or EDM traverse; landowner remarks, etc. (Use reverse side if necessary)

12' x 30'

Excavated area with backhoe. Found nothing. No resurveys of record. Set corner proportional to original notes, and on centerline of the road. A straight line between corners would have put it 10 feet west of the centerline, and the way occupation was, I felt putting the corner on a straight line would conflict with possession lines.

REPLACES ...
 ...

SEAL:



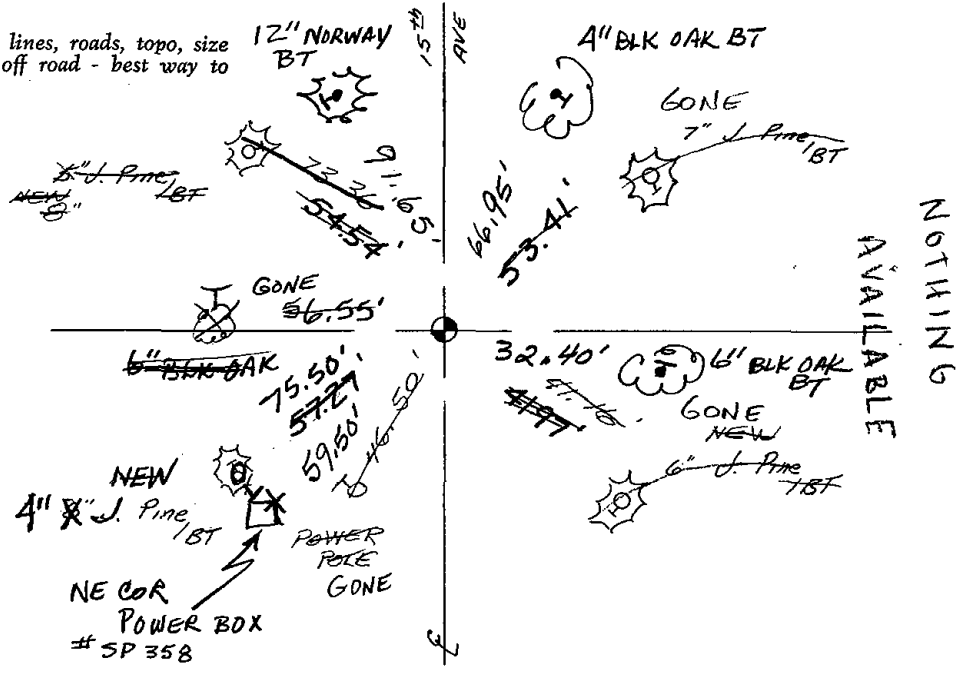
DATA SHOWN HERE ON
 CERTIFIED CORRECT:

Anthony B. Kiedrowski
 Registered Land Surveyor

DATE: 2/21/80

TIE SKETCH

Show at least four ties, also fence lines, roads, topo, size and type of witness trees and if off road - best way to arrive at corner.



NOTHING
 AVAILABLE

