

PUBLIC LAND SURVEY MONUMENT RECORD

TYPE OF MONUMENT: HARRISON
ADAMS COUNTY COORDINATES, NAD 83 (2007)

N. 282266.650

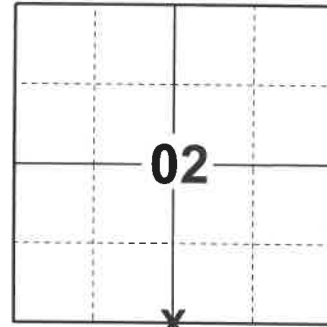
E. 549261.694

ELEVATION- - - - DATUM - - - -

FIELD WORK DATE: 11/26/2018

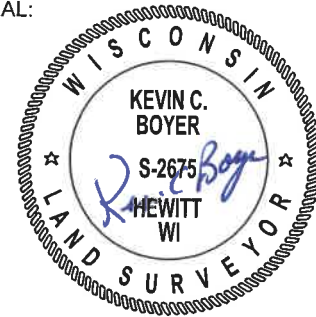
BASIS FOR MONUMENT LOCATION

1971 - PLS 981 FOUND A "RR" SPIKE. SET A HARRISON MONUMENT AND TIED OUT.
2018 - PLS 2675 FOUND A HARRISON MONUMENT IN THE ROAD SURFACE AND 1 WITNESS. THE MONUMENT AGREES WITH THE EXISTING WITNESS. ACCEPTED THE HARRISON MONUMENT AS THE CORNER LOCATION. SET 4 NEW TIES AND MEASURED TO THE TIES AND WITNESS.



LOCATION
(INDICATE CORNER BY "X")

SEAL:



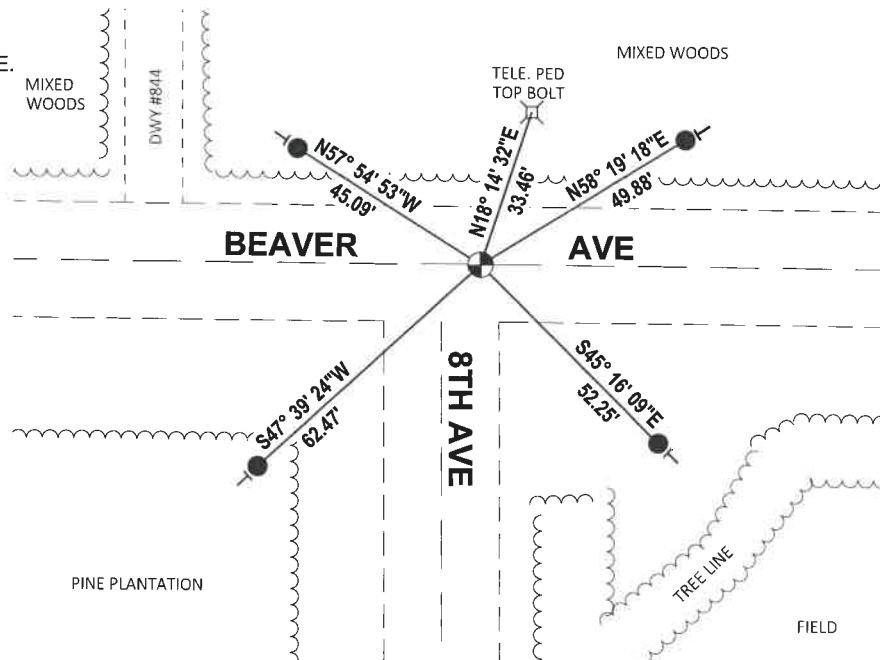
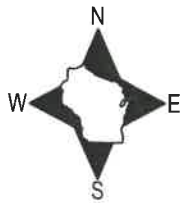
DATA SHOWN HERE ON THIS TIE SHEET IS CORRECT AND COMPLETE TO THE BEST OF MY KNOWLEDGE AND BELIEF.

PROFESSIONAL LAND SURVEYOR

DATE 1-18-19

- TIE SKETCH

NOTE: THE CORNER FALLS 8± EAST OF THE CENTERLINE OF 8TH AVE EXTENDED AND ON THE CENTERLINE OF BEAVER AVE.



- SET 3/4" x 18" IRON REBAR, 1.50#/FT
- ⊕ FOUND HARRISON MONUMENT
- VINYL "T" POST

ADAMS COUNTY

CORNER NO. 42

Survey Monument Record

SECTION 11

TYPE OF MONUMENT: 30" HARRISON

TOWN 19

STATE PLANE COORDINATES: N _____

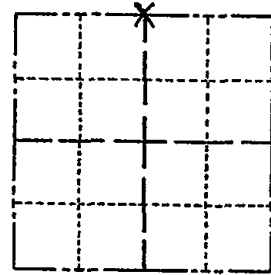
RANGE 6

E _____

ELEVATION - M.S.L. DATUM: _____

THETA ANGLE: _____

FIELD BOOK: 104 PAGE 73



LOCATION (Indicated by 'X')

SEAL:

BASIS FOR MONUMENT LOCATION

(Use reverse side if necessary)

Show info such as: History of corner, with reference to Vol. and pg, dates, surveyor; exact description of monument replaced; if location computed, by taped or EDM traverse; landowner remarks, etc.

Found "RR" spike and set monument

August 30, 1971

Sam T. Mullen R.L.S. S-981

- OK 11-24-78 DR. SS
- " 3-10-83 GR-SS
- " 2-1-88 GR-SS
- OK 1-5-93 BS-J6
- 1-GONE, 1-NEW, MON. OK, 2-12-98 - JG
- OK 1-24-03 - JG

CERTIFIED CORRECT:

Registered Land Surveyor

DATE: _____

TIE SKETCH 2-NEW TIES, MON. OK. 11-14-07 - JG-JS

(Show at least four ties)

