

02 SECTION 19 TOWN 06 RANGE

ADAMS COUNTY

COUNTY CORNER NO: 31
 ROMPORTOL ID: 41906020000

PUBLIC LAND SURVEY MONUMENT RECORD

TYPE OF MONUMENT: HARRISON
 ADAMS COUNTY COORDINATES, NAD 83 (2007)

N. 282270.812

E. 551880.170

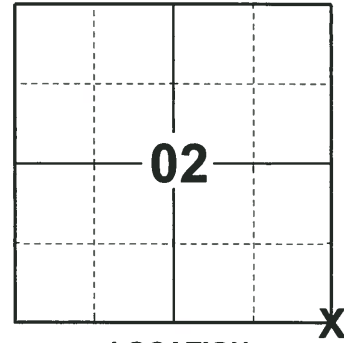
ELEVATION- _____ DATUM _____

FIELD WORK DATE: 11/26/2018

BASIS FOR MONUMENT LOCATION

1971 - PLS 981 FOUND A "RR" SPIKE AND IRON PIPE. SET A HARRISON MONUMENT AND TIED OUT.

2018 - PLS 2675 FOUND A HARRISON MONUMENT IN THE ROAD SURFACE AND 2 WITNESSES. THE MONUMENT AGREES WITH THE EXISTING WITNESSES. ACCEPTED THE HARRISON MONUMENT AS THE CORNER LOCATION. SET 4 NEW TIES AND MEASURED TO THE TIES AND WITNESSES.



LOCATION

(INDICATE CORNER BY "X")

SEAL:



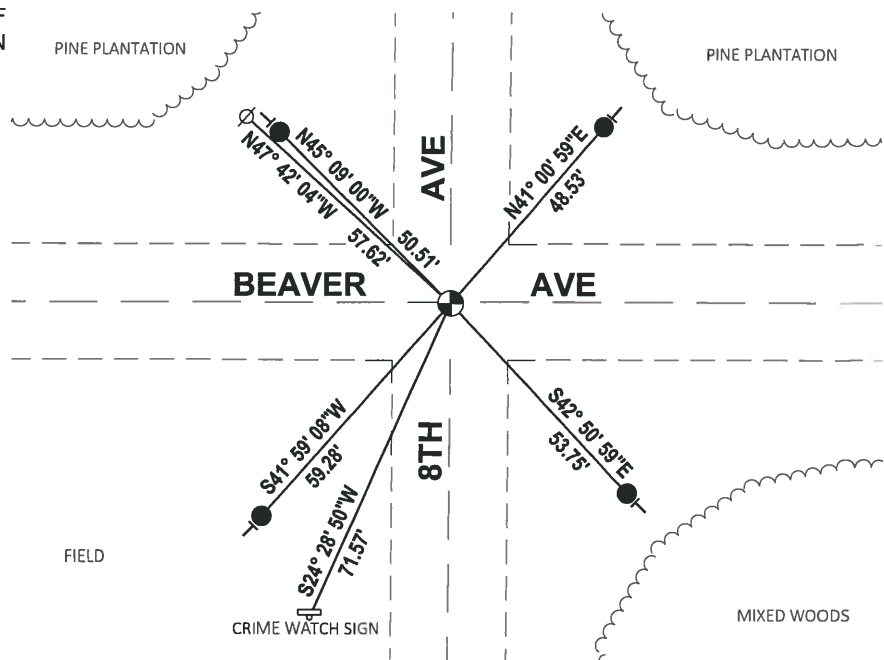
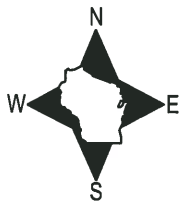
DATA SHOWN HERE ON THIS TIE SHEET IS CORRECT AND COMPLETE TO THE BEST OF MY KNOWLEDGE AND BELIEF.

PROFESSIONAL LAND SURVEYOR

DATE 1-18-19

- TIE SKETCH -

NOTE: THE CORNER FALLS 0.5'± SOUTH OF THE CENTERLINE OF BEAVER AVE AND ON THE CENTERLINE OF 8TH AVE.



- SET 3/4" x 18" IRON REBAR, 1.50#/FT
- ⊙ FOUND HARRISON MONUMENT
- ⊘ WITNESS POWER POLE
- ⊣ VINYL "T" POST

ADAMS COUNTY

Survey Monument Record

TYPE OF MONUMENT: 30" HARRISON

STATE PLANE COORDINATES: N _____

E _____

ELEVATION -- M.S.L. DATUM: _____

THETA ANGLE: _____

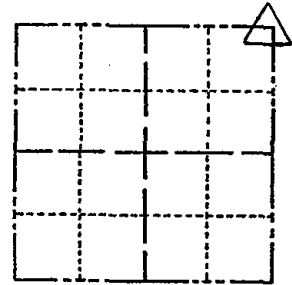
FIELD BOOK: 104 PAGE 77

CORNER NO. 46

SECTION 11

TOWN 19

RANGE 6



LOCATION (Indicated by 'X')

SEAL:

BASIS FOR MONUMENT LOCATION

(Use reverse side if necessary)

Show info such as: History of corner, with reference to Vol. and pg, dates, surveyor; exact description of monument replaced; if location computed, by taped or EDM traverse; landowner remarks, etc.

Found "RR" spike and iron pipe and set monument

August 30, 1971

Sam T. Mullen R.L.S. S-981

OK 11-24-78 DA-SS

" 3-10-83 GR-SS

" 2-1-88 GR-SS

OK 1-5-93 SB-BS

OK 2-12-98 -JG

1-GONE, 2-NEW, MON. OK 1-28-03-JG

CERTIFIED CORRECT:

Registered Land Surveyor

DATE: _____

TIE SKETCH 1-GONE, 1-NEW, MON. OK, 11-14-07 - JG-JS

(Show at least four ties)

