

09
SECTION

19
TOWN

06
RANGE

ADAMS COUNTY

COUNTY CORNER NO: 37

ROMPORTOL ID: 41906092000

PUBLIC LAND SURVEY MONUMENT RECORD

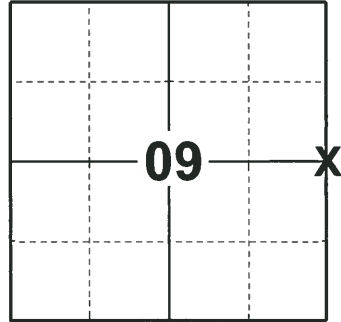
TYPE OF MONUMENT: HARRISON (BROKEN-TOP)
ADAMS COUNTY COORDINATES, NAD 83 (2007)

N. 279676.888

E. 541392.530

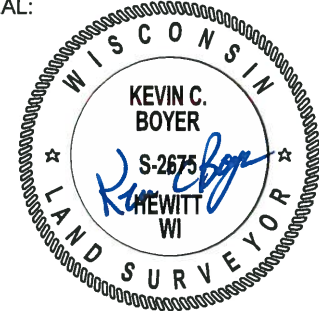
ELEVATION- DATUM

FIELD WORK DATE: 11/29/2018



LOCATION
(INDICATE CORNER BY "X")

SEAL:



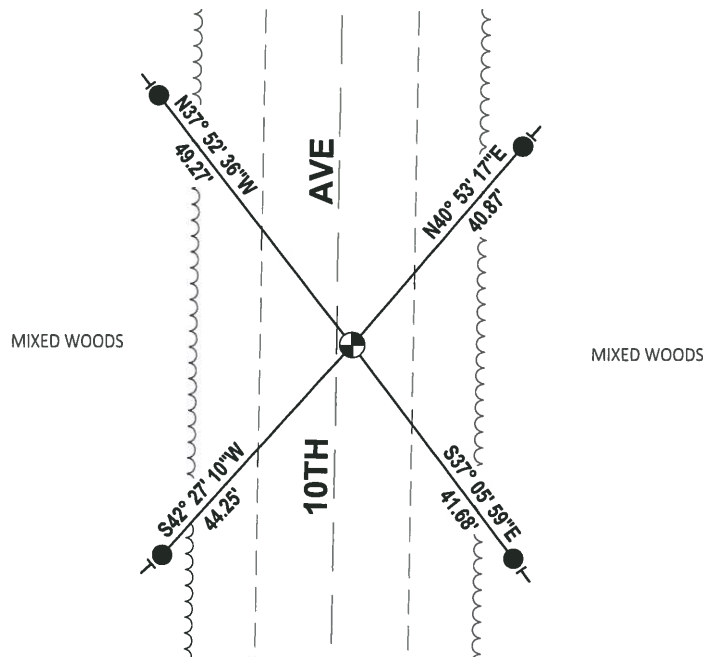
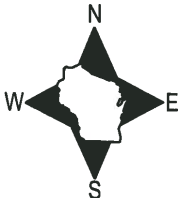
DATA SHOWN HERE ON THIS TIE SHEET IS CORRECT AND COMPLETE TO THE BEST OF MY KNOWLEDGE AND BELIEF.

PROFESSIONAL LAND SURVEYOR

DATE 1-18-19

TIE SKETCH

NOTE: THE CORNER FALLS 2'± EAST OF THE CENTERLINE OF 10TH AVE AND 75'± SOUTH OF THE CENTERLINE OF DWY #845.



- SET 3/4" x 18" IRON REBAR, 1.50#/FT
- ⊕ FOUND HARRISON MONUMENT (BROKEN-TOP)
- VINYL "T" POST

ADAMS COUNTY

Survey Monument Record

TYPE OF MONUMENT: HARRISON STANDARD

STATE PLANE COORDINATES: N _____

E _____

ELEVATION — M.S.L. DATUM: _____

THETA ANGLE: _____

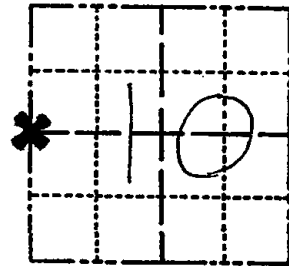
FIELD BOOK: 54 PAGE 13

CORNER NO. 37

SECTION 10

TOWN 19

RANGE 6



LOCATION
(Indicated by 'X')

SEAL:



BASIS FOR MONUMENT LOCATION

(Use reverse side if necessary)

Show info such as: History of corner, with reference to Vol. and pg, dates, surveyor; exact description of monument replaced; if location computed, by taped or EDM traverse; landowner remarks, etc.

Did not excavate . Could not determine just where to dig. Corner set half way between section corners, but not on line. There is a considerable P.I. at this point. No resurveys on record.

CERTIFIED CORRECT:

Anthony B. Kiedrowski
Registered Land Surveyor

DATE: 7/5/77

- OK 11-24-78 DA-SS
- " 3-25-83 GR-SS
- " 2-1-88 GR-SS
- " 1-5-93 JG-BB
- OK 2-12-98-JG
- OK 1-24-03-JG

TIE SKETCH

OK, 11-14-07- JG-JS

(Show at least four ties)

Ties are to nail and bottle cap.

