

11
SECTION

19
TOWN

06
RANGE

ADAMS COUNTY

COUNTY CORNER NO: 39

ROMPORTOL ID: 41906112000

PUBLIC LAND SURVEY MONUMENT RECORD

TYPE OF MONUMENT: HARRISON
ADAMS COUNTY COORDINATES, NAD 83 (2007)

N. 279658.685

E. 551890.082

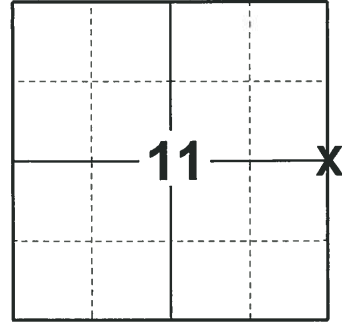
ELEVATION- _____ DATUM _____

FIELD WORK DATE: 11/29/2018

BASIS FOR MONUMENT LOCATION

1971 - PLS 981 FOUND A 1-1/4" IRON BAR. SET A HARRISON MONUMENT AND TIED OUT.

2018 - PLS 2675 FOUND A HARRISON MONUMENT 8" BELOW THE GROUND SURFACE AND 1 WITNESS TREE. THE MONUMENT AGREES WITH THE EXISTING WITNESS TREE. ACCEPTED THE HARRISON MONUMENT AS THE CORNER LOCATION. SET 4 NEW TIES AND MEASURED TO THE TIES AND WITNESS TREE.



LOCATION

(INDICATE CORNER BY "X")

SEAL:



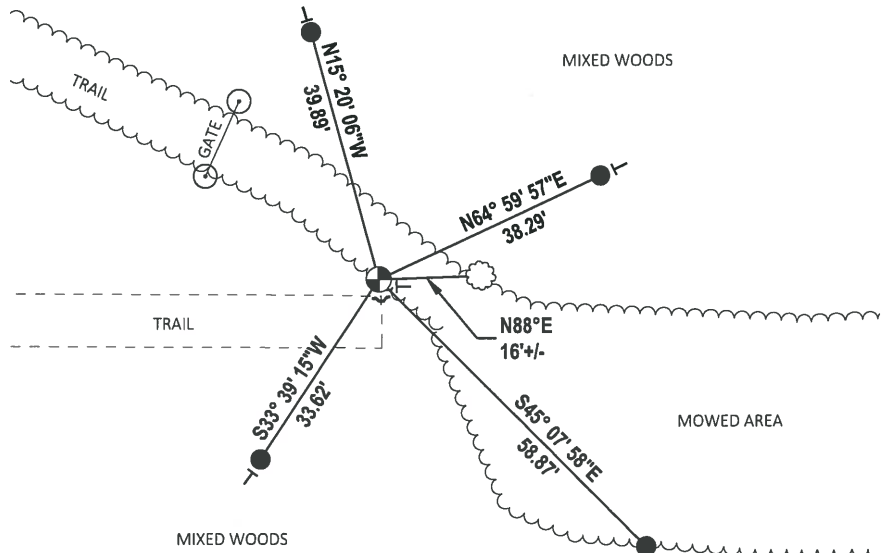
DATA SHOWN HERE ON THIS TIE SHEET IS CORRECT AND COMPLETE TO THE BEST OF MY KNOWLEDGE AND BELIEF.

PROFESSIONAL LAND SURVEYOR

DATE 1-18-19

TIE SKETCH

NOTE: THE CORNER FALLS 100'± EAST OF 8TH AVE.



- SET 3/4" x 18" IRON REBAR, 1.50#/FT
- ⊕ FOUND HARRISON MONUMENT
- ↙ STEEL FENCE POST
- ┆ VINYL "T" POST
- ⊙ WITNESS TREE

ADAMS COUNTY

Survey Monument Record

TYPE OF MONUMENT: 30" HARRISON

STATE PLANE COORDINATES: N _____

E _____

ELEVATION — M.S.L. DATUM: _____

THETA ANGLE: _____

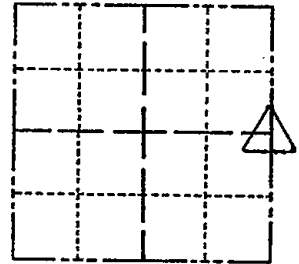
FIELD BOOK: 104 PAGE 78

CORNER NO. 47

SECTION 11

TOWN 19

RANGE 6



LOCATION (Indicated by 'X')

SEAL:

BASIS FOR MONUMENT LOCATION

(Use reverse side if necessary)

Show info such as: History of corner, with reference to Vol. and pg, dates, surveyor; exact description of monument replaced; if location computed, by taped or EDM traverse; landowner remarks, etc.

Found 1 1/4" iron bar and set monument

September 1, 1971

Sam T. Millen R.L.S. S-981

- REVISD 11-24-78 DA-SS
- 1 NEW 3-10-83 GR-SS
- 2-1-88 OK GR-SS
- 1-NEW TIE 1-5-93 JG-BS
- OK, 2-12-98-JG
- OK 5-20-98 SH-MC

CERTIFIED CORRECT:

Registered Land Surveyor

DATE: _____

TIE SKETCH 1-GONE, 5-LEFT, 1-24-03-JG

(Show at least four ties)

