

07
SECTION

19
TOWN

06
RANGE

ADAMS COUNTY

COUNTY CORNER NO: 43

ROMPORTOL ID: 41906070000

PUBLIC LAND SURVEY MONUMENT RECORD

TYPE OF MONUMENT: HARRISON
ADAMS COUNTY COORDINATES, NAD 83 (2007)

N. 276983.698

E. 530837.749

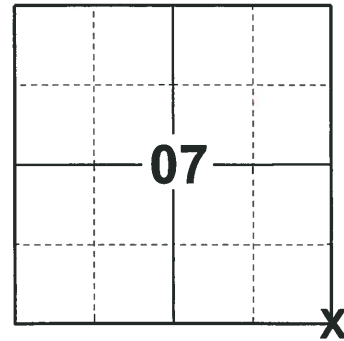
ELEVATION- _____ DATUM _____

FIELD WORK DATE: 12/03/2018

BASIS FOR MONUMENT LOCATION

1971 - PLS 981 FOUND NAIL AND SET HARRISON MONUMENT ON TOP OF STONE. TIED OUT CORNER.

2018 - PLS 2675 FOUND A HARRISON MONUMENT 2" BELOW THE ROAD SURFACE AND 1 WITNESS. THE MONUMENT AGREES WITH THE EXISTING WITNESS. ACCEPTED THE HARRISON MONUMENT AS THE CORNER LOCATION. SET 4 NEW TIES AND MEASURED TO THE TIES AND WITNESS.



LOCATION
(INDICATE CORNER BY "X")

SEAL:



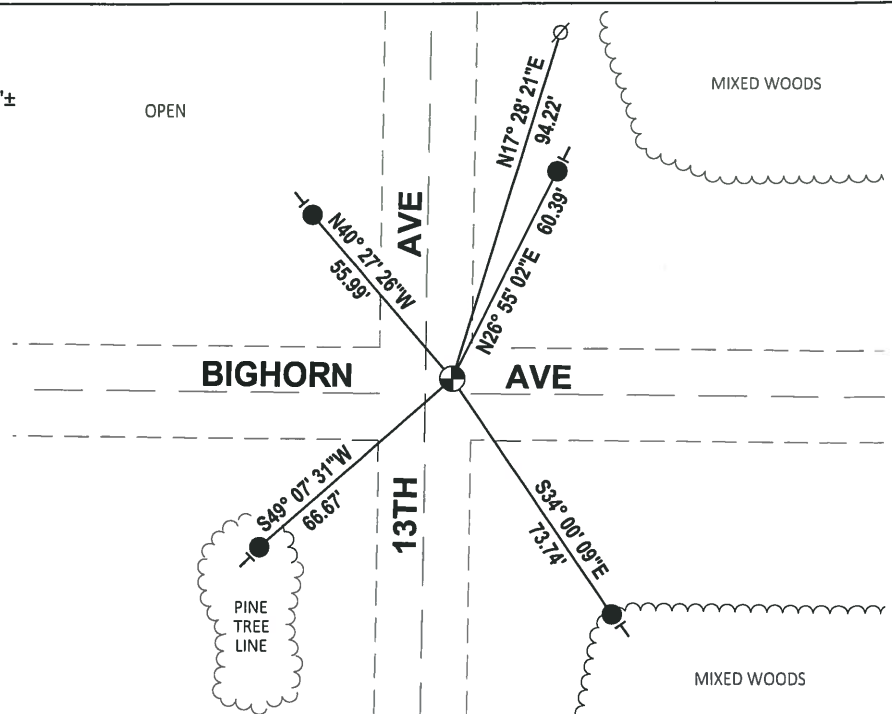
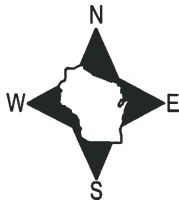
DATA SHOWN HERE ON THIS TIE SHEET IS CORRECT AND COMPLETE TO THE BEST OF MY KNOWLEDGE AND BELIEF.

PROFESSIONAL LAND SURVEYOR

DATE 1-18-19

TIE SKETCH

NOTE: THE CORNER FALLS 4'± NORTH OF THE CENTERLINE OF BIGHORN AVE AND 7'± EAST OF THE CENTERLINE OF 13TH AVE.



- SET 3/4" x 18" IRON REBAR, 1.50#/FT
- ⊕ FOUND HARRISON MONUMENT
- ∅ WITNESS POWER POLE
- VINYL "T" POST

ADAMS COUNTY

Survey Monument Record

TYPE OF MONUMENT: 10" HARRISON

STATE PLANE COORDINATES: N _____

E _____

ELEVATION — M.S.L. DATUM: _____

THETA ANGLE: _____

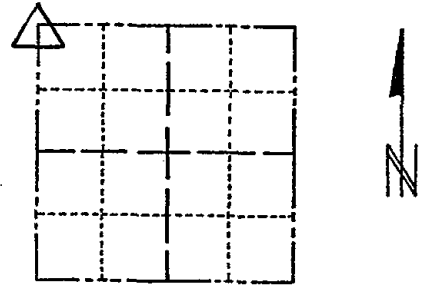
FIELD BOOK: 104 PAGE 98

CORNER NO. 69

SECTION 17

TOWN 19

RANGE 6



LOCATION
(Indicated by 'X')

SEAL:

BASIS FOR MONUMENT LOCATION

(Use reverse side if necessary)

Show info such as: History of corner, with reference to Vol. and pg, dates, surveyor; exact description of monument replaced; if location computed, by taped or EDM traverse; landowner remarks, etc.

Found nail and set monument on top of stone

November 22, 1971

Sam T. Mullen R.L.S. S-981

OK 11-27-78 RN-DA
 3-11-83 GR-SS 2 NEW TIES
 2-1-88 OK GR-SS
 OK 1-4-93 JG-BS
 1-GONE, 4-LEFT, 2-11-98-JG
 1-GONE, 2-NEW, MON. OK, 12-30-02-JG

CERTIFIED CORRECT:

Registered Land Surveyor

DATE: _____

TIE SKETCH

(Show at least four ties)

