

08  
SECTION

19  
TOWN

06  
RANGE

# ADAMS COUNTY

COUNTY CORNER NO: 44

ROMPORTOL ID: 41906080020

## PUBLIC LAND SURVEY MONUMENT RECORD

TYPE OF MONUMENT: SURVEY NAIL  
ADAMS COUNTY COORDINATES, NAD 83 (2007)

N. 277002.284

E. 533463.454

ELEVATION-        DATUM       

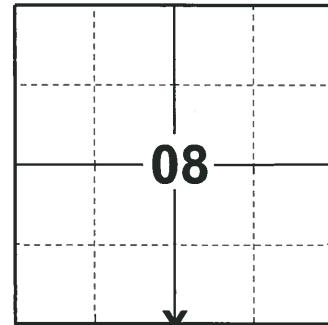
FIELD WORK DATE: 12/03/2018

### BASIS FOR MONUMENT LOCATION

1971 - PLS 981 FOUND PK NAIL AND SET HARRISON MONUMENT. TIED OUT CORNER.

2008 - PLS 1452 FOUND "PK" NAIL ON 9-8-2008, PRIOR TO 2008 RESURFACING PROJECT. SET NEW REFERENCE MONUMENTS (4" ALUMINUM DISKS SET IN CONCRETE) ON 10-2-2008. RE-SET SECTION CORNER ON 11-3-2008 WITH A BERNTSEN NAIL AND MEASURED TIES.

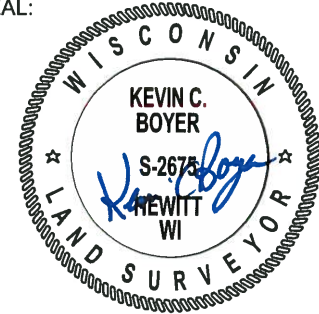
2018 - PLS 2675 FOUND A SURVEY NAIL IN THE ROAD SURFACE AND 4 TIES. REMOVED THE SURVEY NAIL AND FOUND NO OTHER EVIDENCE OF ANY ADDITIONAL MONUMENTATION BELOW. THE MONUMENT LOCATION AGREES WITH THE EXISTING TIES. ACCEPTED THE SURVEY NAIL LOCATION AS THE CORNER LOCATION. RE-SET SURVEY NAIL AND RE-MEASURED TO THE EXISTING TIES.



**LOCATION**

(INDICATE CORNER BY "X")

SEAL:



DATA SHOWN HERE ON THIS TIE SHEET IS CORRECT AND COMPLETE TO THE BEST OF MY KNOWLEDGE AND BELIEF.

PROFESSIONAL LAND SURVEYOR

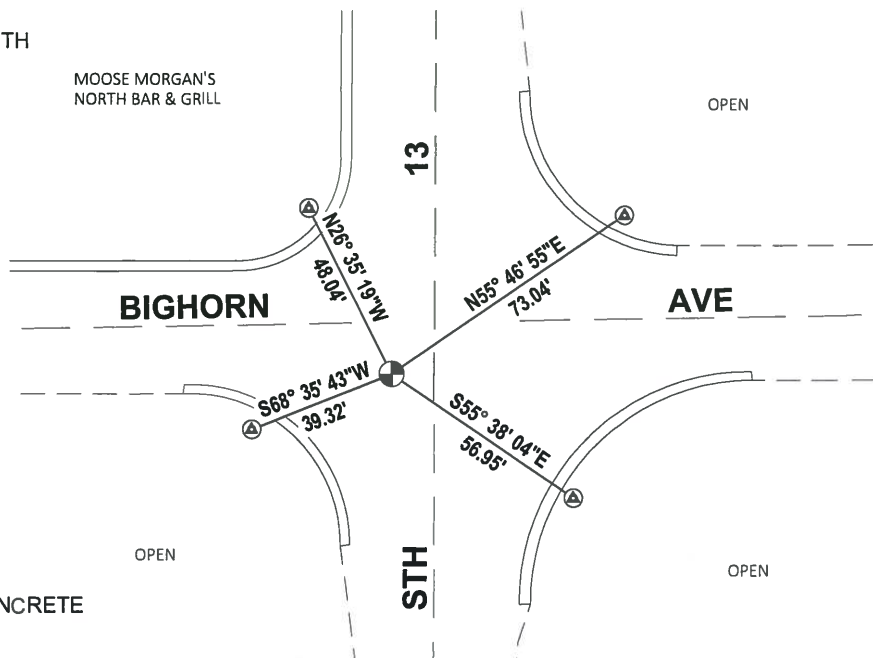
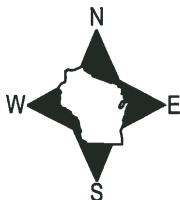
DATE 1-18-19

### TIE SKETCH

NOTE: THE CORNER FALLS 11'± WEST OF THE CENTERLINE OF STH 13 AND 13'± SOUTH OF THE CENTERLINE OF BIGHORN AVE.

MOOSE MORGAN'S  
NORTH BAR & GRILL

OPEN



⊕ FOUND WISDOT ALUMINUM CAP IN CONCRETE

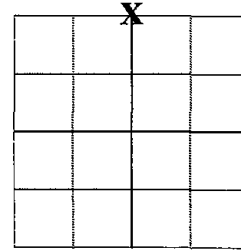
● FOUND SURVEY NAIL

# ADAMS COUNTY

## Survey Monument Record

TYPE OF MONUMENT: Berntsen Nail  
 STATE PLANE COORDINATES: N \_\_\_\_\_  
 E \_\_\_\_\_  
 ELEVATION — M.S.L. DATUM: \_\_\_\_\_  
 THETA ANGLE: \_\_\_\_\_  
 FIELD BOOK: \_\_\_\_\_ PAGE \_\_\_\_\_  
 DRAWN BY: D. Christie

CORNER NO. 44  
 SECTION 17  
 TOWN 19 N  
 RANGE 6 E



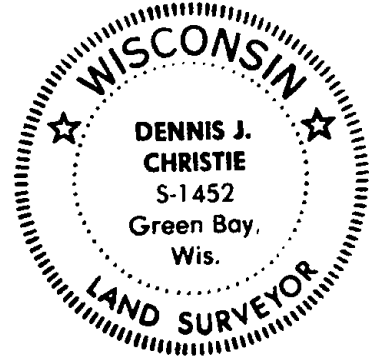
LOCATION  
(Indicated by 'X')

### BASIS FOR MONUMENT LOCATION

(Use reverse side if necessary)

Show info such as: History of corner, with reference to Vol. and pg. dates, surveyor; exact description of monument replaced; if location computed, by taped or EDM traverse; landowner remarks, etc.

SEAL:



Found "PK" nail on 9-8-2008, prior to 2008 Resurfacing Project. Set new reference monuments (4" Alum. Disks set in concrete) on 10-2-2008. Re-set section corner on 11-3-2008 and measured Ties.

*SEE SAM T. MULLEN TIE SHEET 11-19-71*

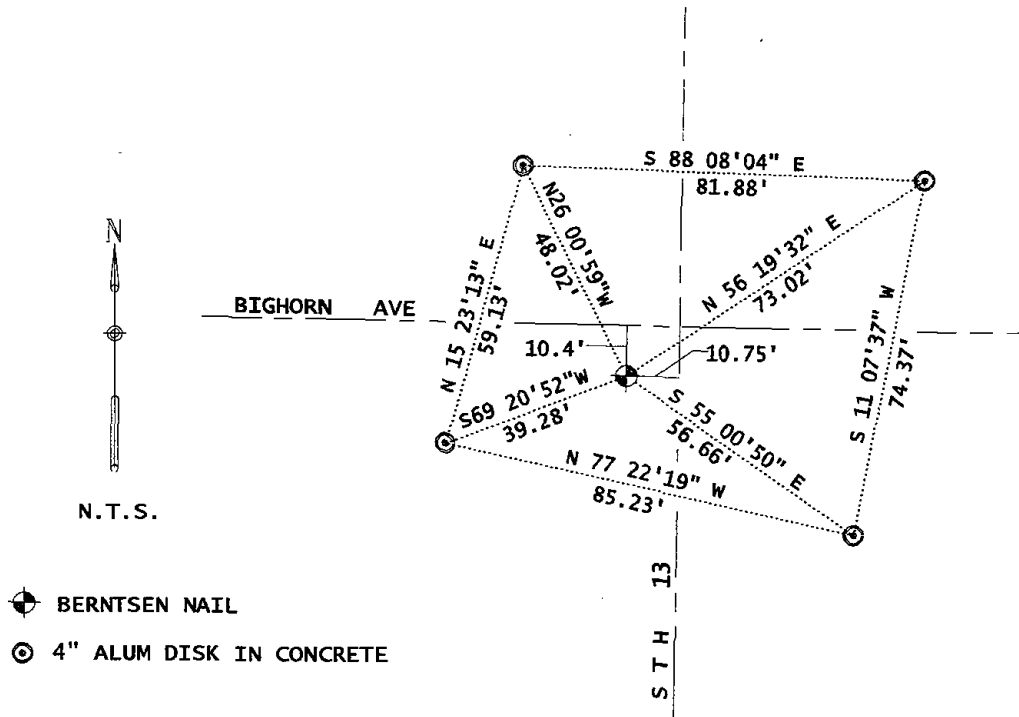
CERTIFIED CORRECT:

*Dennis J. Christie*  
 Registered Land Surveyor

Date: 12-12-2008

### TIE SKETCH

(Show at least four ties)



# ADAMS COUNTY

CORNER NO. 70

## Survey Monument Record

SECTION 17

TYPE OF MONUMENT: 30" HARRISON (P.K. OVER HARRISON-1989)

TOWN 19

STATE PLANE COORDINATES: N \_\_\_\_\_

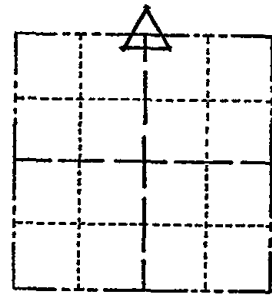
RANGE 6

E \_\_\_\_\_

ELEVATION — M.S.L. DATUM: \_\_\_\_\_

THETA ANGLE: \_\_\_\_\_

FIELD BOOK: 104 PAGE 99



LOCATION  
(Indicated by 'X')

SEAL:

### BASIS FOR MONUMENT LOCATION

(Use reverse side if necessary)

Show info such as: History of corner, with reference to Vol. and pg, dates, surveyor; exact description of monument replaced; if location computed, by taped or EDM traverse; landowner remarks, etc.

Found PK nail and set monument

SEE UPDATE 12-12-08  
DENNIS CHRISTIE

November 18, 1971

Sam T. Mullen R.L.S. S-981

3-25-83 GR-55 3 NEW TICS

2-1-88 GR-55

1-GONE 1-4-93 JG-B5

1-GONE, 2-NEW, 2/24/98 JG-55

OK, 5-19-03 JG-55

OK, 11-14-07-JG-55

CERTIFIED CORRECT:

Registered Land Surveyor

DATE: \_\_\_\_\_

NORTHEAST CORNER  
OF TAVERN 1983  
STEP AT  
TOP

### TIE SKETCH

(Show at least four ties)

