

09 SECTION 19 TOWN 06 RANGE

ADAMS COUNTY

COUNTY CORNER NO: 46
ROMPORTOL ID: 41906090020

PUBLIC LAND SURVEY MONUMENT RECORD

TYPE OF MONUMENT: HARRISON
ADAMS COUNTY COORDINATES, NAD 83 (2007)

N. 277034.302

E. 538729.822

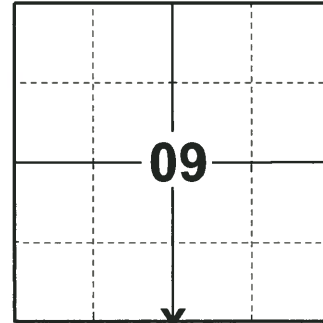
ELEVATION- DATUM

FIELD WORK DATE: 12/03/2018

BASIS FOR MONUMENT LOCATION

1977 - PLS 878 DID NOT EXCAVATE DUE TO NEW BLACKTOP AND NO RESURVEYS ON RECORD. CALCULATED THE CORNER LOCATION ON LINE AND EQUIDISTANT BETWEEN SECTION CORNERS. THIS MATCHED POSSESSION QUITE WELL. SET A HARRISON MONUMENT AT THE CALCULATED LOCATION AND TIED OUT.

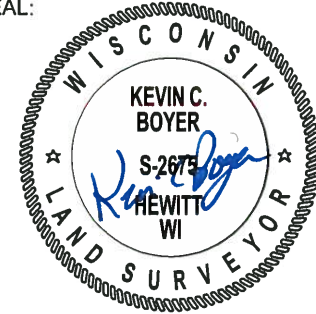
2018 - PLS 2675 FOUND A HARRISON MONUMENT 2" BELOW THE ROAD SURFACE AND 1 TIE. THE MONUMENT AGREES WITH THE EXISTING TIE. ACCEPTED THE HARRISON MONUMENT AS THE CORNER LOCATION. SET 3 NEW TIES AND MEASURED TO THE TIES.



LOCATION

(INDICATE CORNER BY "X")

SEAL:



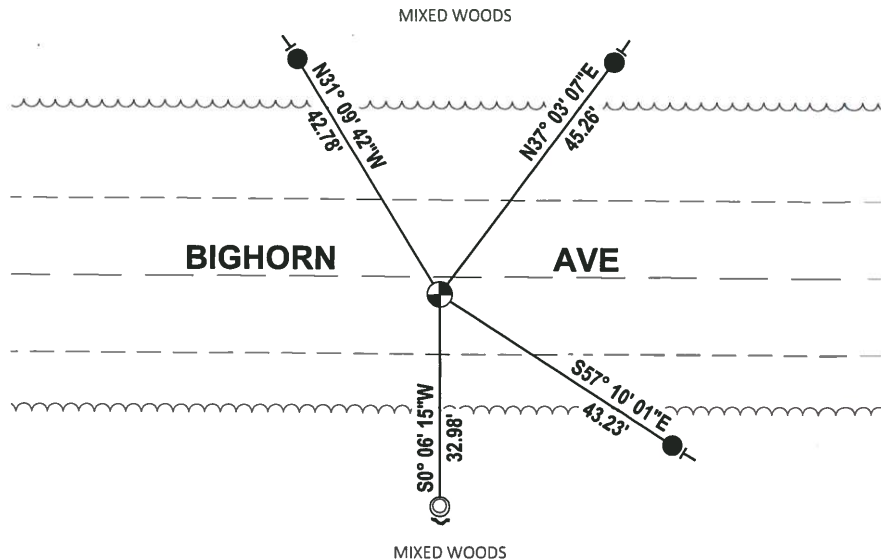
DATA SHOWN HERE ON THIS TIE SHEET IS CORRECT AND COMPLETE TO THE BEST OF MY KNOWLEDGE AND BELIEF.

PROFESSIONAL LAND SURVEYOR

DATE 1-18-19

TIE SKETCH

NOTE: THE CORNER FALLS 3'± SOUTH OF THE CENTERLINE OF BIGHORN AVE.



- SET 3/4" x 18" IRON REBAR, 1.50#/FT
- FOUND 1-1/4" O.D. IRON PIPE
- ⊙ FOUND HARRISON MONUMENT
- ↘ STEEL FENCE POST
- VINYL "T" POST

ADAMS COUNTY

Survey Monument Record

TYPE OF MONUMENT: HARRISON STANDARD

STATE PLANE COORDINATES: N _____

E _____

ELEVATION — M.S.L. DATUM: _____

THETA ANGLE: _____

FIELD BOOK: 54 PAGE 14

CORNER NO. 46
 SECTION 16
 TOWN 19
 RANGE 6



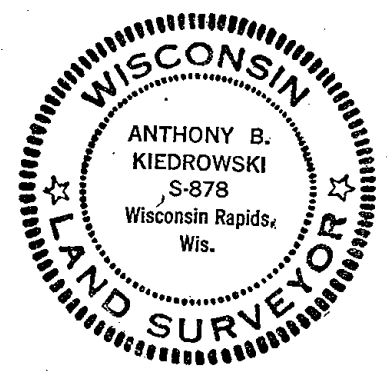
LOCATION
(Indicated by 'X')

BASIS FOR MONUMENT LOCATION

(Use reverse side if necessary)

Show info such as: History of corner, with reference to Vol. and pg, dates, surveyor; exact description of monument replaced; if location computed, by taped or EDM traverse; landowner remarks, etc.

SEAL:



Did not excavate due to new blacktop and no resurveys on record. Set corner on line equidistant between section corners. This matched possession quite well.

- OK 11-24-78 DA-SS
- 3-25-83 GR-SS
- 2-1-88 GR-SS
- OK 1-4-93 JG-BB
- 1-NEW, MON. OK, 2-13-98 - JG
- 1-NEW, MON. OK 1-6-08 - JG

CERTIFIED CORRECT:

Anthony B. Kiedrowski
 Registered Land Surveyor

DATE: 11/5/11

TIE SKETCH

2-12-08, OK, GPL

(Show at least four ties)

Ties are to nail and bottle cap.

