

11  
SECTION

19  
TOWN

06  
RANGE

# ADAMS COUNTY

COUNTY CORNER NO: 50

ROMPORTOL ID: 41906110020

## PUBLIC LAND SURVEY MONUMENT RECORD

TYPE OF MONUMENT: HARRISON  
ADAMS COUNTY COORDINATES, NAD 83 (2007)

N. 277012.389

E. 549237.309

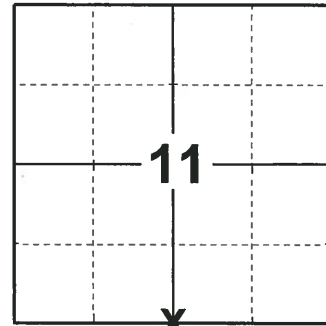
ELEVATION-          DATUM         

FIELD WORK DATE: 11/28/2018

### BASIS FOR MONUMENT LOCATION

1971 - PLS 981 FOUND SPIKE. SET HARRISON MONUMENT AND TIED OUT.

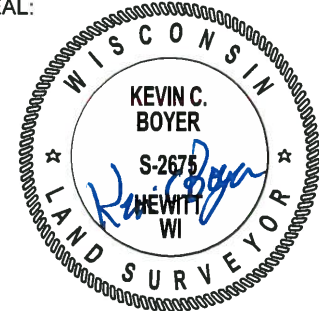
2018 - PLS 2675 FOUND A HARRISON MONUMENT 4" BELOW THE ROAD SURFACE, 1 PROPERTY IRON AND 2 WITNESSES. THE MONUMENT AGREES WITH THE EXISTING WITNESSES. ACCEPTED THE HARRISON MONUMENT AS THE CORNER LOCATION. SET 3 NEW TIES AND MEASURED TO THE TIES, PROPERTY IRON AND WITNESSES.



**LOCATION**

(INDICATE CORNER BY "X")

SEAL:



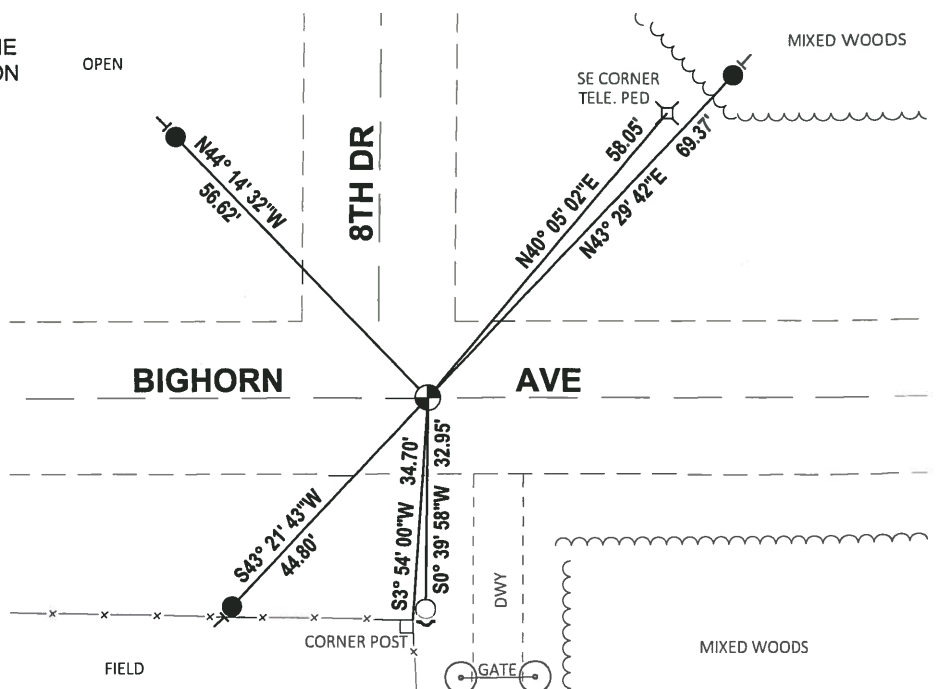
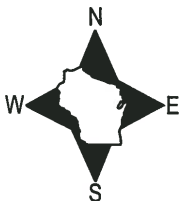
DATA SHOWN HERE ON THIS TIE SHEET IS CORRECT AND COMPLETE TO THE BEST OF MY KNOWLEDGE AND BELIEF.

PROFESSIONAL LAND SURVEYOR

DATE 1-18-19

### TIE SKETCH

NOTE: THE CORNER FALLS 8'± EAST OF THE CENTERLINE OF 8TH DR EXTENDED AND ON THE CENTERLINE OF BIGHORN AVE.



- SET 3/4" x 18" IRON REBAR, 1.50#/FT
- FOUND 3/4" IRON ROD
- ⊕ FOUND HARRISON MONUMENT
- ↘ STEEL FENCE POST
- VINYL "T" POST

ADAMS COUNTY

CORNER NO. 43

Survey Monument Record

SECTION 11

TYPE OF MONUMENT: 30" HARRISON

TOWN 19

STATE PLANE COORDINATES: N \_\_\_\_\_

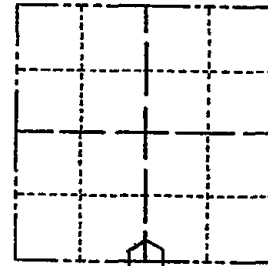
RANGE 6

E \_\_\_\_\_

ELEVATION — M.S.L. DATUM: \_\_\_\_\_

THETA ANGLE: \_\_\_\_\_

FIELD BOOK: 104 PAGE 74



LOCATION  
(Indicated by 'X')

SEAL:

BASIS FOR MONUMENT LOCATION

(Use reverse side if necessary)

Show info such as: History of corner, with reference to Vol. and pg, dates, surveyor; exact description of monument replaced; if location computed, by taped or EDM traverse; landowner remarks, etc.

Found spike and set monument

August 30, 1971

Sam T. Mullen R.L.S. S-981

RETIED 11-24-78 DA-SS  
3-10-83 GR-SS OK  
2-GONE, 2-NEW TIES 1-5-93 JG-BS  
OK, 2-13-98  
1-GONE 1-NEW 1-24-03 JG  
OK, 11-14-87 - JG-JS

CERTIFIED CORRECT:

Registered Land Surveyor

DATE: \_\_\_\_\_

TIE SKETCH

(Show at least four ties)

