

13 SECTION 19 TOWN 05 RANGE

ADAMS COUNTY

COUNTY CORNER NO: 60

ROMPORTOL ID: 41905132000

PUBLIC LAND SURVEY MONUMENT RECORD

TYPE OF MONUMENT: HARRISON (BROKEN-TOP)
 ADAMS COUNTY COORDINATES, NAD 83 (2007)

N. 274312.993

E. 525510.848

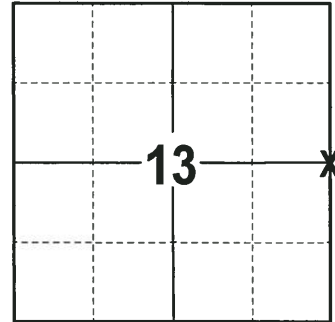
ELEVATION- DATUM

FIELD WORK DATE: 01/17/2018

BASIS FOR MONUMENT LOCATION

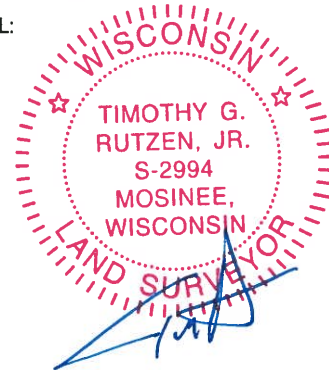
1973 - PLS 878 CALCULATED LOCATION BY RETRACEMENT OF A PERRY-CARRINGTON SURVEY. SET A 30" HARRISON MONUMENT AT THE CALCULATED LOCATION AND TIED OUT.

2018 - PLS 2994 FOUND A HARRISON MONUMENT WITH A BROKEN-TOP 10" BELOW THE ROAD SURFACE AND 2 TIES. THE MONUMENT AGREES WITH THE EXISTING TIES. ACCEPTED THE HARRISON MONUMENT WITH A BROKEN-TOP AS THE CORNER LOCATION. SET 2 NEW TIES AND MEASURED TO THE TIES.



LOCATION
 (INDICATE CORNER BY "X")

SEAL:

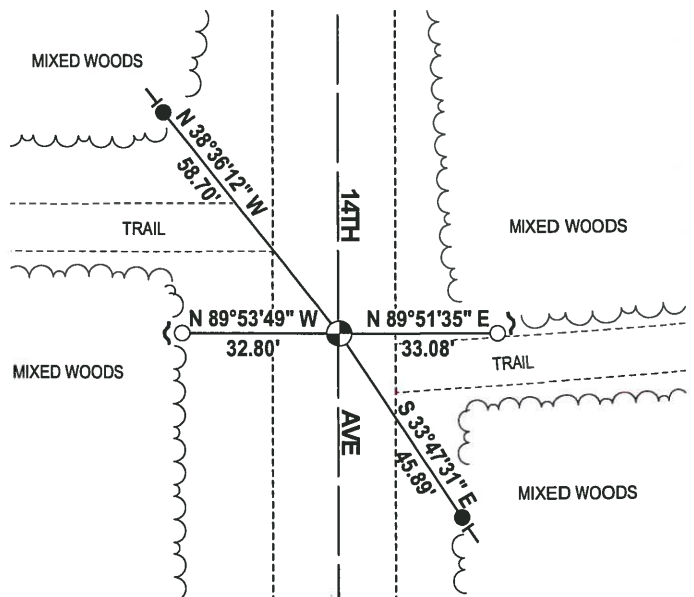
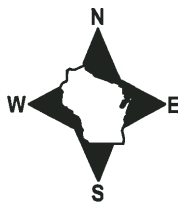


DATA SHOWN HERE ON THIS TIE SHEET IS CORRECT AND COMPLETE TO THE BEST OF MY KNOWLEDGE AND BELIEF.

PROFESSIONAL LAND SURVEYOR

DATE 3-1-18

- TIE SKETCH



- 3/4" x 18" IRON REBAR SET, 1.50#/FT
- 2-3/8" O.D. IRON PIPE FOUND
- ⊕ HARRISON (BROKEN-TOP) FOUND
- ~ STEEL FENCE POST
- | VINYL "T" POST

ADAMS COUNTY

Survey Monument Record

TYPE OF MONUMENT: 30" HARRISON

STATE PLANE COORDINATES: N _____
E _____

ELEVATION — M.S.L. DATUM: _____

THETA ANGLE: _____

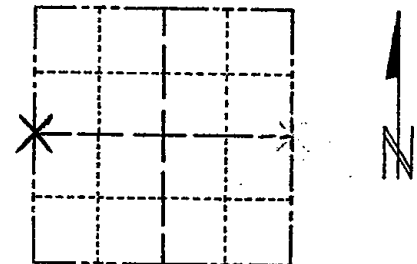
FIELD BOOK: 108 PAGE 96

CORNER NO. 311

SECTION 18

TOWN 19

RANGE 6



LOCATION
(Indicated by 'X')

SEAL:

BASIS FOR MONUMENT LOCATION

(Use reverse side if necessary)

Show info such as: History of corner, with reference to Vol. and pg, dates, surveyor; exact description of monument replaced; if location computed, by taped or EDM traverse; landowner remarks, etc.

Set by retracement of Perry-Carrinton survey.



- OK 11-27-78 RN-DA
- 3-11-83 GR-SS 2 NEW TIES
- 1-GONE 1-4-93 JG-BS
- OK, 2-11-98-JG
- OK, 12-30-02-JG
- OK, 12-21-07-JG-SS

CERTIFIED CORRECT:

Anthony B. Kiedrowski
Registered Land Surveyor

DATE: 9-18-73

TIE SKETCH

(Show at least four ties)

